

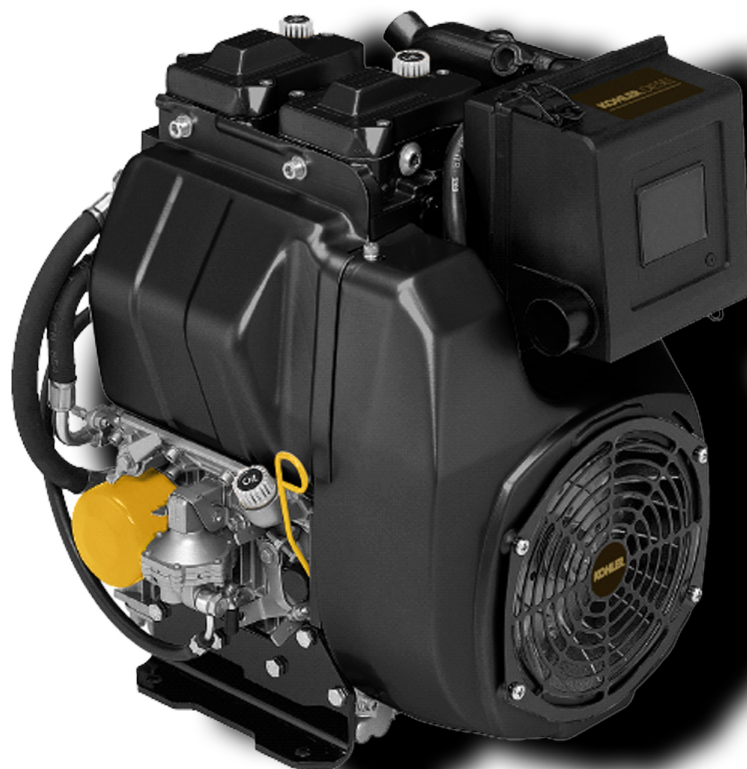
---

# ED3B9371

---

## Spare Parts Catalogue

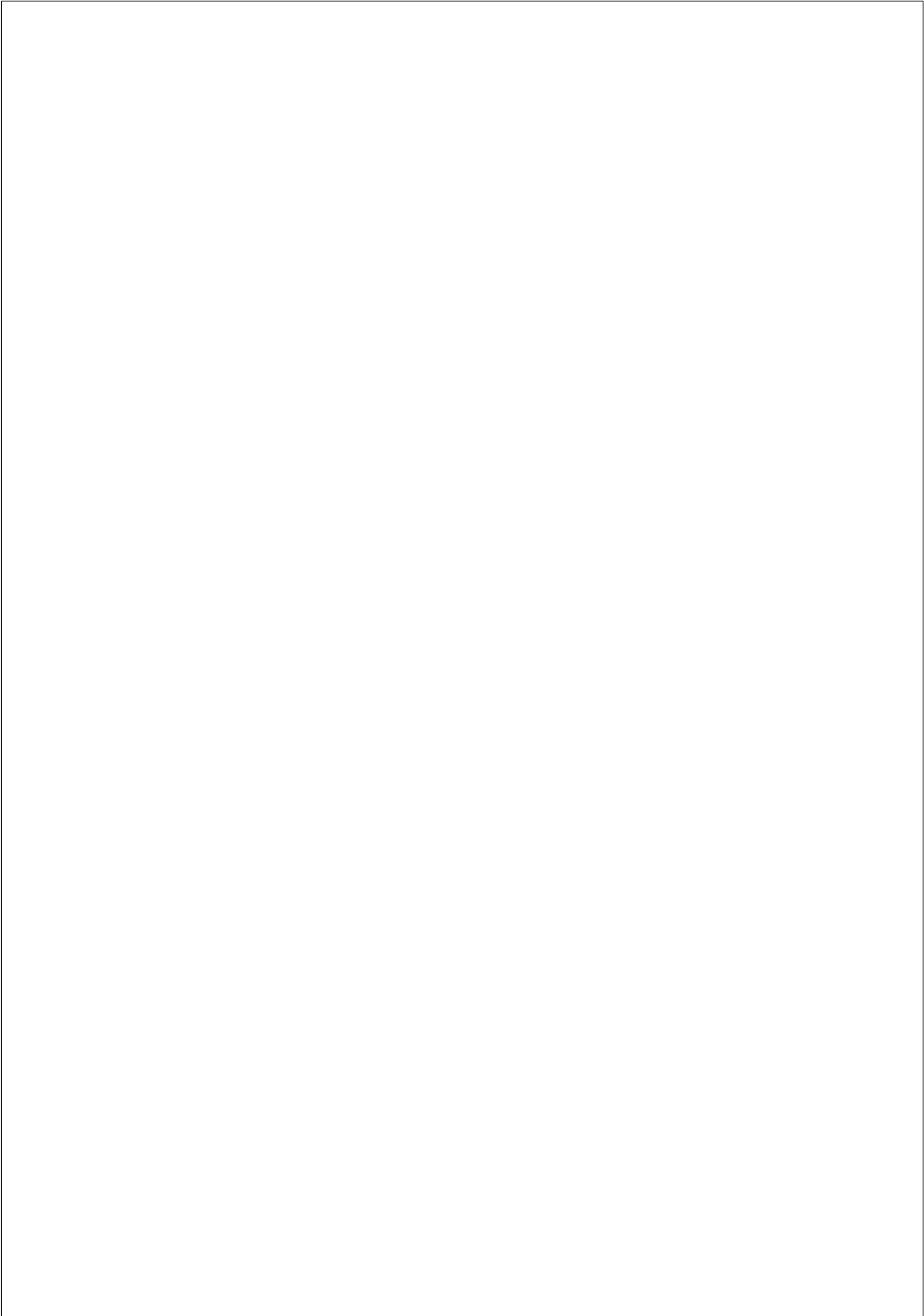
---



## 25LD425/2

**Update Date 18/10/2016**





## Tavola ricambi

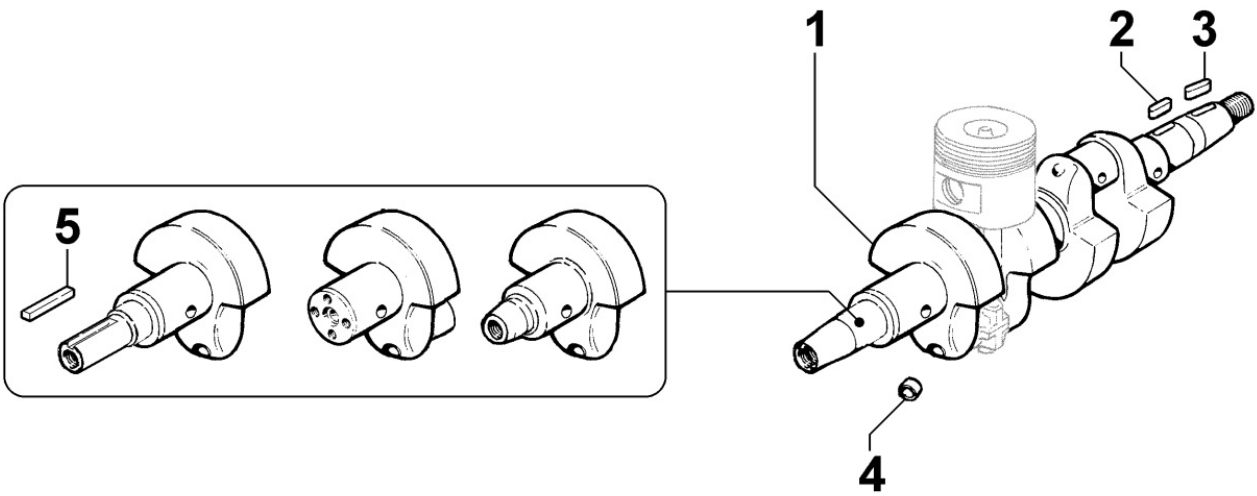
Index	Description
8010250320	CRANKSHAFT
8011250150	PISTON / CONNECTING ROD
8012250420	FLYWHEEL
8020250230	CRANKCASE
8021251310	CYLINDER HEAD
8022250010	HEAD COVER
8023250010	FLYWHEEL SIDE SUPPORT
8024250010	CRANKCASE COVER
8025250120	ENGINE MOUNTS
8026250020	CRANKSHAFT CENTRAL SUPPORT
8030250030	INJECTION SYSTEM
8035250030	CAMSHAFT
8038250010	TIMING GEAR
8040250010	OIL PUMP
8041250010	OIL PAN
8042250100	OIL FILTER
8043250010	OIL DIPSTICK
8044250010	OIL PRESSURE VALVE
8045250020	BREATHER SYSTEM
8050250010	SPEED GOVERNOR
8051250090	CONTROLS
8061250200	FUEL FILTER
8062250180	FUEL FEED PUMP
8063250050	FUEL TANK
8064250290	FUEL PIPING
8070250290	AIR SHROUD
8072250030	COOLING PLATES
8078250080	OIL RADIATOR / OIL COOLER
8080250100	AIR INLET MANIFOLD / AIR FILTER
8081250260	AIR CLEANER
8085250050	EXHAUST GAS MANIFOLD
8087250020	EXHAUST GAS ACCESSORIES
8101250040	STARTING MOTOR
8102250020	OIL PRESSURE SWITCH
8110250040	STARTING
8130250240	HYDRAULIC PUMP ADAPTER ON 1st PTO



Tavola ricambi

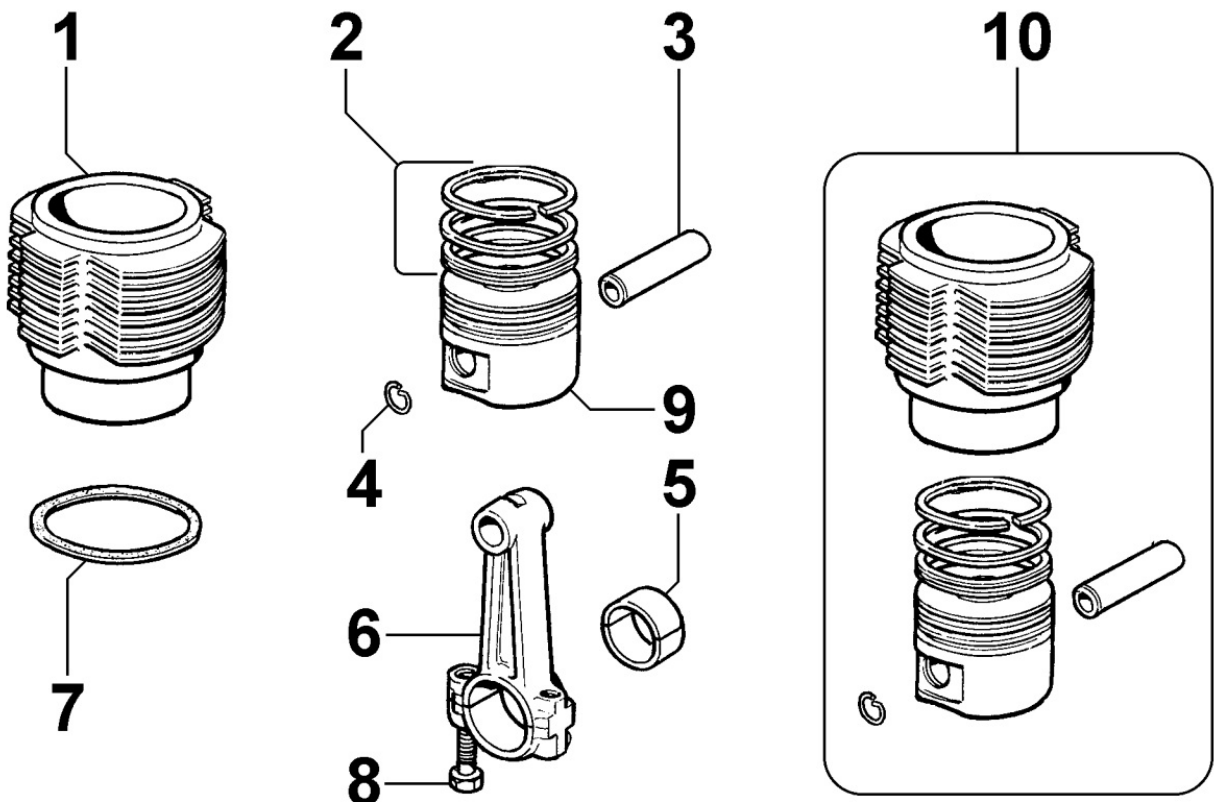
Index	Description
8170250100	FLYWHEEL PROTECTION

8010250320 - CRANKSHAFT



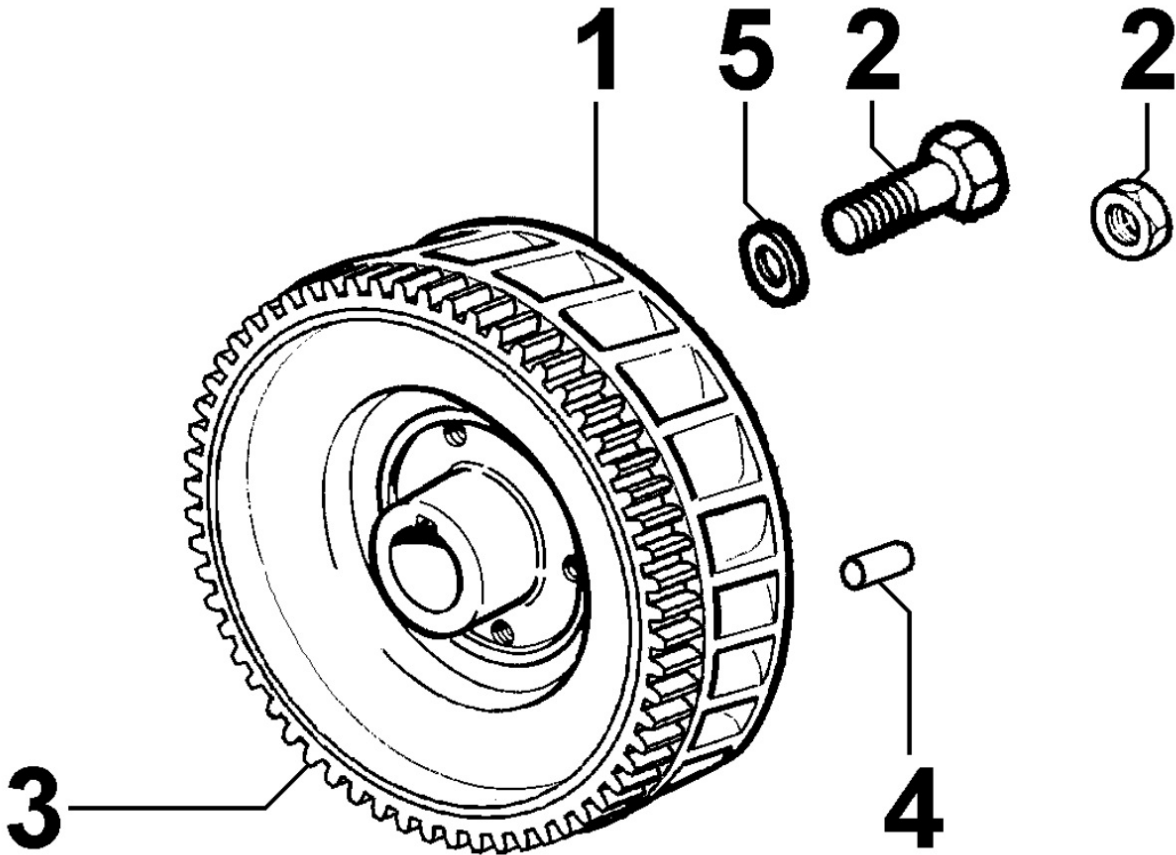
Pos	Kit	Included In	Code	Description	Qty	Old Code	Tech. Info
1	(A)		ED00A23R0010-S	CRANKSHAFT	1		
2		(A)	ED00498R0350-S	KEY	2		
4		(A) (B)	ED0089900520-S	TAPPO/PLUG N 10	4		


8011250150 - PISTON / CONNECTING ROD



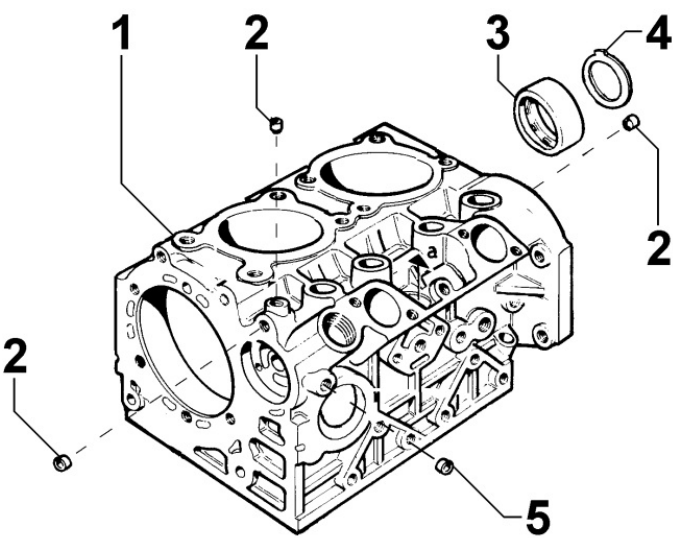
Pos	Kit	Included In	Code	Description	Qty	Old Code	Tech. Info
1		(C)	ED00204R0470-S	CYLINDER EPA	2		
2		(A)	ED00A26R0650-S	PISTON RINGS	2		
3		(A) (C)	ED00854R0170-S	PISTON PIN	2		
4		(A) (C)	ED0011600530-S	STOPRING	4		
5			ED00A26R0370-S	SLIDING BEARING	2	ED00316R0750-S	
5			ED00A26R0400-S	SLIDING BEARING	2	ED00316R0780-S	
5			ED00A26R0410-S	SLIDING BEARING	2	ED00316R0790-S	
6	(B)		ED00100R0450-S	CONNECTING ROD	2		
7			ED00451R0730-S	GASKET	2		
7			ED00451R0740-S	GASKET	2		
8		(B)	ED0017701010-S	BOLT	2		
9	(A)		ED0065022200-S	PISTON	2		
10	(C)		ED0048980450-S	ASS.Y	2		

8012250420 - FLYWHEEL



Pos	Kit	Included In	Code	Description	Qty	Old Code	Tech. Info
1	(A)		ED0098814770-S	FLYWHEEL	1		
2			ED00325R0840-S	NUT	1		
3		(A)	ED00256R0140-S	STARTING GEAR	1		

8020250230 - CRANKCASE



- 6

SERIE COMPLETA ANELLI E GUARNIZIONI  
JEU DE BAGUES ET JOINTS  
GASKET AND O-RING SET  
DICHTUNG-O-RINGSATZ  
SERIE DE JUNTAS Y DE AROS

25LD330-2  
MD150  
MD151
- 7

SERIE COMPLETA ANELLI E GUARNIZIONI  
JEU DE BAGUES ET JOINTS  
GASKET AND O-RING SET  
DICHTUNG-O-RINGSATZ  
SERIE DE JUNTAS Y DE AROS

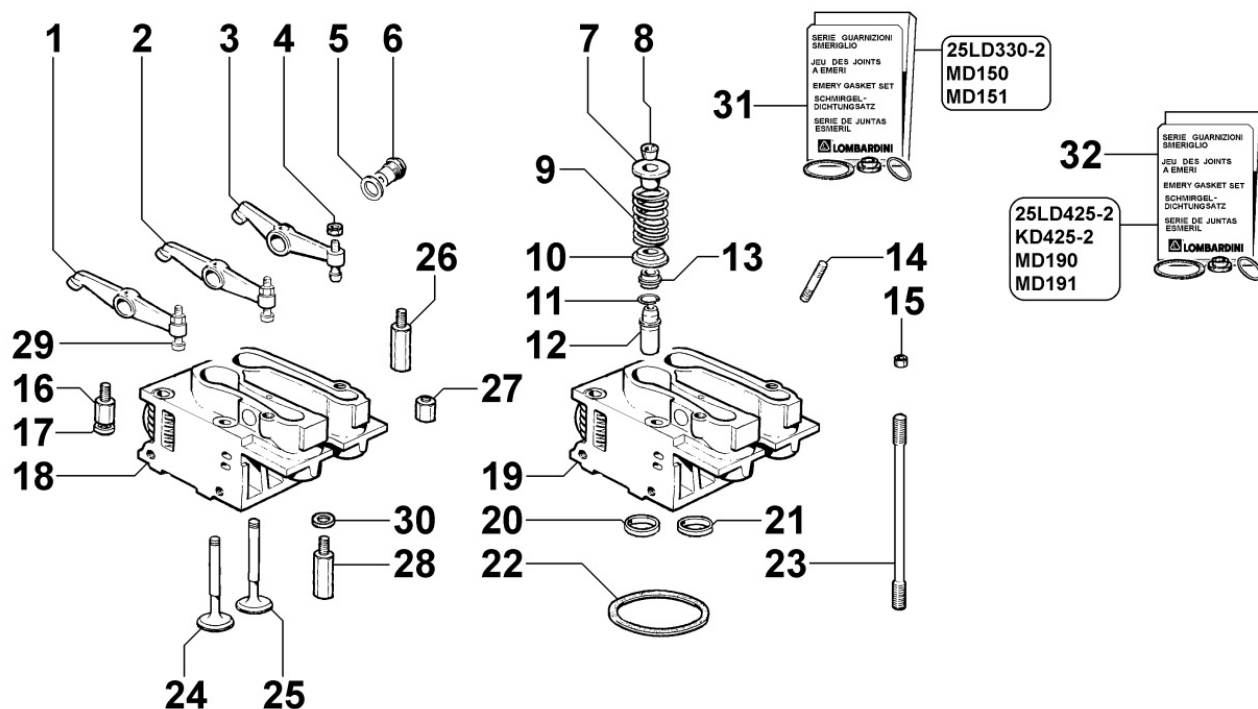
25LD425-2  
KD425-2  
MD190  
MD191
- 8

SERIE COMPLETA ANELLI E GUARNIZIONI  
JEU DE BAGUES ET JOINTS  
GASKET AND O-RING SET  
DICHTUNG-O-RINGSATZ  
SERIE DE JUNTAS Y DE AROS

25LD425-2 EPA  
KD425-2 EPA  
MD190 EPA  
MD191 EPA

Pos	Kit	Included In	Code	Description	Qty	Old Code	Tech. Info
1	(A)		ED0015112070-S	CRANKCASE	1		
2		(A)	ED0089900580-S	PLUG	4		
3			ED00310R0800-S	SLIDING BEARING	1		
3			ED00310R0810-S	SLIDING BEARING	1		
3		(A)	ED00310R0770-S	SLIDING BEARING	1		
6			ED00A21R0420-S	GASKET SET	1		
7			ED00A22R0910-S	GASKET SET	1		
8			ED00A26R0670-S	GASKET SET EPA	1		

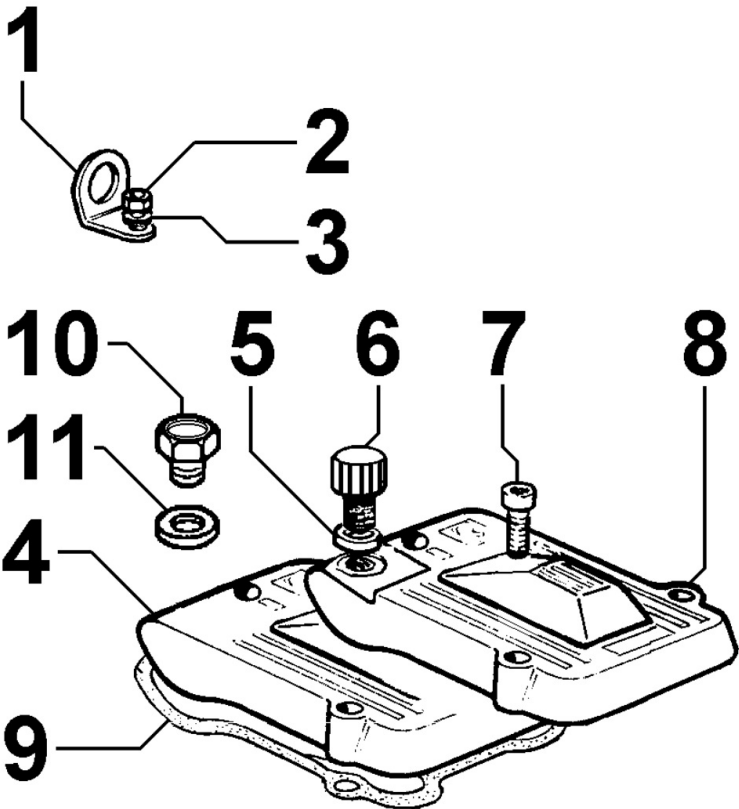
## 8021251310 - CYLINDER HEAD



Pos	Kit	Included In	Code	Description	Qty	Old Code	Tech. Info
2	(D)	(B)	ED0015413180-S	INTAKE ROCKER ARM	2		
3	(D)	(B)	ED0015413190-S	EXHAUST ROCKER ARM	2		
5		(B)	ED0046700880-S	GASKET	4		
6		(B)	ED00602R0030-S	PIN	4		
7		(B)	ED0064001010-S	RETAINER	4		
8		(B)	ED00809R0040-S	LOCK	8		
9		(B)	ED00540R0770-S	SPRING	4		
10		(B)	ED0064000980-S	RETAINER	4		
11		(C)	ED00059R0680-S	RING	4		
12	(C)	(E)	ED00464R0740-S	VALVE GUIDE	4		
13		(A) (B)	ED0045350150-S	VALVE STEM SEAL d.7	4		
14		(B)	ED00676R0880-S	STUD	2		
15			ED00326R0380-S	NUT	7		
16			ED00326R0410-S	NUT	1		
17			ED00772R0020-S	WASHER	8		
19	(E)		ED00A26R0630-S	CYLINDER HEAD	2	ED0092011780-S	
20		(A) (B) (E)	ED00060R0940-S	RING EPA	2		
21		(A) (B) (E)	ED00060R0950-S	RING EPA	2		
22			ED0047308910-S	HEAD GASKET	1		
22			ED0047308920-S	GASKET	1		
22			ED0047308930-S	GASKET	1		
22			ED0047308940-S	GASKET	1		
23			ED00684R0340-S	STUD BOLT	8		
24		(B)	ED00960R0890-S	VALVE EPA	2		
25		(B)	ED00960R0880-S	VALVE EPA	2		
29		(A) (B) (D)	ED0098501590-S	ADJUSTING SCREW M6	4		
31			ED00A21R0410-S	GASKET	1		

Table 1. Demographic characteristics of the study population	
Characteristic	Frequency (n=100)
Age (years)	
< 18	10
18-24	20
25-34	30
35-44	25
45-54	15
55-64	10
65-74	5
75+	5
Gender	
Male	55
Female	45
Ethnicity	
White	60
Black	20
Hispanic	15
Asian	5
Other	0
Marital Status	
Married	40
Single	30
Divorced	15
Widowed	15

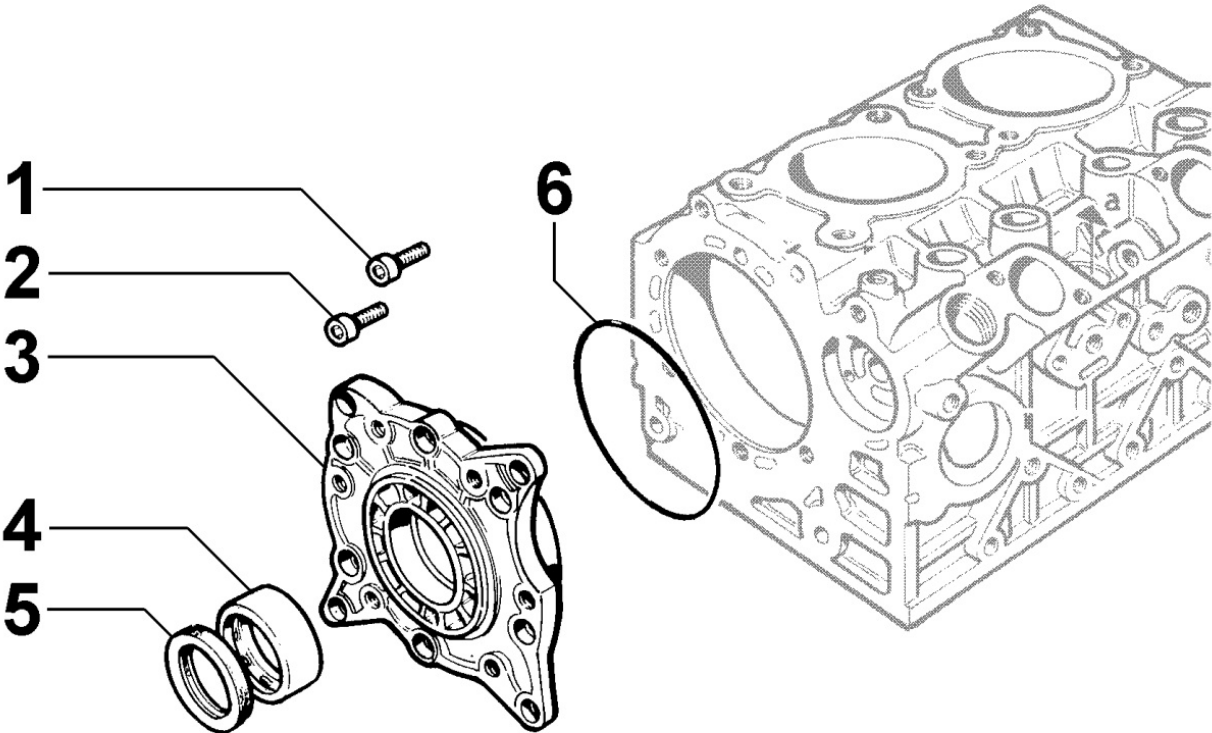
8022250010 - HEAD COVER



Pos	Kit	Included In	Code	Description	Qty	Old Code	Tech. Info
1			ED0085060030-S	AN.BRACKET	1		
2			ED0032400160-S	HEX.NUT	1		
3			ED0076250120-S	WASHER	1		
4			ED00233R0820-S	COVER	1		
6			ED0090320950-S	FILLERPL.	1		
7			ED0097320780-S	SCREW	6		
8			ED00233R0840-S	COVER	1		
9			ED0044001410-S	GASKET ROCKER ARM COVER	2		
11			ED00758R0390-S	WASHER	1		

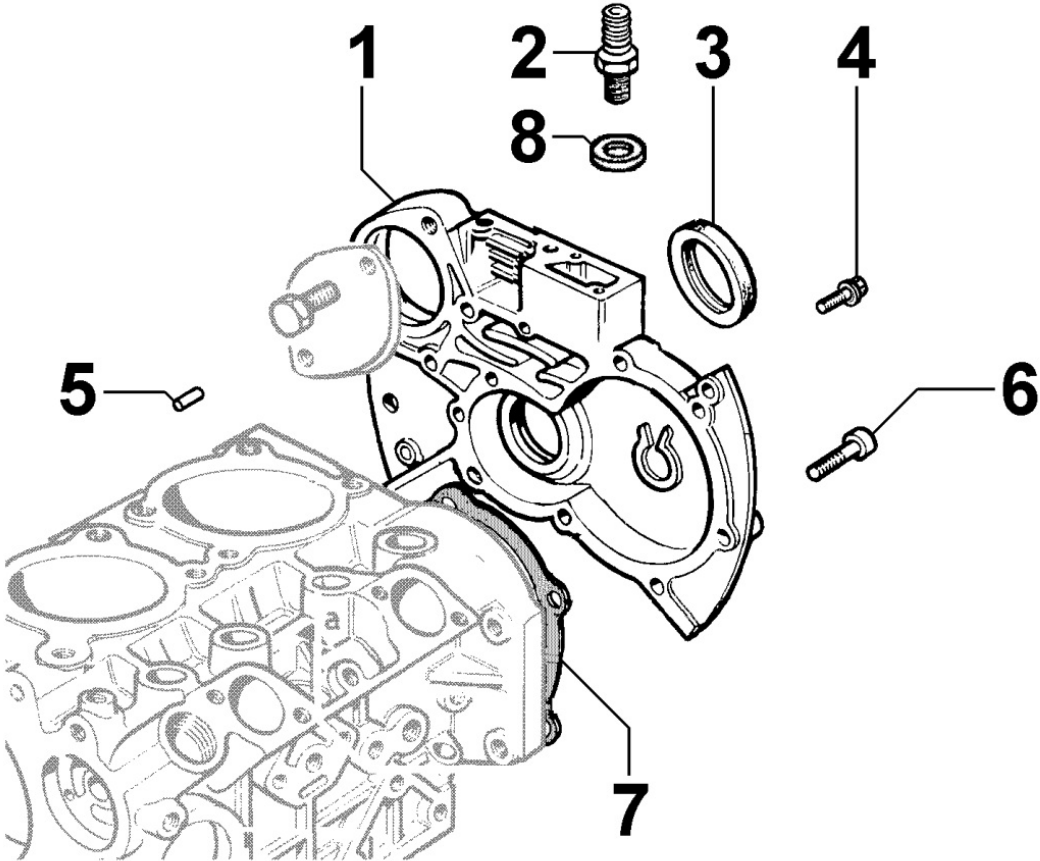


8023250010 - FLYWHEEL SIDE SUPPORT



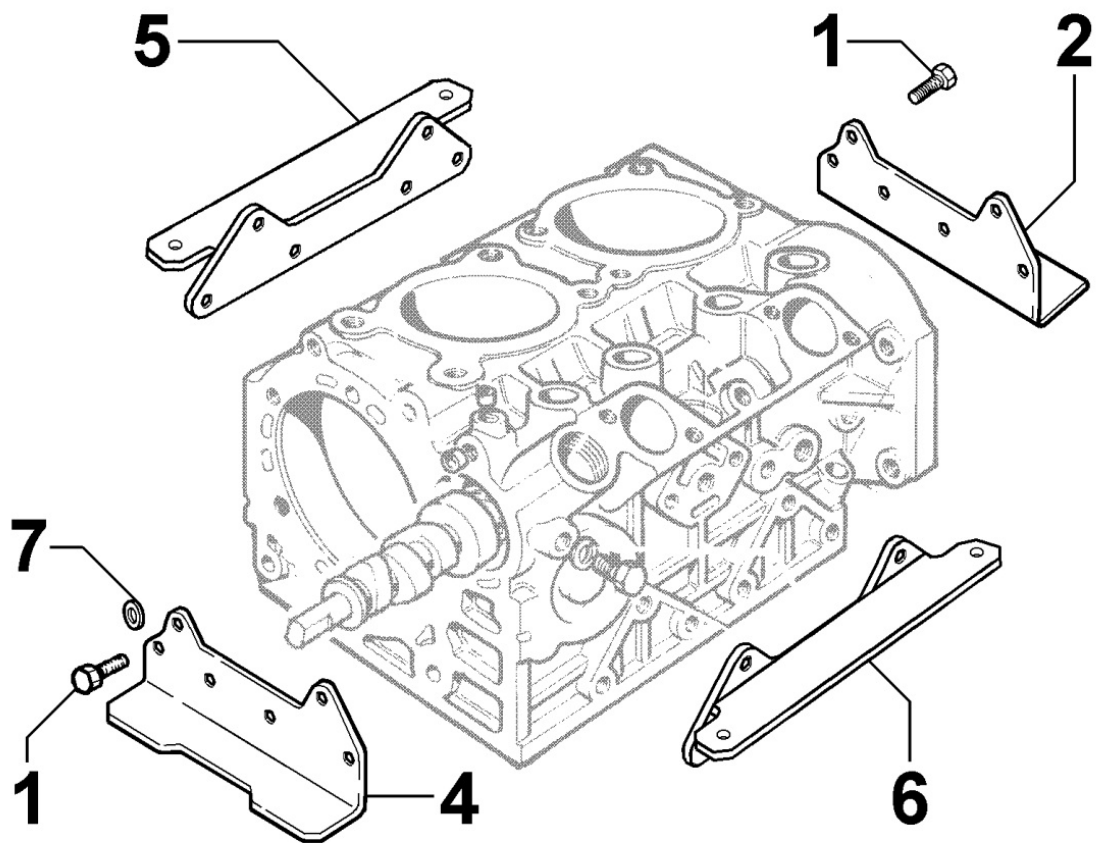
Pos	Kit	Included In	Code	Description	Qty	Old Code	Tech. Info
1			ED0097320920-S	SCREW	2		
2			ED0097301180-S	SCREW	8		
3	(A)		ED0086753000-S	SUPPORT	1		
4			ED00310R0800-S	SLIDING BEARING	1		
4			ED00310R0810-S	SLIDING BEARING	1		
4		(A)	ED00310R0770-S	SLIDING BEARING	1		
5		(A)	ED00054R0170-S	SEALING OIL RING 45X60X7	1		
6			ED00579R0780-S	O-RING	1		

8024250010 - CRANKCASE COVER



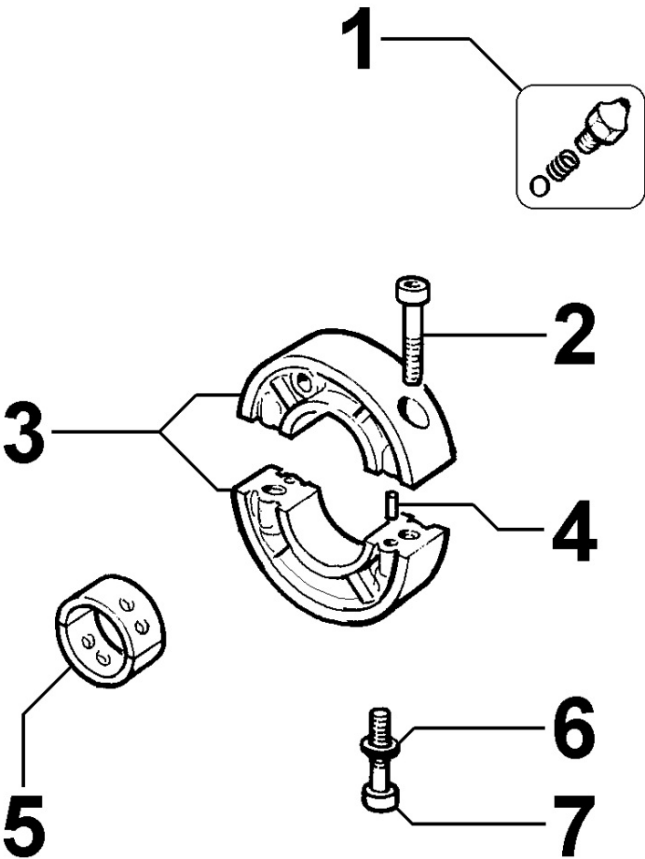
Pos	Kit	Included In	Code	Description	Qty	Old Code	Tech. Info
1	(A)		ED00241R0100-S	COVER FOR DISTRIBUTION MD/2 COMPLETE	1		
2		(A)	ED00717R0800-S	UNION	1		
3			ED00054R0310-S	ANELLO TEN.OLIO 38X52X8 1AZ	1		
4			ED0017601310-S	BOLT	1		
5			ED0084001200-S	PARAL.PIN	1		
6			ED0097320640-S	SCREW	10		
7			ED0044312240-S	GASKET	1		

8025250120 - ENGINE MOUNTS



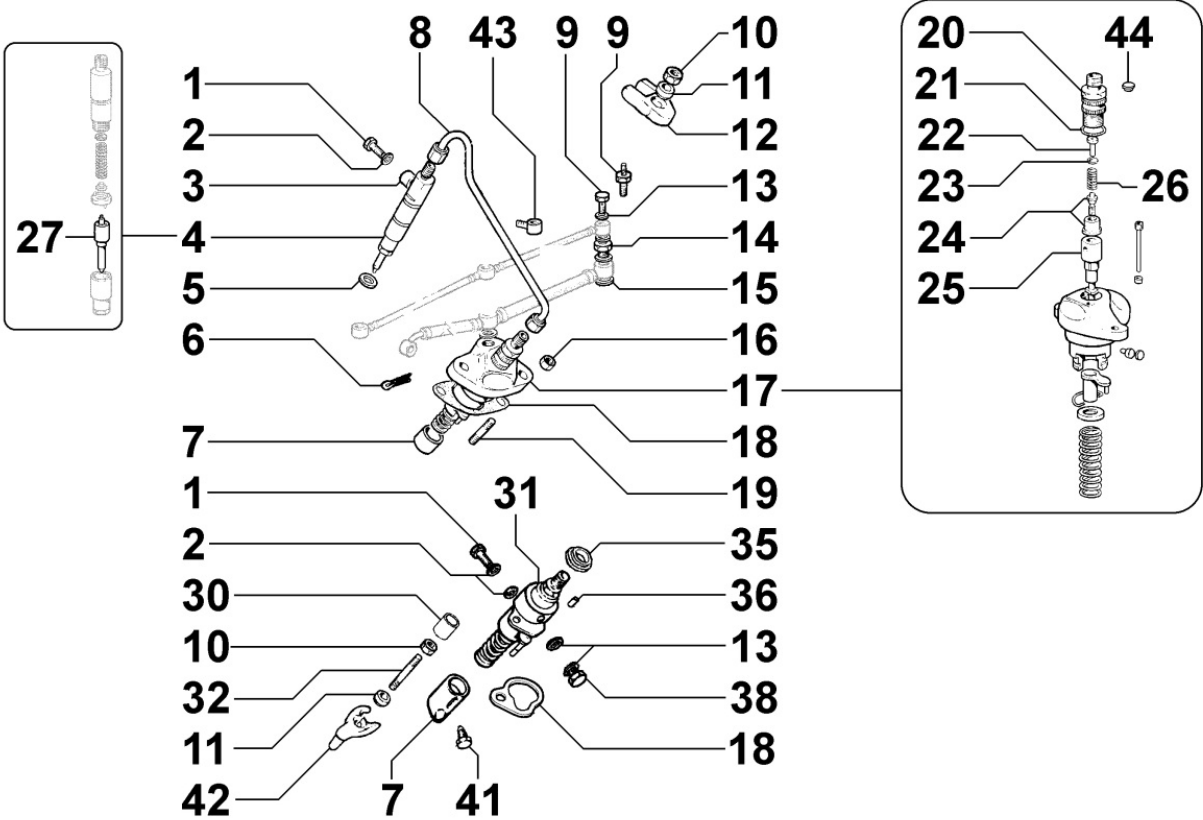
Pos	Kit	Included In	Code	Description	Qty	Old Code	Tech. Info
1			ED0017700050-S	BOLT	6		
7			ED0076250980-S	WASHER	6		

8026250020 - CRANKSHAFT CENTRAL SUPPORT



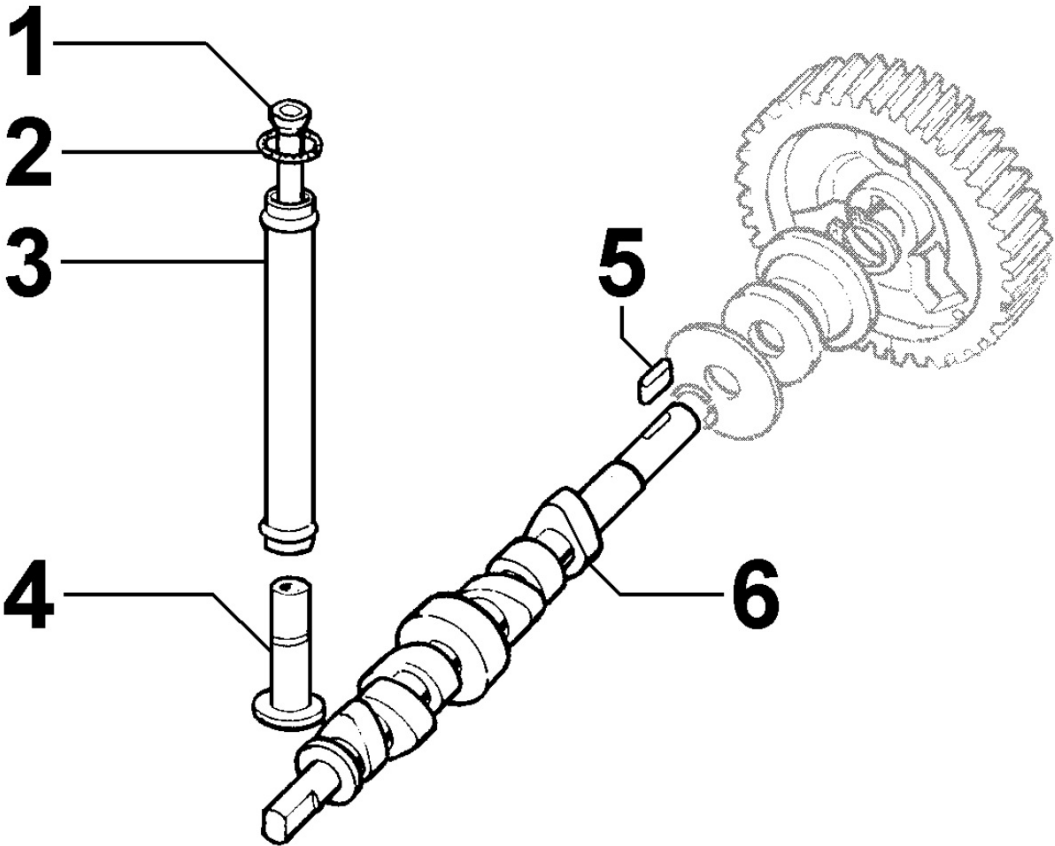
Pos	Kit	Included In	Code	Description	Qty	Old Code	Tech. Info
1			ED00956R0420-S	VALVE	2		
2			ED0097300310-S	ALLEN SCREW	2		
3			ED00880R0630-S	SUPPORT	1		
4			ED0084000200-S	PARAL.PIN	2		
5			ED00A26R0490-S	SLIDING BEARING	2	ED00310R0310-S	
5			ED00A26R0500-S	SLIDING BEARING	1	ED00310R0430-S	
5			ED00A26R0510-S	SLIDING BEARING	1	ED00310R0440-S	
6			ED0076250100-S	WASHER	2		
7			ED0097300320-S	SCREW	2		

8030250030 - INJECTION SYSTEM



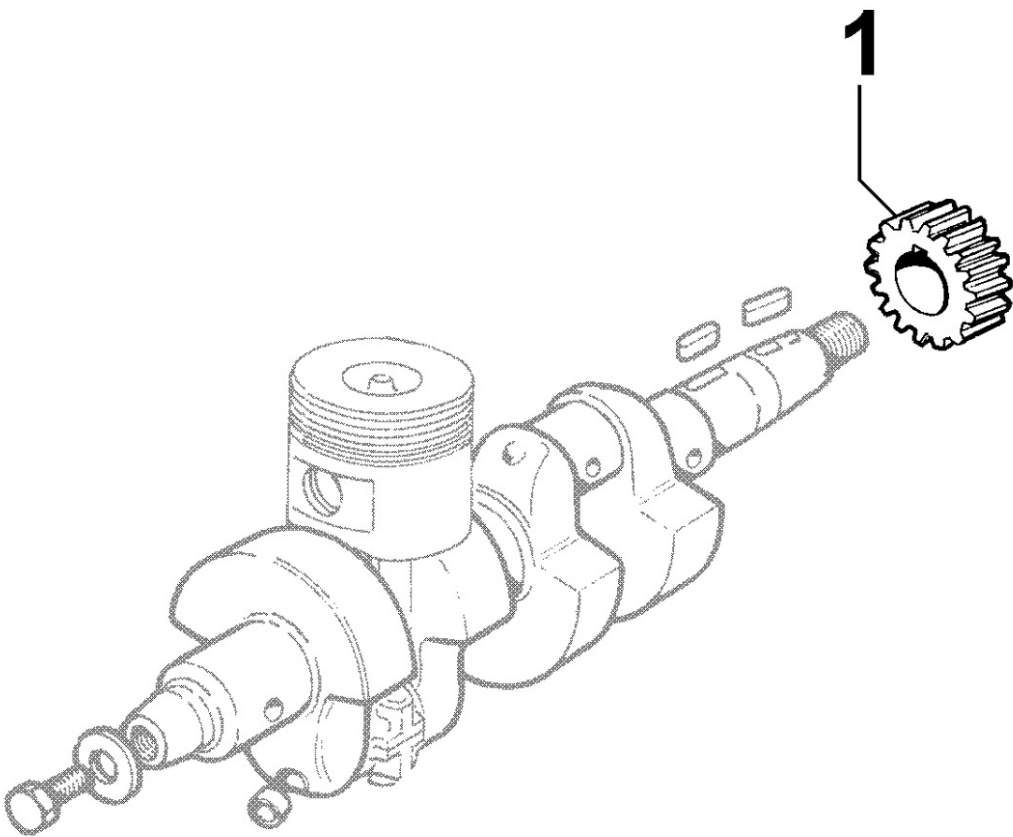
Pos	Kit	Included In	Code	Description	Qty	Old Code	Tech. Info
1			ED0072600530-S	UNION	2		
2			ED0046700620-S	GASKET	2		
3			ED00754R0500-S	WASHER	2		
4	(A)		ED00644R0470-S	SPRAYER COMPLETE NEW-DIESEL	2		
5			ED00754R0510-S	WASHER	4		
5			ED00754R0350-S	WASHER	2		
6			ED00555R0370-S	SPRING	3		
7			ED0072150350-S	TAPPET	2		
8			ED00944R0680-S	PIPE	2		
9			ED00716R0170-S	UNION	2		
10			ED0032400160-S	HEX.NUT	2		
11			ED00771R0970-S	WASHER	2		
12			ED00858R0940-S	BRACKET	2		
13			ED0046700580-S	COPPER GASKET	6		
14			ED0019010120-S	BOLT	2	ED0019010130-S	
14			ED0019010120-S	BOLT	2	ED0082550110-S	
15			ED0046700600-S	C.GASKET	4		
16			ED0032030990-S	NUT	4		
17	(B)		ED00656R0600-S	INJE.PUMP	2		
18			ED0045800230-S	GASKET 0.30	2		
18			ED0045800290-S	GASKET 0.10	6		
18			ED0045800570-S	GASKET 0.05	2		
19			ED0067800680-S	STUD	4		
25		(B)	ED00660R0240-S	POMPANTE/PUMPING ELEMENT	2		
27		(A)	ED00644R0680-S	NOZZLE	1	ED00644R0530-S	

8035250030 - CAMSHAFT



Pos	Kit	Included In	Code	Description	Qty	Old Code	Tech. Info
1			ED00072R0100-S	PUSH ROD	4		
2			ED0012000060-S	O RING	8		
3			ED00940R0380-S	PIPE	4		
4			ED00708R0190-S	TAPPET	4		
5			ED00498R0360-S	KEY	1		
6			ED00A23R0020-S	CAMSHAFT	1		

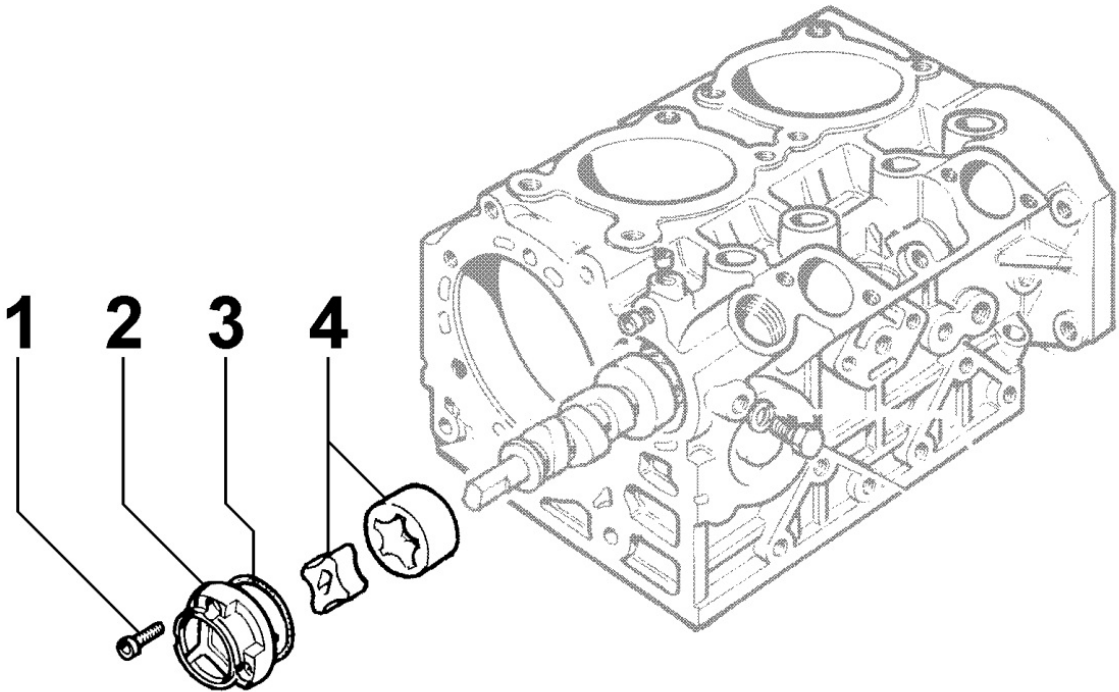
8038250010 - TIMING GEAR



Pos	Kit	Included In	Code	Description	Qty	Old Code	Tech. Info
1			ED00469R0640-S	GEAR	1		



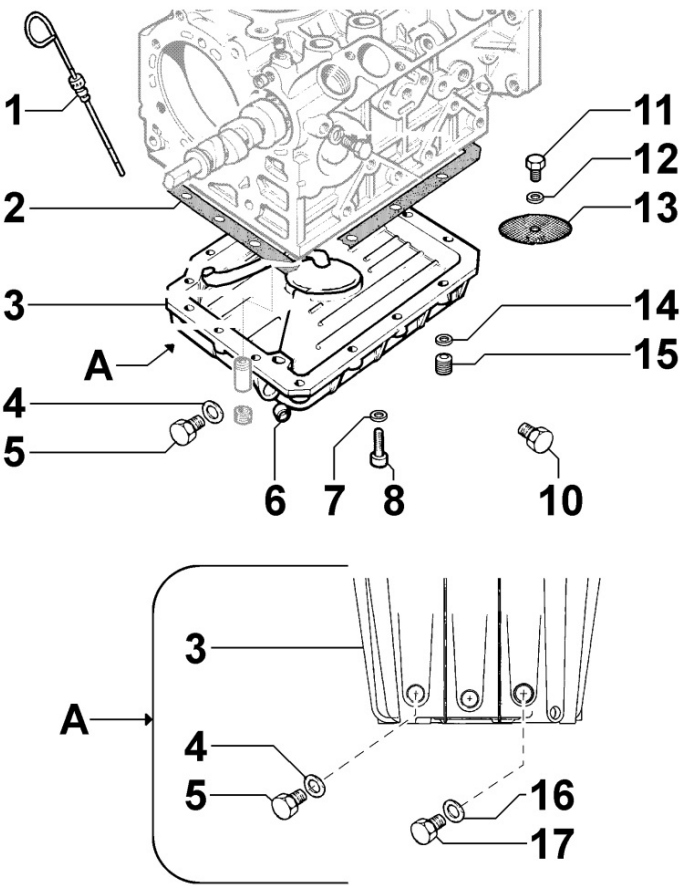
8040250010 - OIL PUMP



Pos	Kit	Included In	Code	Description	Qty	Old Code	Tech. Info
1			ED0097304380-S	SCREW TCEI M5x28 UNI5931-8G	3		
2			ED00233R0860-S	COVER	1		
3			ED00579R0490-S	RING	1		
4			ED00A21R0430-S	OIL PUMP	1		

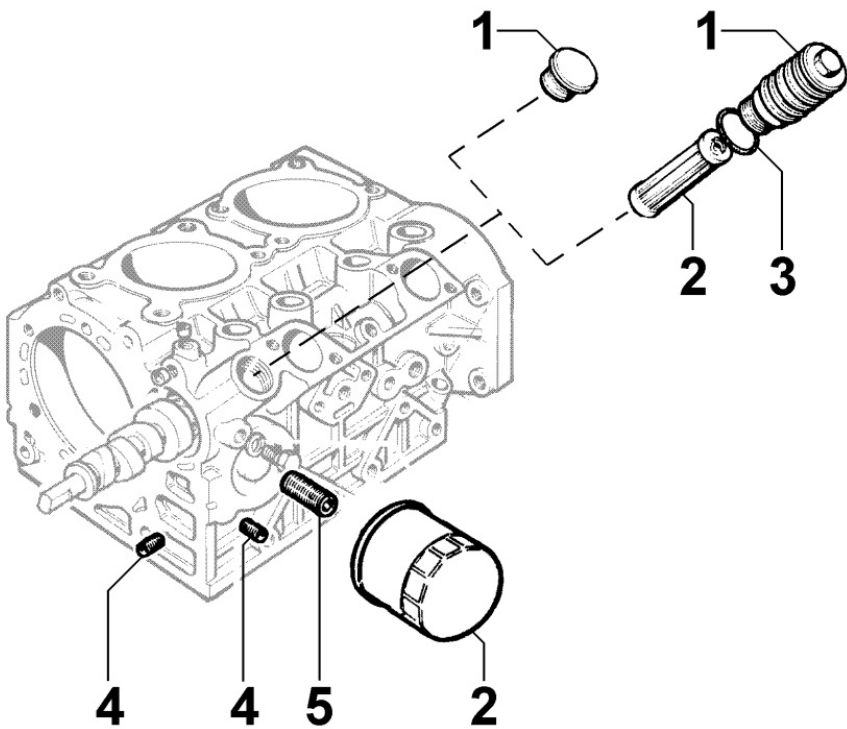


8041250010 - OIL PAN



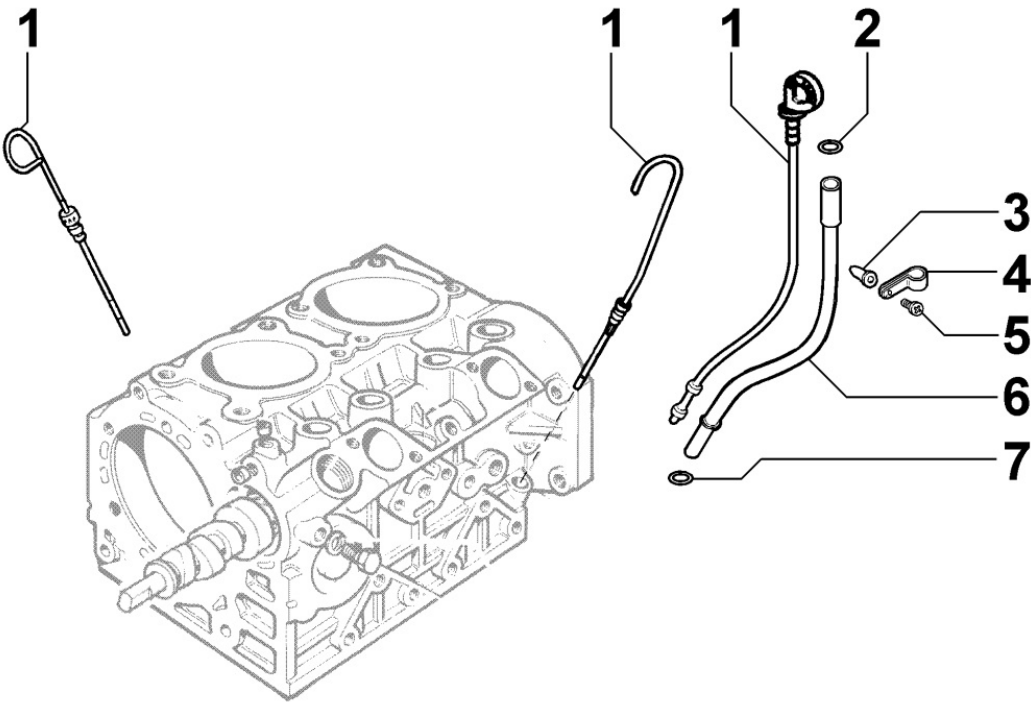
Pos	Kit	Included In	Code	Description	Qty	Old Code	Tech. Info
2			ED0046012210-S	GASKET	1		
3	(A)		ED0066456230-S	OIL PAN	1		
4		(A)	ED0046700610-S	C.GASKET	1		
5		(A)	ED0089650050-S	CAP	1		
6		(A)	ED00886R0570-S	PLUG	1		
8			ED0017601380-S	BOLT	15		
11		(A)	ED0017600010-S	BOLT	1		
12		(A)	ED0076250080-S	WASHER	1		
13		(A)	ED00734R0720-S	NET	1		

8042250100 - OIL FILTER



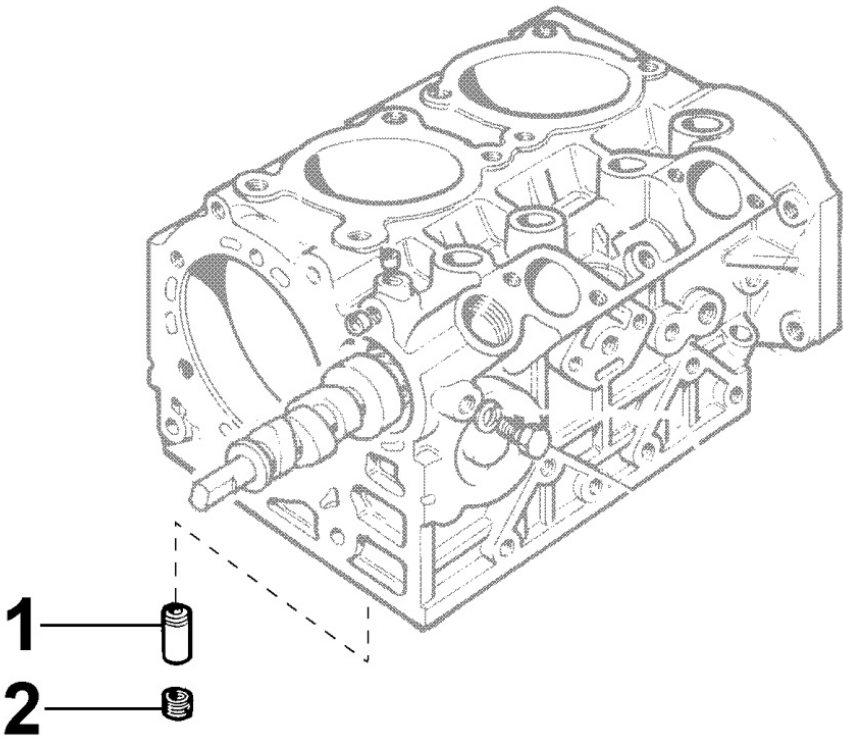
Pos	Kit	Included In	Code	Description	Qty	Old Code	Tech. Info
1			ED00886R0740-S	PLUG	1		
2			ED0021750400-S	OIL FILTER CARTRIDGE	1		
4			ED0097651110-S	A.GRUBSCREW	2		
5			ED00717R0370-S	UNION	1		

8043250010 - OIL DIPSTICK



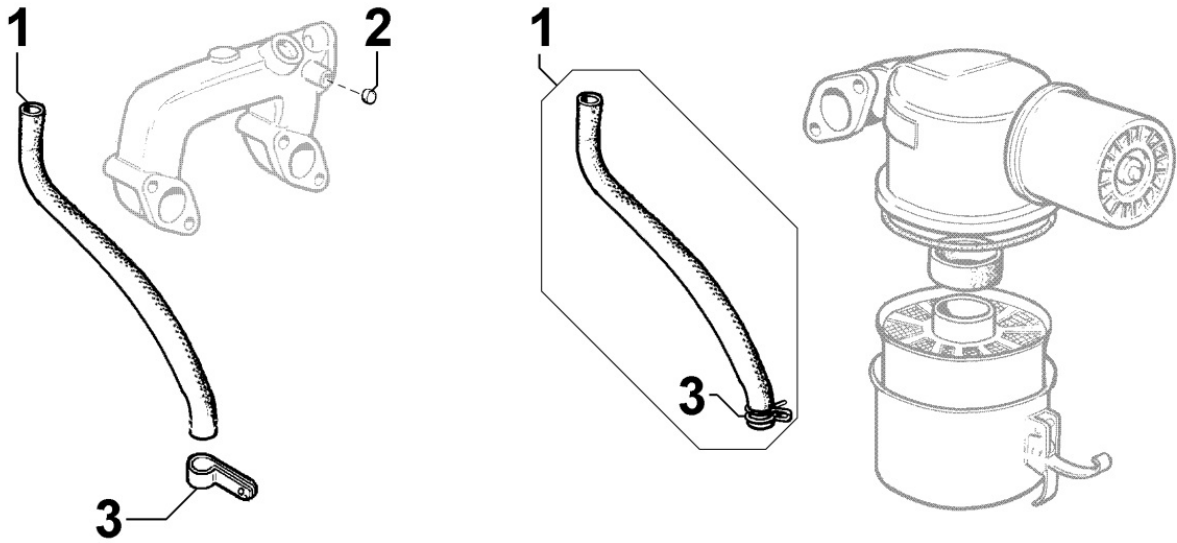
Pos	Kit	Included In	Code	Description	Qty	Old Code	Tech. Info
1			ED00076R0480-S	OIL DIPSTICK	1		

8044250010 - OIL PRESSURE VALVE



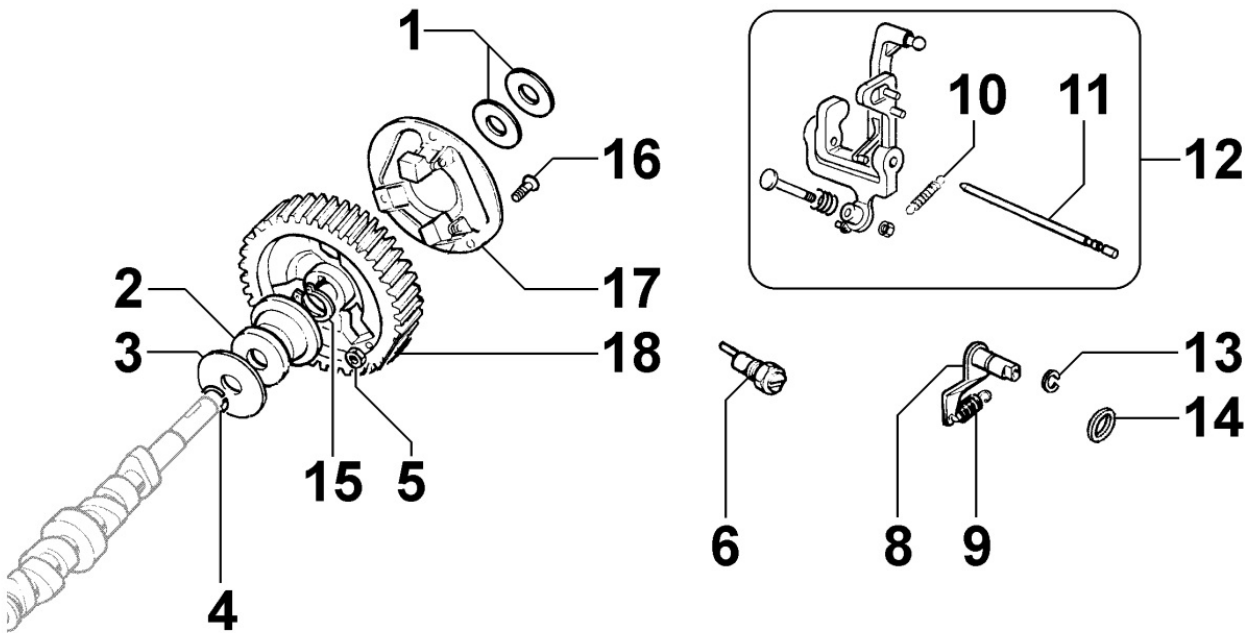
Pos	Kit	Included In	Code	Description	Qty	Old Code	Tech. Info
1			ED00956R0450-S	VALVE	1		
2			ED00999R0200-S	SCREW	1		

8045250020 - BREATHER SYSTEM



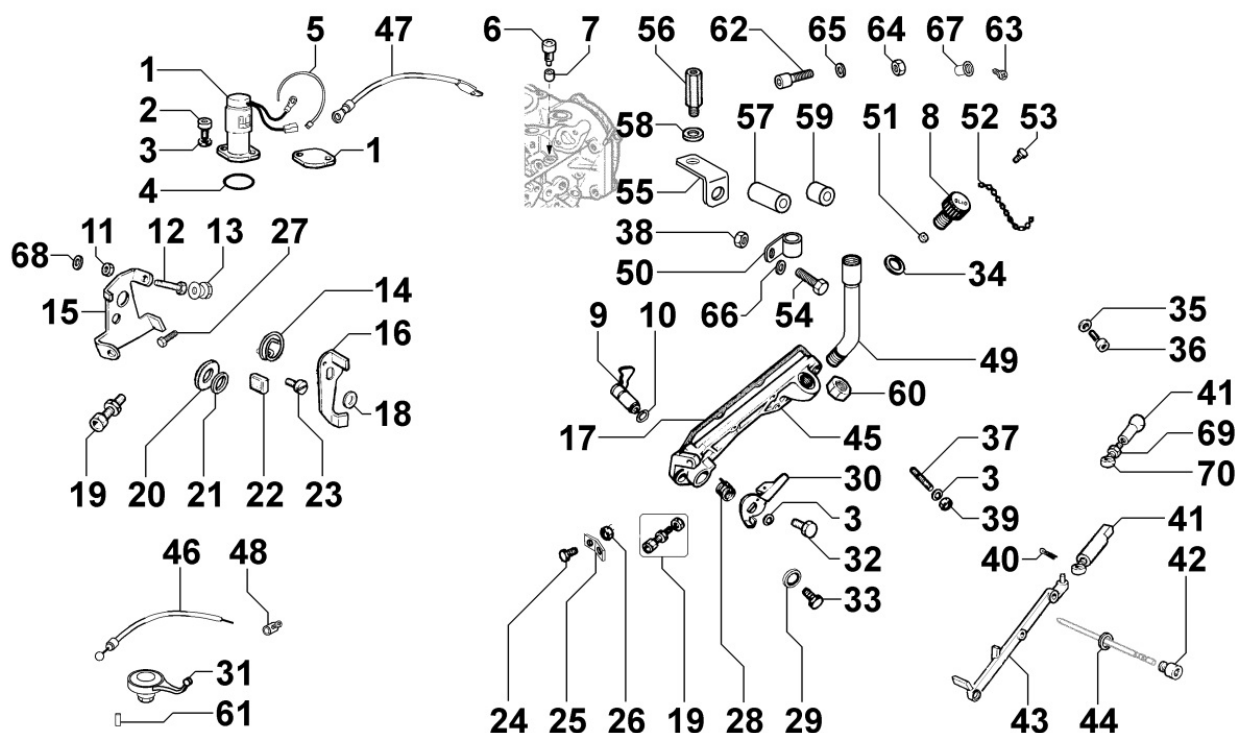
Pos	Kit	Included In	Code	Description	Qty	Old Code	Tech. Info
1	(A)		ED00949R0510-S	PIPE	1		
3		(A)	ED0036301780-S	CLAMP	1		

8050250010 - SPEED GOVERNOR



Pos	Kit	Included In	Code	Description	Qty	Old Code	Tech. Info
1			ED00777R0330-S	WASHER	1		
1			ED00777R0340-S	WASHER	1		
2			ED00621R0220-S	CAP	1		
3			ED00777R0780-S	WASHER	1		
4			ED00059R0850-S	RING	1		
5			ED0032030380-S	HEX.NUT	3		
6			ED00722R0410-S	REGISTRO/ADJUSTING SCREW	1		
8			ED00491R0660-S	LEVER EPA	1		
9			ED00551R0290-S	SPRING	1		
10		(A)	ED00551R0140-S	SPRING	1		
11		(A)	ED00601R0770-S	PIN	1		
12	(A)		ED00495R0060-S	LEVA/LEVER	1		
13			ED0011650360-S	RING	1		
15			ED0012400130-S	SNAP RING	1		
16			ED00997R0880-S	SCREW SPEI M5x16 UNI5933 10.9	3		
17			ED0048966740-S	REGULATOR GROUP RUGGERINI	1		

## 8051250090 - CONTROLS

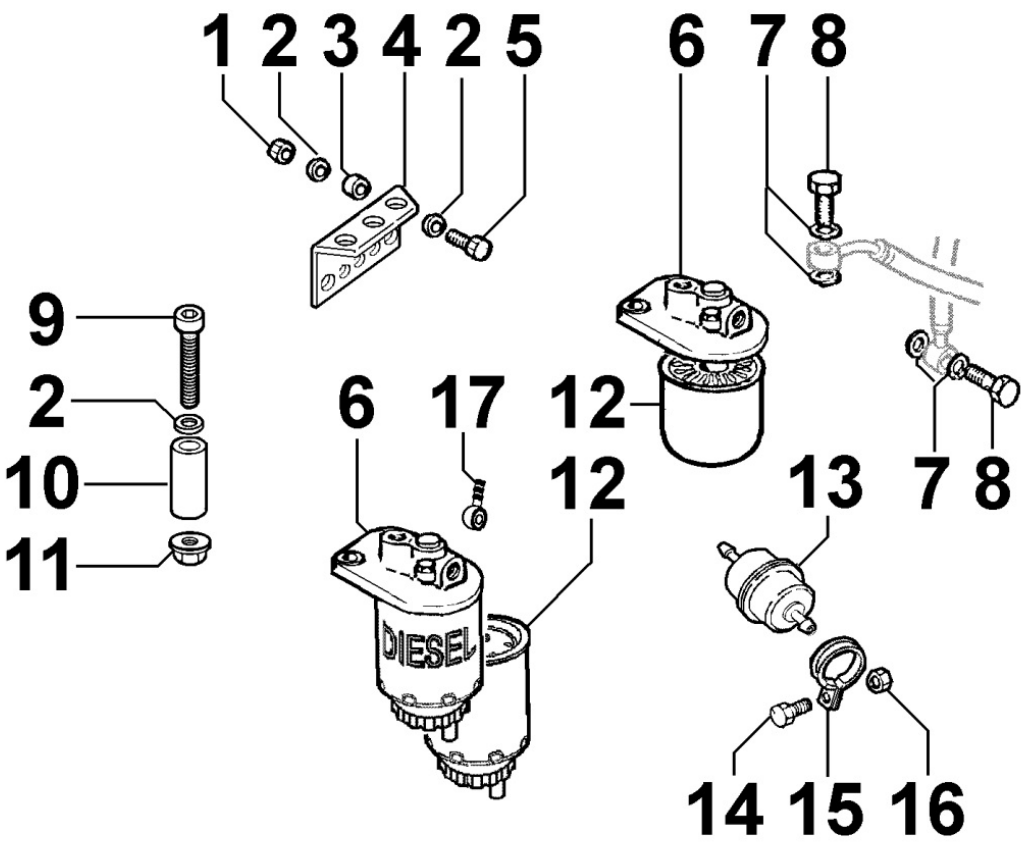


Pos	Kit	Included In	Code	Description	Qty	Old Code	Tech. Info
1			ED00674R0680-S	SOLENOID	1		
2			ED0097320840-S	SCREW	2		
3		(C)	ED0076250080-S	WASHER	4		
4			ED00579R0790-S	RING	1		
5			ED0024710190-S	COLLAR	2		
8			ED0090320950-S	FILLERPL.	1		
9	(B)	(C)	ED00494R0880-S	LEVER	1		
10		(B) (C)	ED0012000010-S	O RING	1	ED00579R0010-S	
11		(A)	ED0032400040-S	HEX.NUT	2		
12		(A)	KDISC.		1	ED0017550190-S	
14			ED00547R0230-S	SPRING	1		
15	(A)		ED00613R0910-S	PIASTRINA/PLATE	1		
16			ED0052012700-S	LEVER	1		
17			ED0044312250-S	GASKET	1		
19			ED0091801930-S	END	1		
23			ED0017700010-S	BOLT	1		
27		(A)	ED0017550030-S	BOLT	1		
28		(C)	ED00547R0280-S	SPRING	1		
29			ED0076252740-S	WASHER	2		
30		(C)	ED00491R0670-S	LEVER	1		
32		(C)	ED0017600010-S	BOLT	1		
33			ED0017600030-S	BOLT	1		
34		(C)	ED00758R0390-S	WASHER	1		
35			ED0046700580-S	COPPER GASKET	2		
36			ED0097320780-S	SCREW	5		
37			ED0067600340-S	STUD	1		
39			ED00323R0070-S	NUT	1		
40			ED00555R0370-S	SPRING	1		
41			ED00833R0100-S	TIE ROD	1		
42			ED00989R0620-S	SCREW	1		
43			ED00927R0140-S	TIE ROD	1		
44			ED0046700590-S	COPPER GASKET 10,2X14X1,5	1		



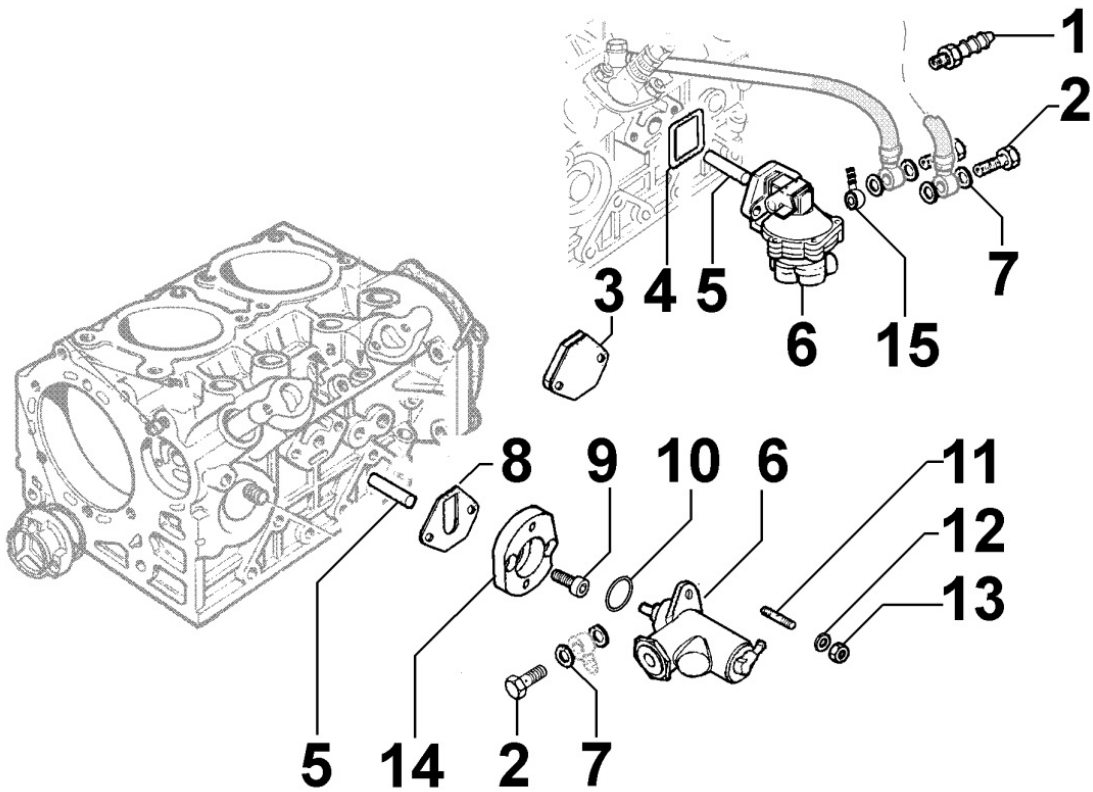


8061250200 - FUEL FILTER



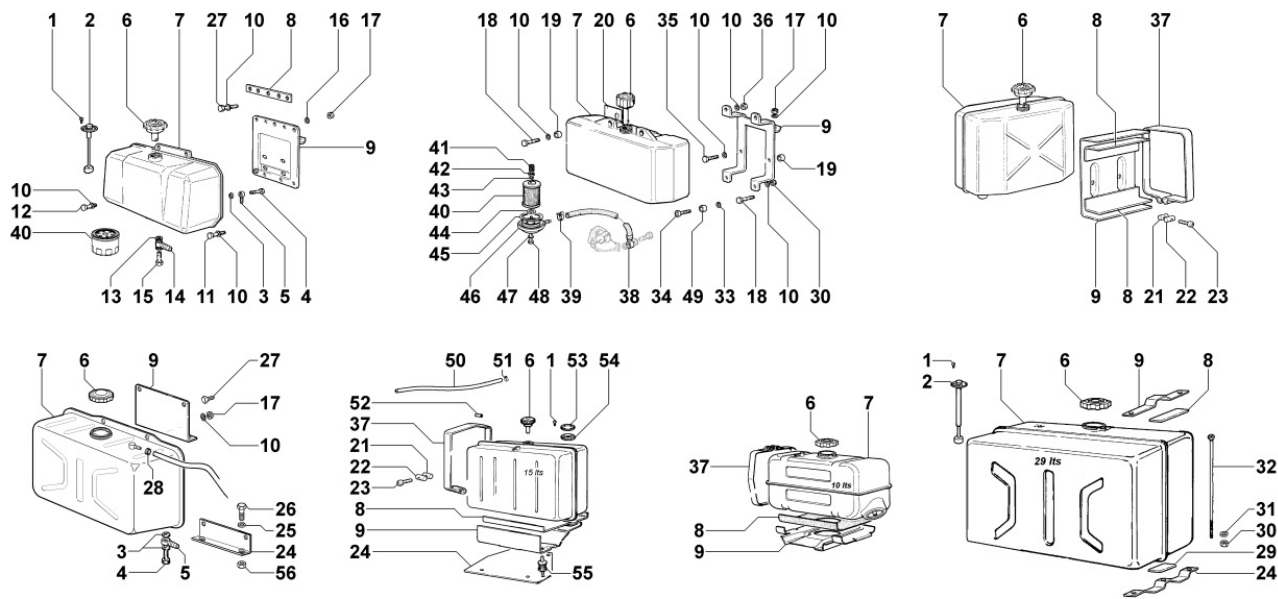
Pos	Kit	Included In	Code	Description	Qty	Old Code	Tech. Info
1			ED0032400160-S	HEX.NUT	2		
2			ED0076250120-S	WASHER	4		
3			ED0035260970-S	SPACER	2		
4			ED00612R0310-S	PLATE	1		
5			ED0017700090-S	BOLT	2		
6	(A)		ED0037301570-S	FUEL FIL.	1		
7			ED0046700610-S	C.GASKET	4		
8			ED0019010320-S	UNION BOLT	2		
12		(A)	ED0021750450-S	FUEL FILTER CARTRIDGE	1	ED0021752350-S	

8062250180 - FUEL FEED PUMP



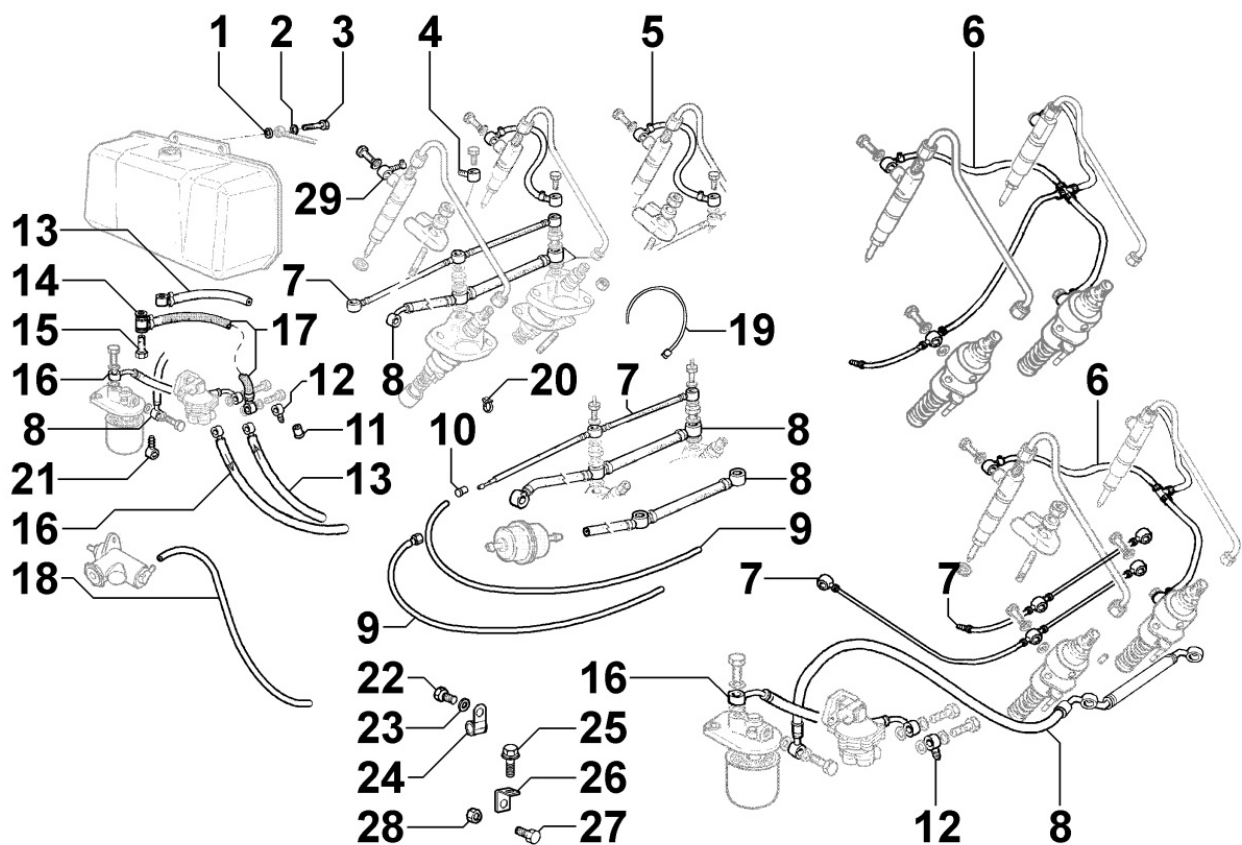
Pos	Kit	Included In	Code	Description	Qty	Old Code	Tech. Info
2			ED0019011930-S	BOLT	2		
4			ED0012000870-S	O RING	1		
5			ED00704R0130-S	DRIVE ROD	1		
6			ED0065851510-S	FUEL FEEDING PUMP	1		
7			ED0046700590-S	COPPER GASKET 10,2X14X1,5	4		
11			ED0067800490-S	STUD	2		
12			ED0075550290-S	WASHER	2		
13			ED0032401640-S	HEX.NUT	2		

8063250050 - FUEL TANK



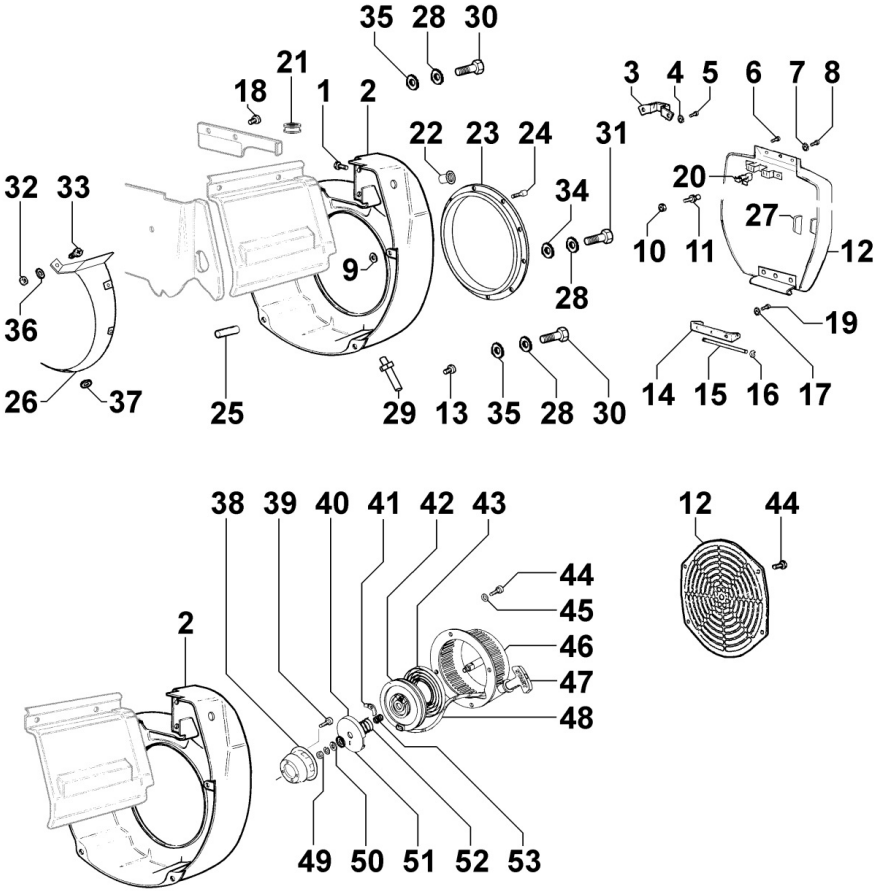
Pos	Kit	Included In	Code	Description	Qty	Old Code	Tech. Info
12			ED0017700050-S	BOLT	2		

8064250290 - FUEL PIPING



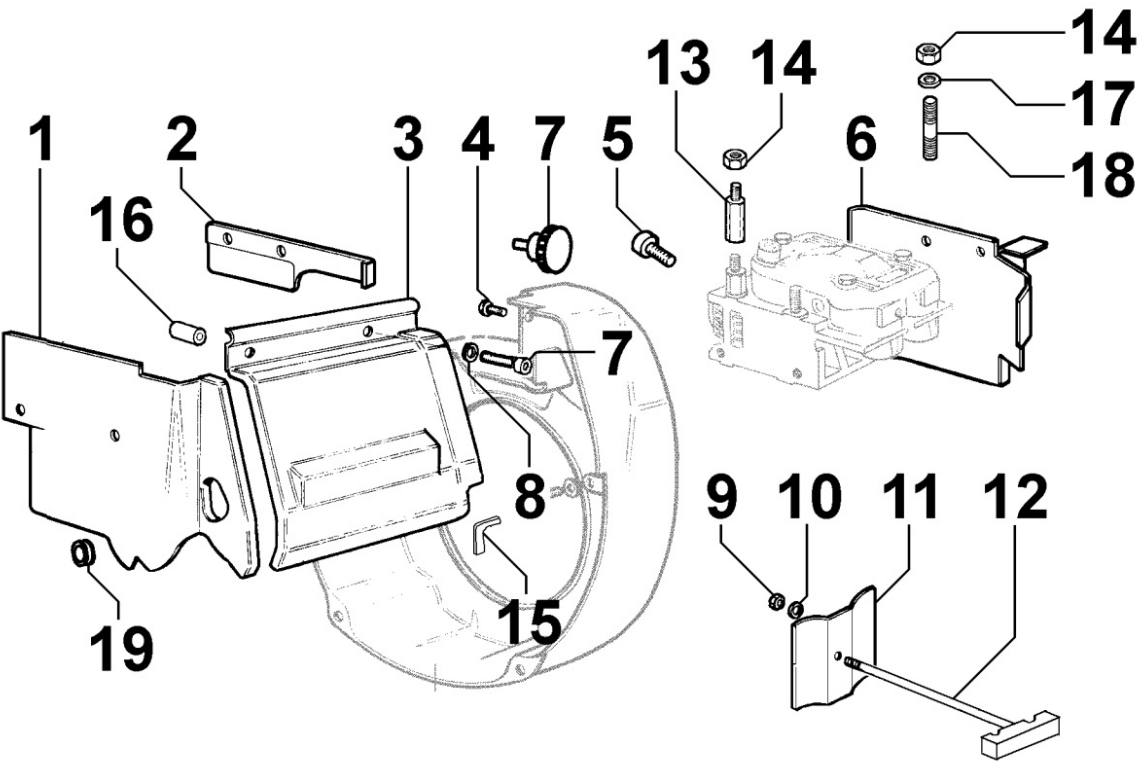
Pos	Kit	Included In	Code	Description	Qty	Old Code	Tech. Info
5			ED0095712520-S	FUEL TUBE	2		
7			ED00938R0240-S	PIPE	1		
8			ED00937R0470-S	PIPE, FUEL	1		
10			ED0021450380-S	CAP	1		
11			ED0021450370-S	CAP	1		
12			ED0072701040-S	UNION	1		
16			ED0093758540-S	TUBE	1		
19			ED0024710190-S	COLLAR	2		

8070250290 - AIR SHROUD



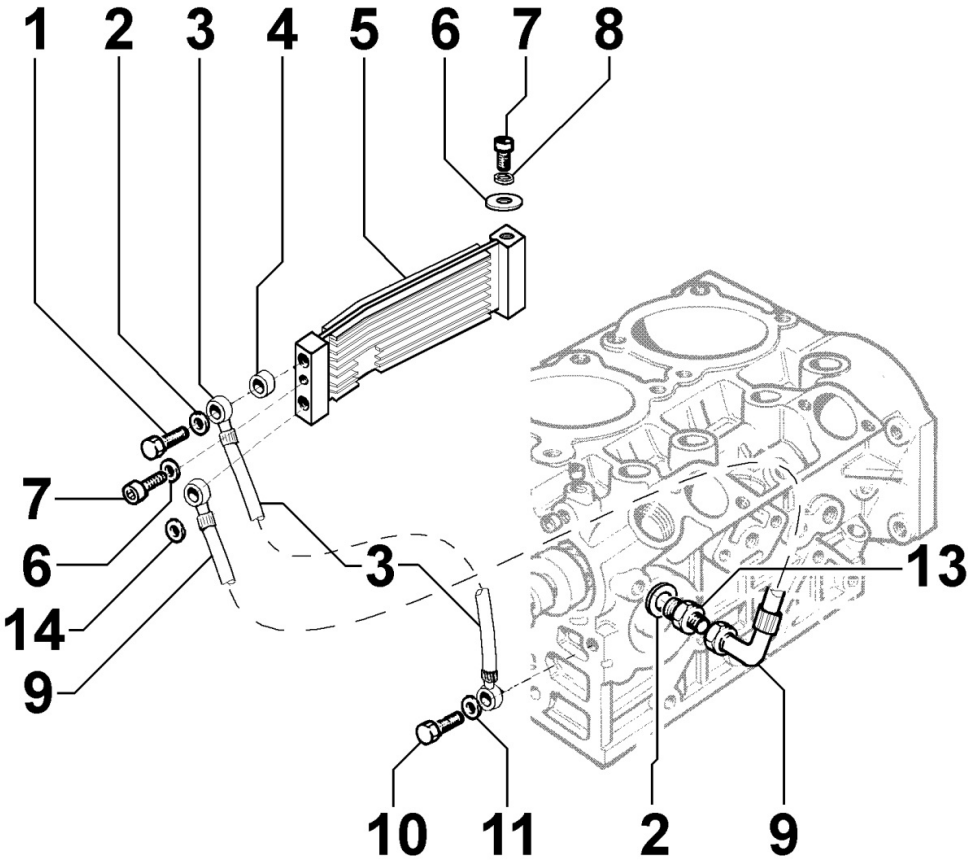
Pos	Kit	Included In	Code	Description	Qty	Old Code	Tech. Info
1			ED0097301070-S	SCREW	2		
2			ED0025696760-S	CONVEYOR	1	ED00228R0720-S	
9			ED0076250080-S	WASHER	2		
18			ED0097901380-S	SCREW M6x10	2		
22			ED00742R0150-S	RIVET	1		

8072250030 - COOLING PLATES



Pos	Kit	Included In	Code	Description	Qty	Old Code	Tech. Info
1			ED00589R0190-S	PARATIA/BULKHEAD	1		
2			ED00589R0070-S	CONVEYOR	1		
3			ED0029201870-S	AIR B. HOOD	1		
4			ED0097301070-S	SCREW	2		
6			ED00588R0850-S	SHROUD	1		
7			ED0097310920-S	ALLEN SCREW	2		
8			ED0076250120-S	WASHER	2		
9			ED0032030770-S	NUT	1		
10			ED0076250520-S	WASHER	1		
11			ED00589R0200-S	BULKHEAD	1		
12			ED00926R0780-S	TIE ROD	1		

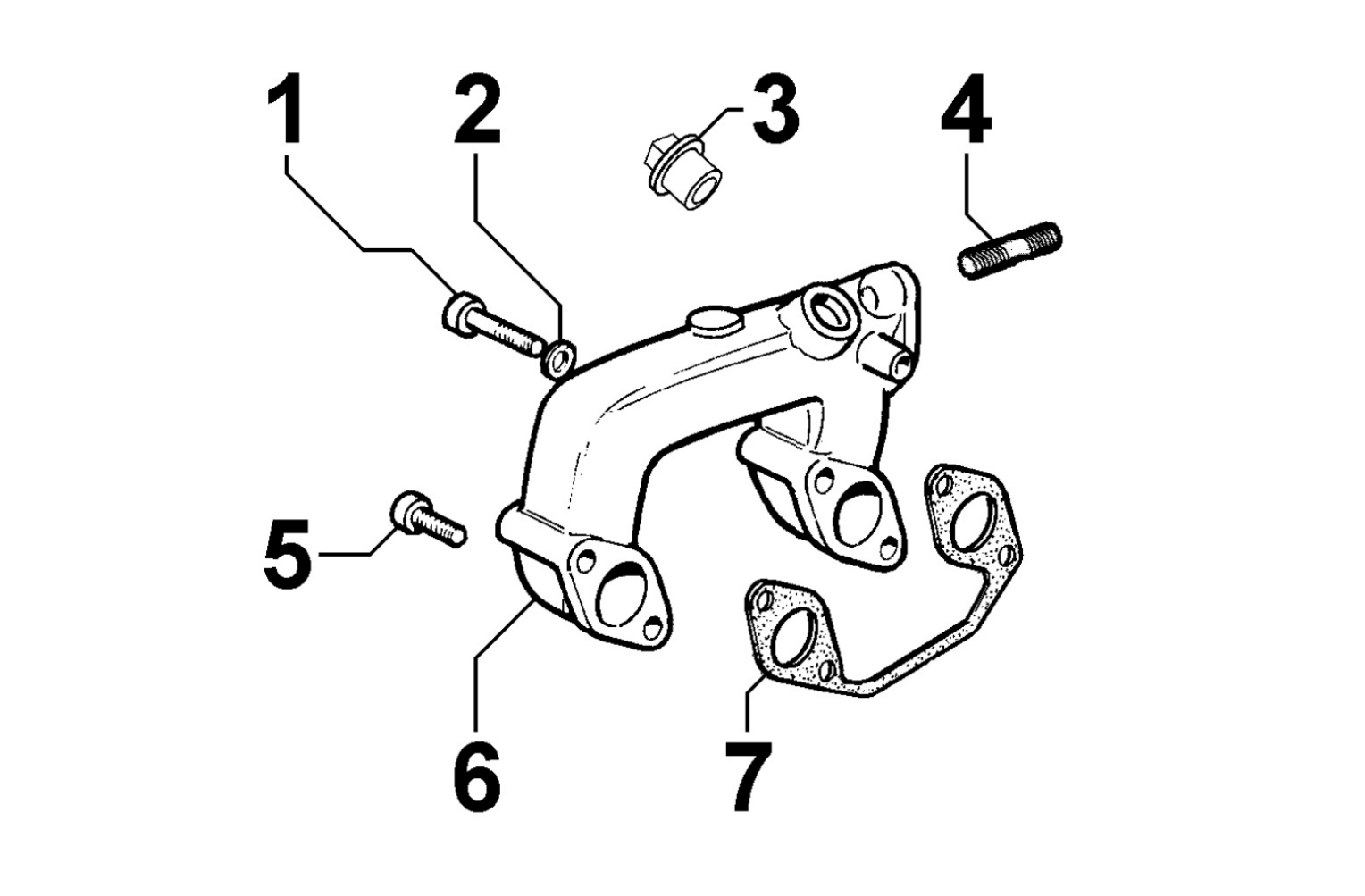
8078250080 - OIL RADIATOR / OIL COOLER



Pos	Kit	Included In	Code	Description	Qty	Old Code	Tech. Info
1			ED00717R0900-S	UNION	2		
2			ED0046700600-S	C.GASKET	5		
3			ED0094853780-S	PIPE FOR OIL RADIATOR	1		
4			ED00355R0500-S	SPACER	2		
5			ED0073504470-S	OIL RADIATOR	1		
6			ED0076260510-S	WASHER	1		
7			ED0097301070-S	SCREW	2		
8			ED0076250080-S	WASHER	2		
9			ED0094853790-S	PIPE FOR RETURN OF OIL RADIATOR	1		
10			ED0019011930-S	BOLT	1		
11			ED0046700360-S	GASKET	2		
13			ED00717R0910-S	UNION	1		
14			ED00754R0380-S	WASHER	2		



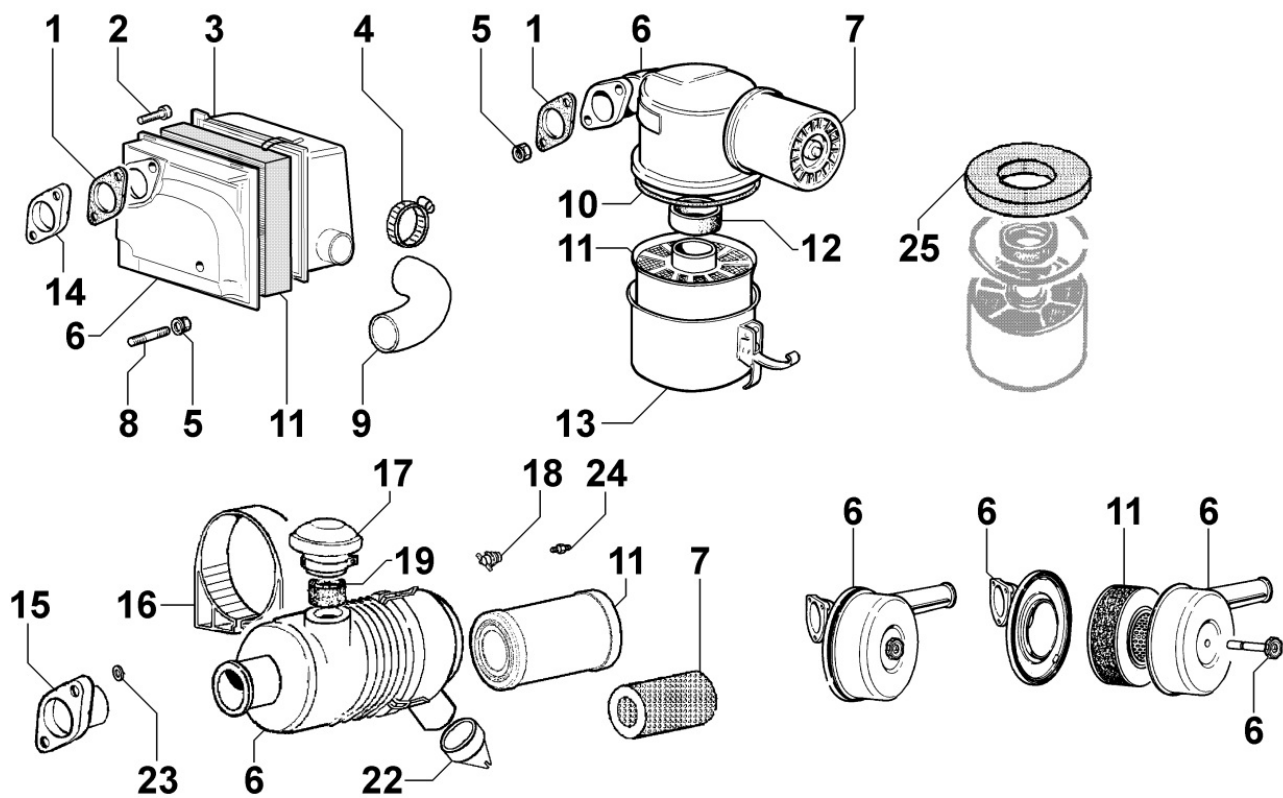
8080250100 - AIR INLET MANIFOLD / AIR FILTER



Pos	Kit	Included In	Code	Description	Qty	Old Code	Tech. Info
1			ED0097300340-S	CAPSCREW	2		
2			ED00771R0110-S	WASHER	4		
4			ED0067800680-S	STUD	2		
5			ED0097320630-S	CAPSCREW	2		
6			ED00211R0590-S	MANIFOLD	1		
7			ED0044200970-S	GASKET	1		

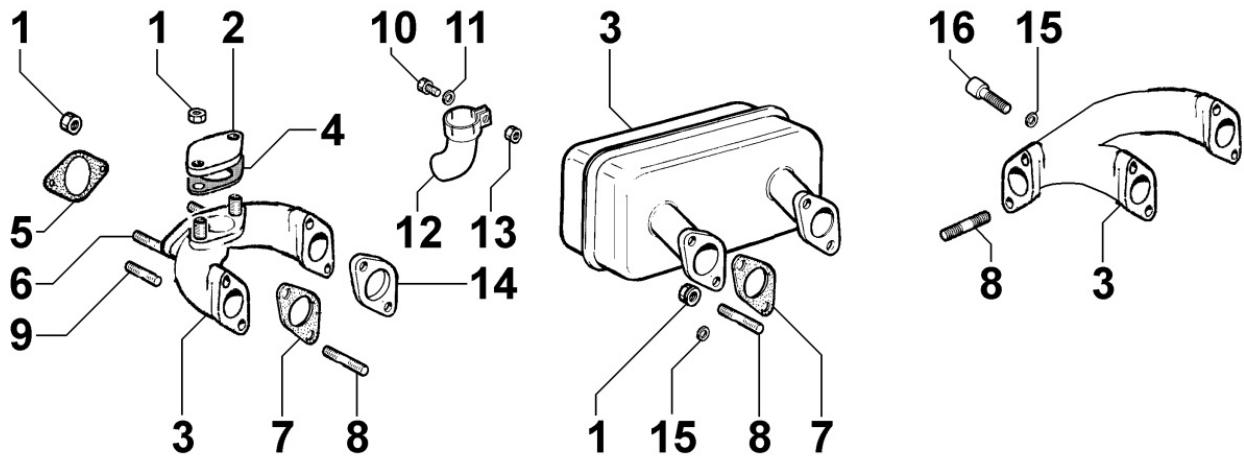


8081250260 - AIR CLEANER



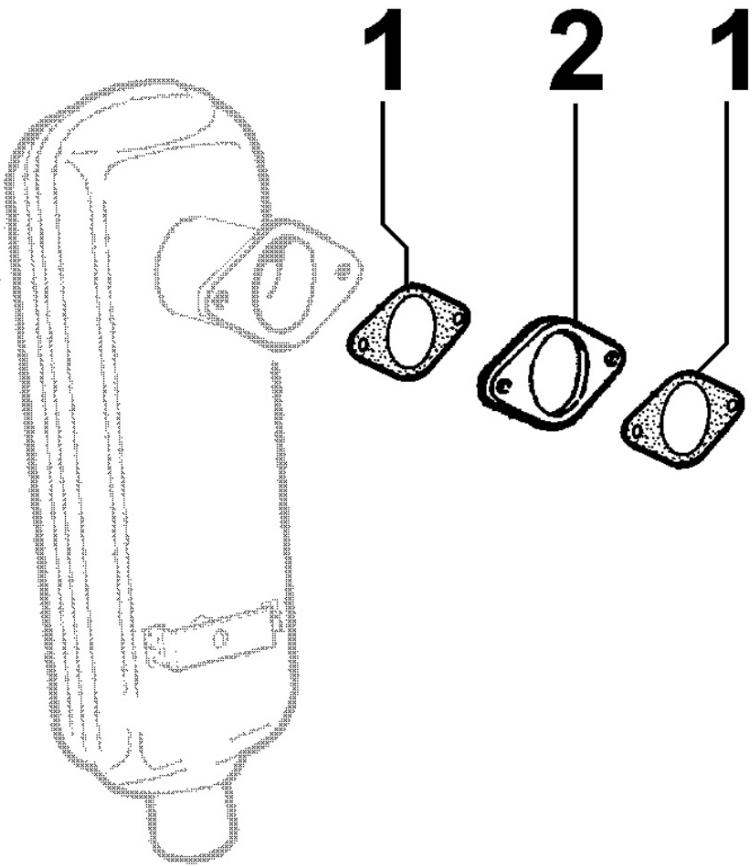
Pos	Kit	Included In	Code	Description	Qty	Old Code	Tech. Info
1			ED00450R0350-S	GASKET	1		
5			ED0032400210-S	HEX.NUT	2		
6	(A)		ED00389R0230-S	FILTRO ARIA/AIR FILTER	1		
10		(A)	ED00579R0730-S	RING	1		
11		(A)	ED00359R0300-S	FILTER	1		
12		(A)	ED00451R0060-S	GASKET	1		
13		(A)	KDISC.		1	ED00252R0320-S	

8085250050 - EXHAUST GAS MANIFOLD



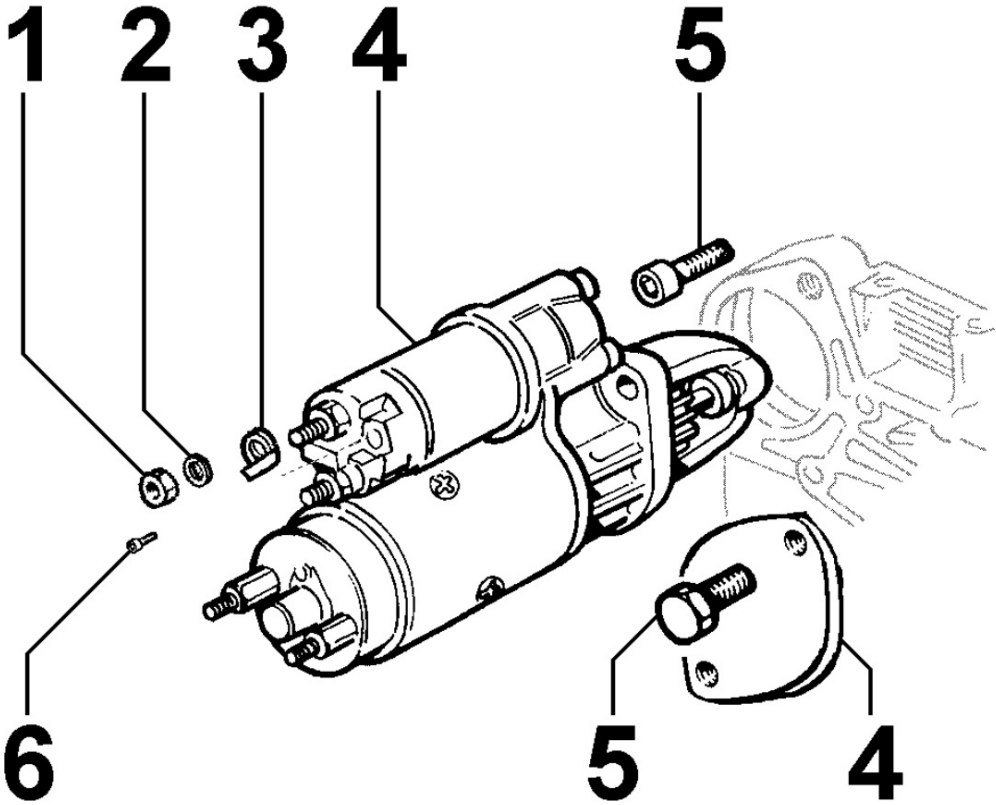
Pos	Kit	Included In	Code	Description	Qty	Old Code	Tech. Info
1			ED0032401630-S	HEX.NUT M8	8		
2			ED00399R0750-S	FLANGE	1		
3			ED00215R0480-S	EXHAUST MANIFOLD	1		
4			ED00450R0350-S	GASKET	1		
6			ED0067800850-S	STUD	4		
7			ED00451R0240-S	GASKET	2		
8			ED0067800680-S	STUD	4		

8087250020 - EXHAUST GAS ACCESSORIES



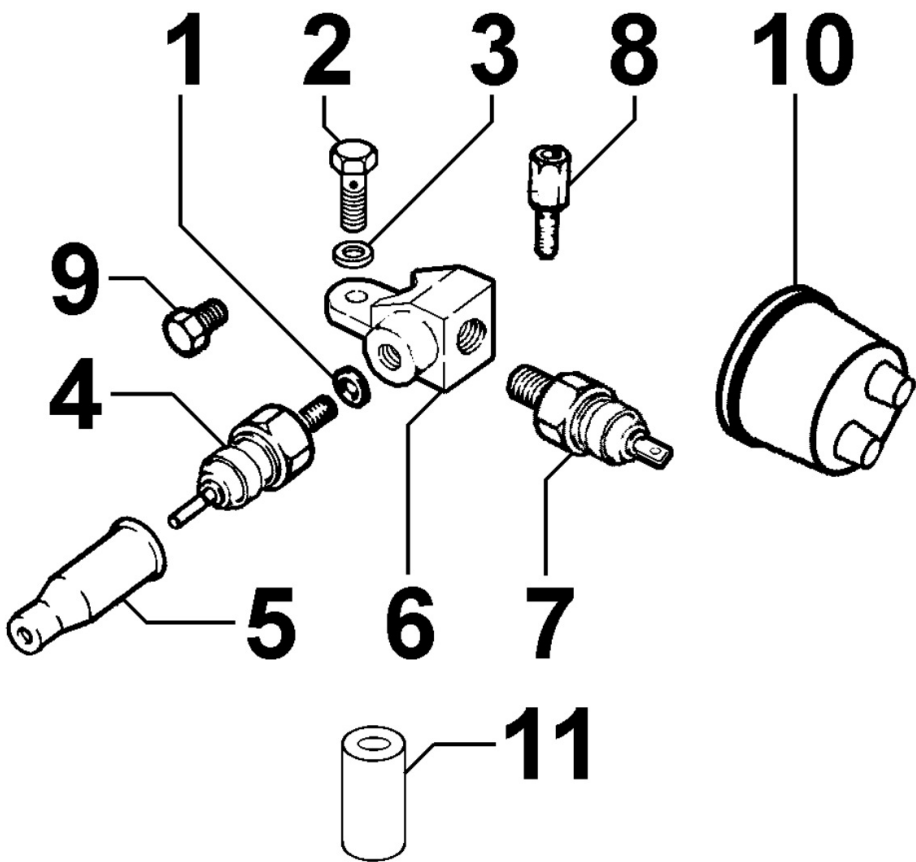
Pos	Kit	Included In	Code	Description	Qty	Old Code	Tech. Info
1			ED0044900990-S	GASKET	1		
2			ED00399R0030-S	FLANGE WITH HOLE D.35 INTAKE-ESCAPE	1		

8101250040 - STARTING MOTOR



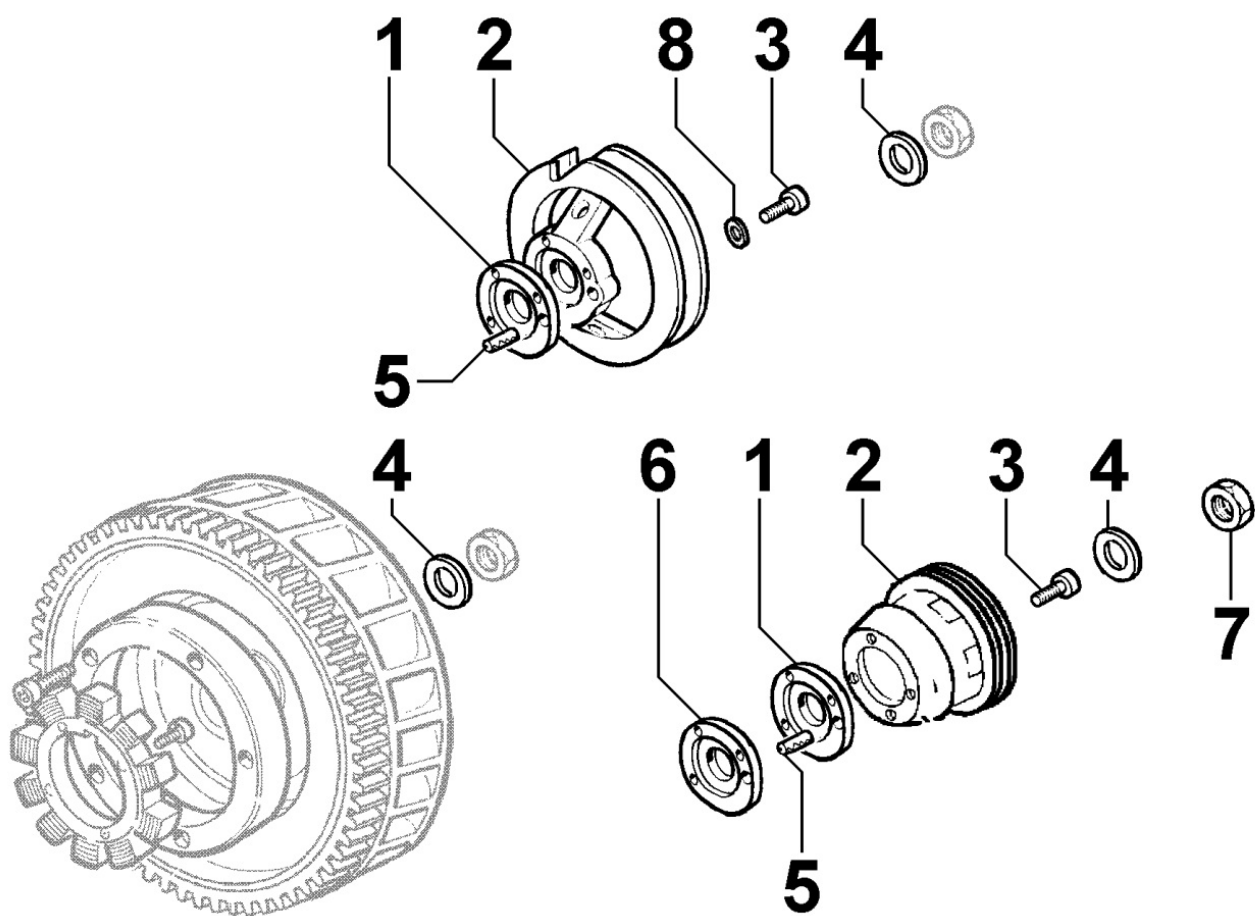
Pos	Kit	Included In	Code	Description	Qty	Old Code	Tech. Info
1			ED0032400160-S	HEX.NUT	1		
2			ED00763R0020-S	WASHER	1		
3			ED0091801680-S	FASTON TERMINAL FOR TAB AMP 140793	1		
4			ED0058402110-S	STA.MOTOR	1	ED0058401410-S	
5			ED0097300450-S	ALLEN SCREW	2		
6			ED0097900030-S	SCREW	1		

8102250020 - OIL PRESSURE SWITCH



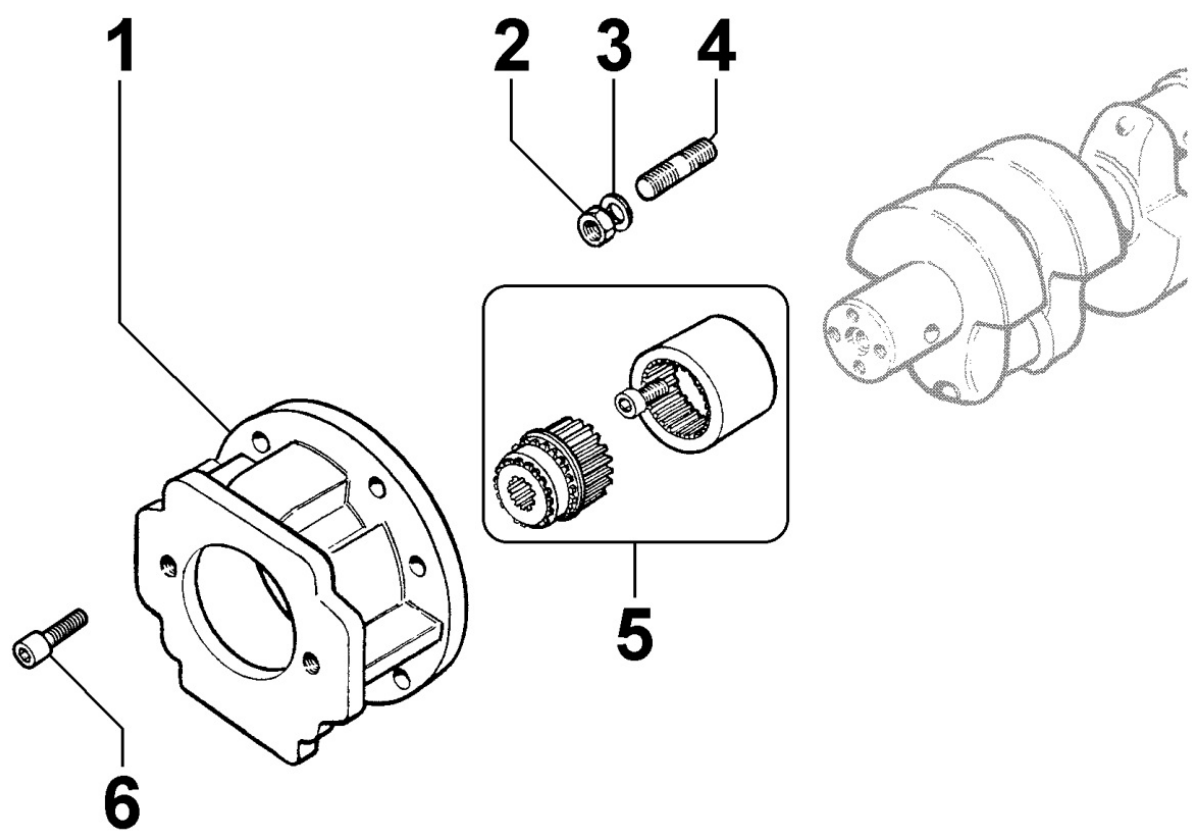
Pos	Kit	Included In	Code	Description	Qty	Old Code	Tech. Info
1			ED0046700580-S	COPPER GASKET	1		
4			ED00674R0010-S	OIL PRESSURE SWITCH	1		
5			ED0064910130-S	PIPE ELBOW	1		

8110250040 - STARTING



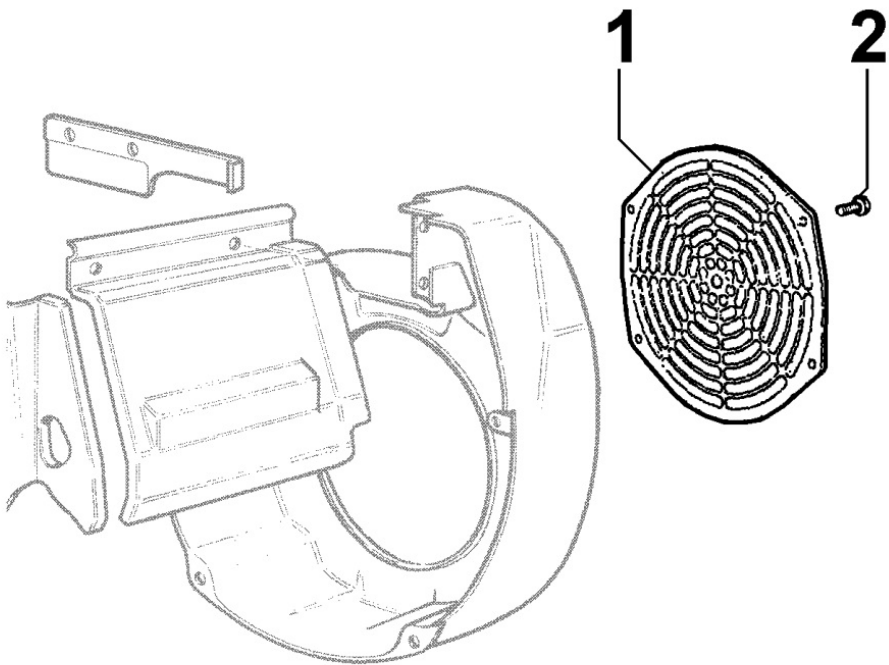
Pos	Kit	Included In	Code	Description	Qty	Old Code	Tech. Info
4			ED0076252980-S	RONDELLA/WASHER	1		

8130250240 - HYDRAULIC PUMP ADAPTER ON 1st PTO



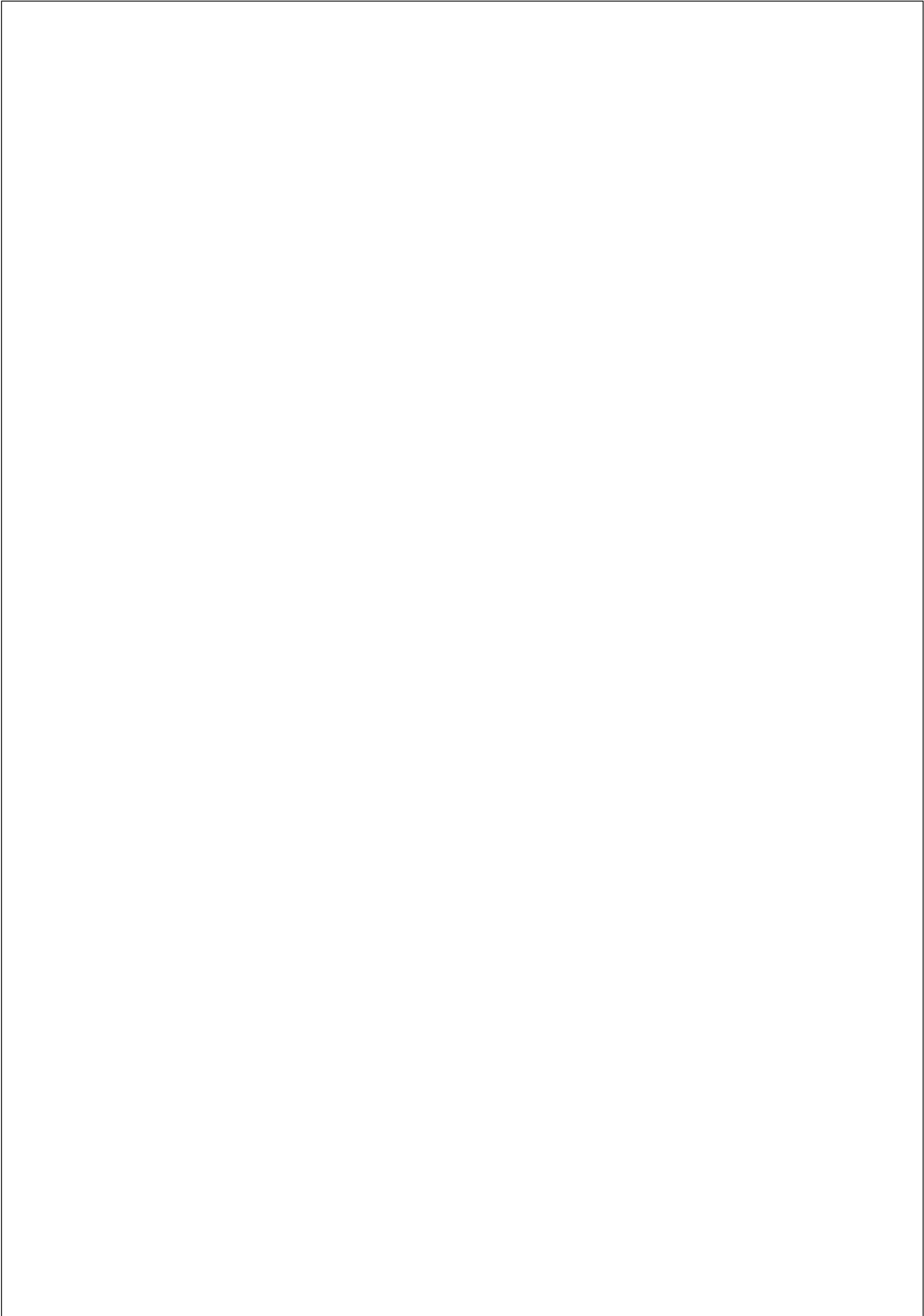
Pos	Kit	Included In	Code	Description	Qty	Old Code	Tech. Info
1	(A)		ED00446R0830-S	POMPA IDR./HYDRAULIC PUMP	1		
2			ED0032400160-S	HEX.NUT	6		
3			ED0076250120-S	WASHER	6		
4			ED00676R0140-S	STUD BOLT	6		
5		(A)		POS. 1			
6			ED0097320630-S	CAPSCREW	4		

8170250100 - FLYWHEEL PROTECTION



Pos	Kit	Included In	Code	Description	Qty	Old Code	Tech. Info
1			ED0069250090-S	GUARD	1		
2			ED00998R0130-S	SCREW	4		





KOHLER®  
ENGINES