



The machine is formed by a tilting arm being by means of a pneumatic spring, said arm being fitted through an intermediary union to a radial arm being revolvable around 360°.

The assembly is secured to the workbench by means of a base plate being provided with a post clearing the whole table area. The motor head finds itself at the end of the tilting arm and is apt to always move at right angles with respect to its working area.

The motor speed and the tool automatic lubrication can be adjusted by means of a display placed on the cover of the electronic board case.



The **modular system** is apt to be fitted to the electronic motor and consists of a 5 quick-change planetary speed reducers giving 5 different speeds and torques. The speed can be thus adapted to every thread type.

The tool holders (or tap adaptors) with or without safety clutch are also apt to be fitted to the modules by means of a quick-change system.

MODULAR SYSTEM: A range of 5 modules (speed reducers) can be coupled to the quick-change of the motor to make available 5 different tool rotational speeds.



High Frequency Electric Motor:

Power: 1000 W

Max. Torque: 185 Nm (75 rpm)

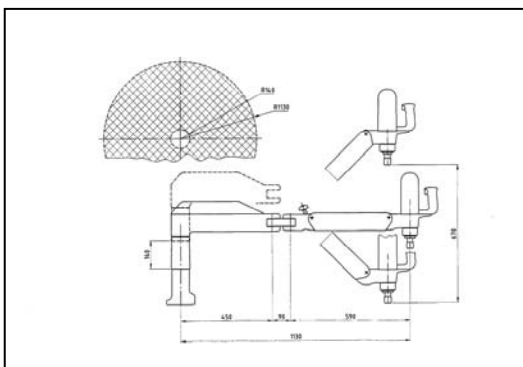
Power supply:

Single-phase 220 – 240 V 50/60 Hz.

Highest speed: 900 rpm

Módulo	Max. Speed (rpm)	Max Torque (Nm)	Ø Coupl.	Alumin. 100 HB	Steel <90Kg	Steel 90-115 Kg.
75	75	185	Ø31	(M33)	M27	M27
140	140	95	Ø31	M27	M22	M22
320	310	44	Ø19	(M20)	M16	M16
500	480	28	Ø19	M16	M12	M12
900	900	15	Ø19	M10	M8	M6

For the sizes in brackets, we should dress the tap Sank dimension (Ø) and the driving cube (□) (to fit the tapholder's size) or order a special module with the upper type coupling diameter.

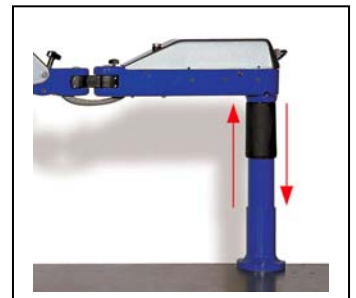


Working area

Radius: 1215 mm

High: 715(815) mm

LIFTER: We can increase the working area in 140 mm in order to work on different height levels.



AUTOMATIC TAP LUBRICATION

Inside the arm the cutting oil reservoir is located. This is used for lubricating the tool during the tapping operation. The lubrication time is adjusted by means of a display control placed on the cover of the electronic board case.



The **ROSCAMAT-6000 C63**, is supplied with an articulated head of easy handling which allows us to position the motor in vertical or horizontal position.

WORKING AREA:

Radius: 1405 mm.

High: 715 (815 mm.)

