

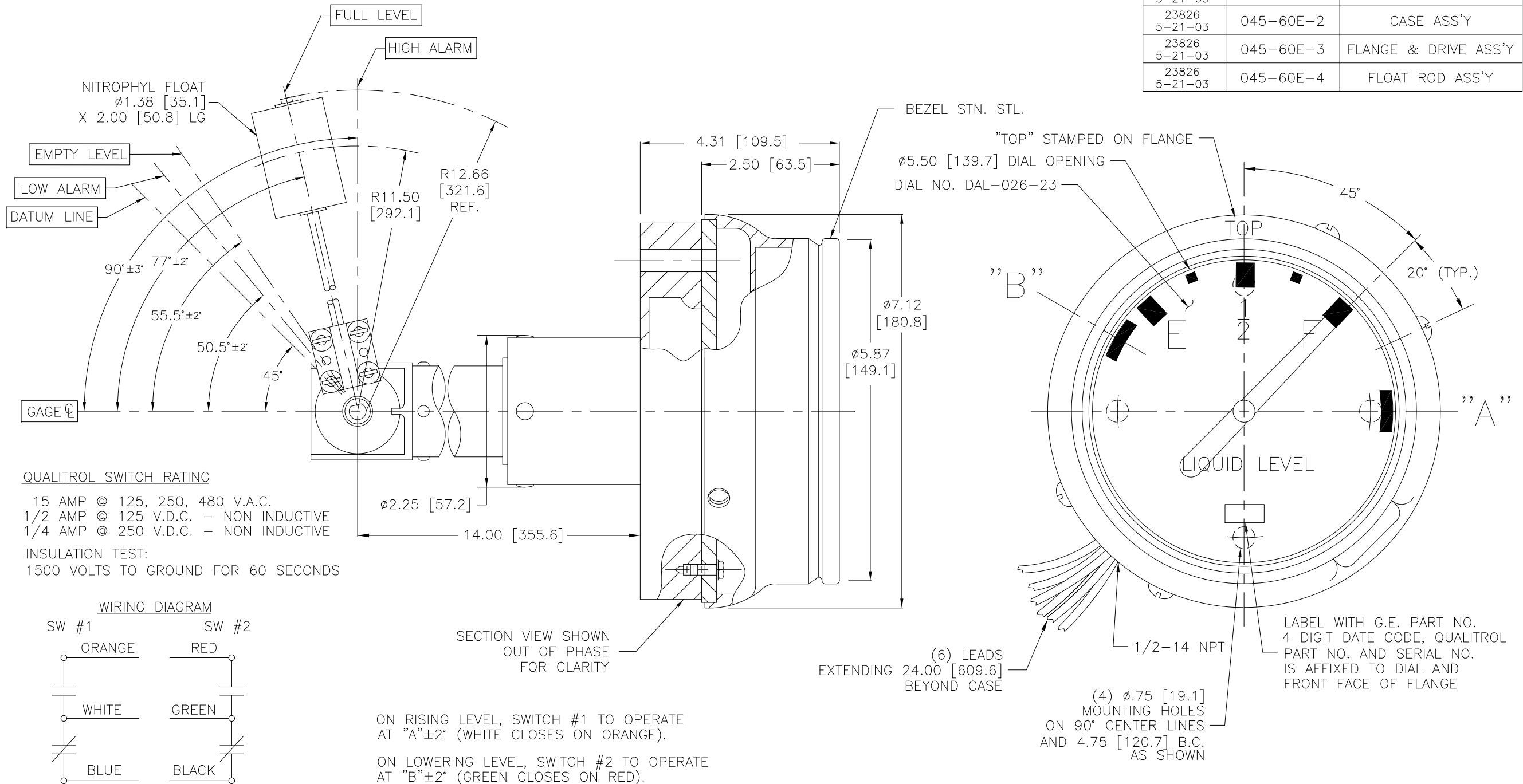
NOTICE
THIS DRAWING IS THE PROPERTY OF Qualitrol Corporation and is loaned only on the condition that it will be used to facilitate the purpose for which intended and not be reproduced, copied or otherwise disposed of, and is not to be used in whole or part for furnishing information relative to the making of drawings, parts apparatus or parts thereof, except by written order from Qualitrol Corporation.

MODEL NO. 045-60E

ALL DIMENSIONS FOR REFERENCE ONLY AND ARE IN INCHES [MILLIMETERS]
CASE ASSEMBLY: MUST BE SEALED AGAINST DUST AND MOISTURE
DIAL: BLACK CHARACTERS ON A WHITE BACKGROUND
POINTER: BLACK
LENS: UV STABILIZED ACRYLIC
CASE: ALUMINUM, PAINTED ASA 70 LIGHT GRAY EPOXY
FLANGE: ALUMINUM
CUSTOMER PART NO. (256A1072-23) TO BE MARKED ON OUTSIDE OF GAGE CARTON
GEAR RATIO = 4:1

THIS UNIT IS DESIGNED IN ACCORDANCE WITH U.L. 1203, CLASS 1, GROUP D.
FLOAT ROD ASSEMBLY TO BE SHIPPED UNASSEMBLED FROM UNIT.
(PLACE SCREWS AND WASHERS IN BAG AND TAPE TO FLOAT ROD).
POINTER AND SWITCH CALABRATIONS TO BE ESTABLISHED FROM DATUM LINE.

REVISION	PART NO.	DESCRIPTION
23826 5-21-03	045-60E	COMPLETE GAGE
23826 5-21-03	045-60E-2	CASE ASS'Y
23826 5-21-03	045-60E-3	FLANGE & DRIVE ASS'Y
23826 5-21-03	045-60E-4	FLOAT ROD ASS'Y



-	5-21-03	CORRECTED CHARTED PART NUMBERS	23826
-	6-3-02	FLOAT GEARING CHANGED; REDRAWN ON CAD	22946
J	10-21-92	ADD LABEL & NOTE; REV. INK STAMP NOTE	15591
LET	DATE	ALTERATION	C.N.

QUALITROL
CORPORATION
DIMENSIONS AND TOLERANCES IN ACCORDANCE WITH ASME Y14.5M-1994

PH. (716) 586-1515
FAX (716) 377-0220
1385 FAIRPORT ROAD
FAIRPORT, NY 14450
FORM 0-473 REV.C 7/1/97

TITLE: 6" LIQUID LEVEL GAGE
FOR HAZARDOUS LOCATION
MODEL NO. 045-60E