

K10 Electro-Pneumatic Positioner

Non-incendive or Intrinsically Safe – NEC

WESTLOCK
CONTROLS

The K10 is an electro-pneumatic positioner providing fast, automatic calibration via a simple push button procedure.



Features

- Advanced auto-calibration takes care of positioner gain settings, zero, span and internal adjustments.
- Certified Non-incendive or Intrinsically Safe.
- Strong, durable Westlock Beacon offers 360° display clearly visible from up to 150 feet.
- Optional end-of-travel limit switches or 4-20 mA feedback transmitter available.
- Negligible-bleed lapped spool and matched sleeve design delivers significant energy savings.
- Corrosion resistant engineered resin NEMA 4, 4X enclosure.
- Optional high flow transducer.
- Optional high flow spool valve can reduce the need for volume boosters on larger actuator applications.

Technical Data

Agency approvals

Area classification (NEC 500)

Non-incendive	Class I, Division 2, Groups A, B, C & D/ T4 Class II & III, Division 2, Groups F & G
Intrinsically Safe	Class I, II & III, Division 1, Groups A, B, C, D, E, F & G/ T4

Enclosure standards (ANSI/NEMA 250)	Type 4, 4X
-------------------------------------	------------

Enclosure

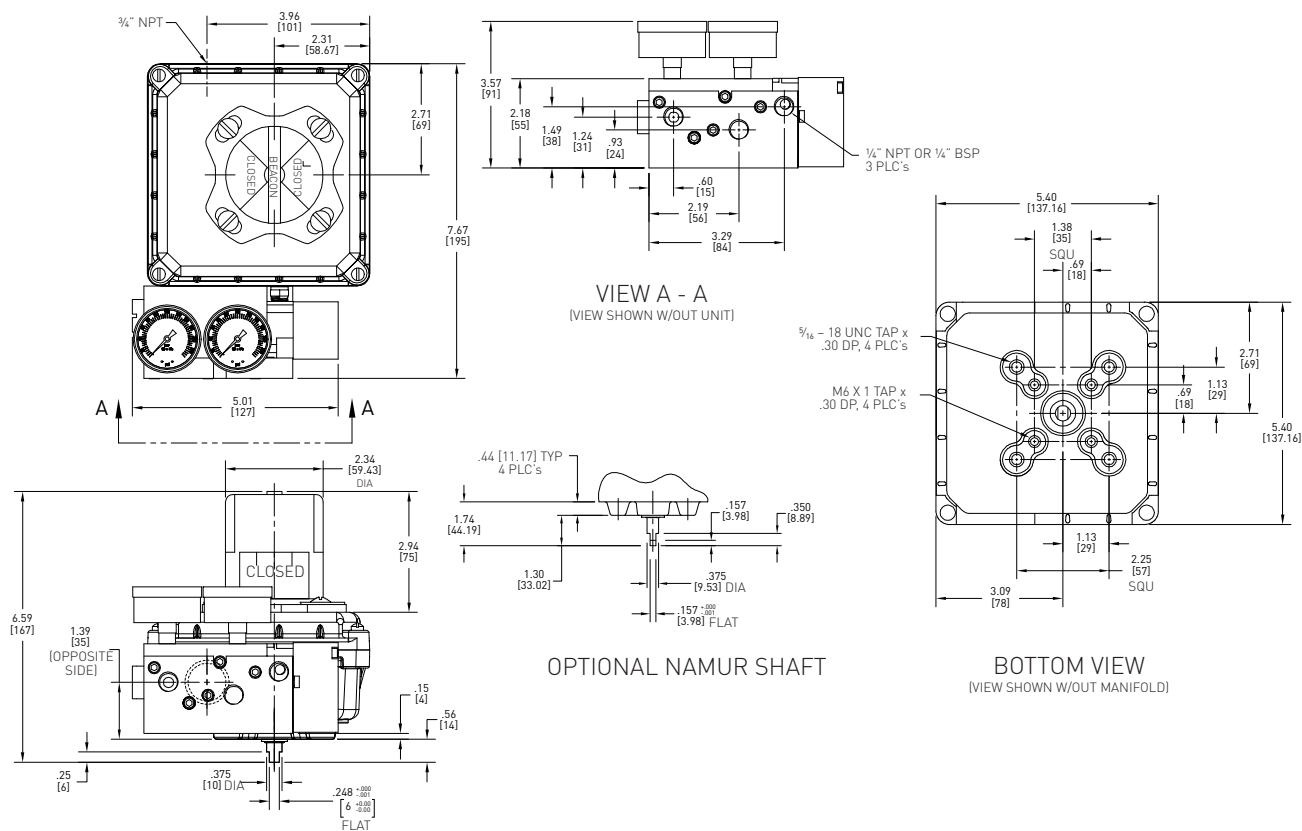
Engineered resin



K10 Electro-Pneumatic Positioner

Non-incendive or Intrinsically Safe

Dimensions



Dimensions in inches, where available metric dimension (mm) in parentheses.

Technical specifications	
Input current	4-20 mA (analog)
Voltage drop	9 V
Supply air pressure	(low) 15 to 45 psi, (high) 40 to 120 psi
Resolution	0.5% of span
Linearity	±1% of span
Hysteresis	0.4% of span
Repeatability	0.4% of span
Thermal coefficient	[2%/100°C]
Output flow rates	(low) 8.0 scfm @ 25 psi, (high) 16.2 scfm @ 90 psi
Air consumption	(low) 0.03 scfm @ 25 psi, (high) 0.08 scfm @ 90 psi
Gain	Electronically adjustable
Air connection ports	1/4" NPT
Materials of construction	
Housing	Engineered resin
Cover	Clear engineered resin
Manifold	Anodized aluminum
Conduit	Stainless 3/4" NPT
Shaft	Stainless steel
Hardware	Stainless steel

Micro-Switch V3		
SPDT (V3)		
A	V AC	V DC
15	125	
15	250	
6		24
0.50		125
0.25		250

K10 Electro-Pneumatic Positioner

Selection Guide

Base model

K10 Electro-pneumatic positioner [4-20 mA input positioner, engineered resin enclosure with one ¼" NPT (F)]

Area classification

- N Non-incendive
- I Intrinsically Safe

Shaft output

- S Standard (Double-D with ¼" Flats)
- N NAMUR

Supply pressure

- H High pressure (40 - 120 psi)
- L Low pressure (15 - 45 psi)
- V High flow (40 - 120 psi, for large actuators)

Manifold material

- 0 Aluminum

Output options

- 0 No Option
- B Two SPDT mechanical switches*
- E 4 - 20 mA transmitter (available in Non-incendive only)

Filter option

- F ¼" NPT with filter-regulator assembly (¾" NPT with high flow option)

K10 N N L 0 E F = Model number **K10NNL0EF**

* This option does not have Non-incendive or Intrinsically Safe approval so units with this option must only be used for general purpose applications.

Notes

Specifying your positioner

Specifying a positioner is a complex process as there are many variables, which affect each application. To ensure you receive the best possible positioner for your application, please contact your local sales office for advice and guidance from one of our experts.

Hazardous area classification

Please see our data sheet for further information on the global standards affecting the specification and installation of equipment in hazardous areas.

US/Canada: Saddle Brook, NJ

Ph: +1 201 794 7650

Fax: +1 201 794 0913

E-mail: westlockinfo@westlockcontrols.com

South America: Sao Paulo, Brazil

Ph: +55 11 2588 1400

Fax: +55 11 2588 1410

E-mail: comercial@westlock.com.br

Europe: Kent, England

Ph: +44 1892 516277

Fax: +44 1892 707620

E-mail: sales@westlockuk.com

Asia: Singapore

Ph: +65 6768 5850

E-mail: sales@westlockuk.com