

ITEM 090559 TZ2LE024M

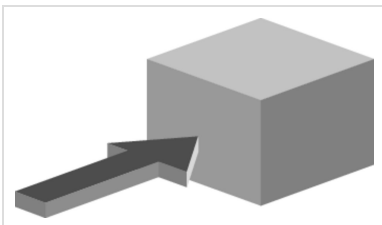
Description	Technical data	Accessories	Downloads
-------------	----------------	-------------	-----------



### Features

- › Auxiliary release on the front
- › Two LED indicators, red and green
- › Actuating head fitted left

### Approach direction



- › Figure  
Horizontal  
Can be adjusted in 90° steps

### Solenoid operating voltage and LED function display

- › 24 V AC/DC -15%, +10%

## Guard locking type

**TZ2** Open-circuit current principle, guard locking by applying voltage to the solenoid. Release by spring force.

## Switching element

**SK** For monitoring the door/actuator position

**ÜK** For monitoring the guard locking (built-in solenoid)

**528H** Slow-action switching contact 1 NC $\ominus$  + 1 NO

## Auxiliary release

Is used for releasing the guard locking with the aid of a tool. A sealing wire can be fitted to protect against tampering. Lead seal kit and tool included (already pre-assembled on versions with plug connectors).

## Approvals



## Mechanical figures and environment

Housing material	Anodized die-cast alloy
Ground	
Net	1,2 kg
Ambient temperature	-25 ... 80 °C
Degree of protection	IP67
Mechanical life	1 x 10 <sup>6</sup>
Contact material	Silver alloy, gold flashed
Switching principle	Slow-action switching contact
Installation position	Any
Number of door position positively driven contacts	1
Number of door position NO contacts	1
Number of guard lock monitoring positively driven contacts	1
Number of guard lock monitoring NO contacts	1
Connection	
1 x	M20 x 1.5
Approach speed	max. 20 m/min
Actuation frequency	1200 1/h
Guard locking principle	Open-circuit current principle
Locking force F <sub>max</sub>	2000 N
Locking force F <sub>Zh</sub> (in accordance with GS-ET-19)	1500 N

Retention force	10 N
Extraction force	30 N
Actuating force	35 N
Insertion depth	min. 52 mm
Cover	Black

### Electrical connection ratings

Thermal rated current $I_{th}$	4 A <sup>[1]</sup>
Utilization category acc. to EN 60947-5-1	
AC-15	4A 230V <sup>[2]</sup>
DC-13	4A 24V <sup>[3]</sup>
Solenoid operating voltage	
AC/DC	24 V -15% ... +10%
Short circuit protection according to IEC 60269-1	
(Fuse)	4A gG <sup>[4]</sup>
Rated insulation voltage $U_i$	250 V
Rated impulse withstand voltage $U_{imp}$	2,5 kV
switching voltage	
Min. at 10mA	12 V
Switching current	
Min. at 24V	1 mA
Power consumption	10 W
Solenoid duty cycle	100 %
Connection cross-section	0,34 ... 1,5 mm <sup>2</sup>
LED indicator	Operating voltage corresponds to the solenoid voltage <sup>[5]</sup>

### Reliability values according to EN ISO 13849-1

	<b>Monitoring of guard locking and the safety guard position</b>
B10 <sub>d</sub>	$3 \times 10^6$

### In combination with Actuator BETAETIGER-Z-G

#### Mechanical figures and environment

Overtravel	4 mm
------------	------

### In combination with Actuator BETAETIGER-Z-GN

#### Mechanical figures and environment

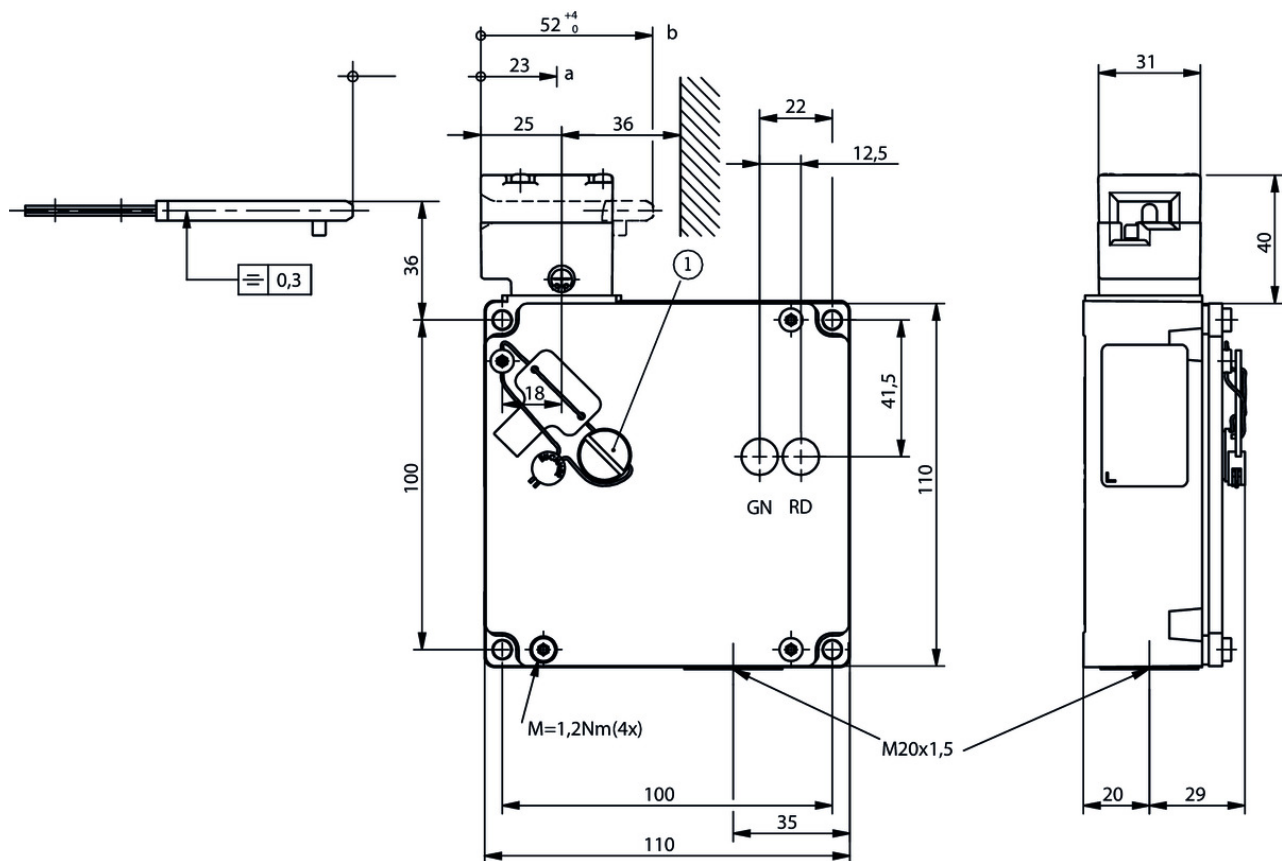
Overtravel	16 mm
------------	-------

[1, 2, 3]  $>70^{\circ}\text{C} \Rightarrow 2\text{A}$

[4]  $>70^{\circ}\text{C} \Rightarrow 2\text{A gG}$

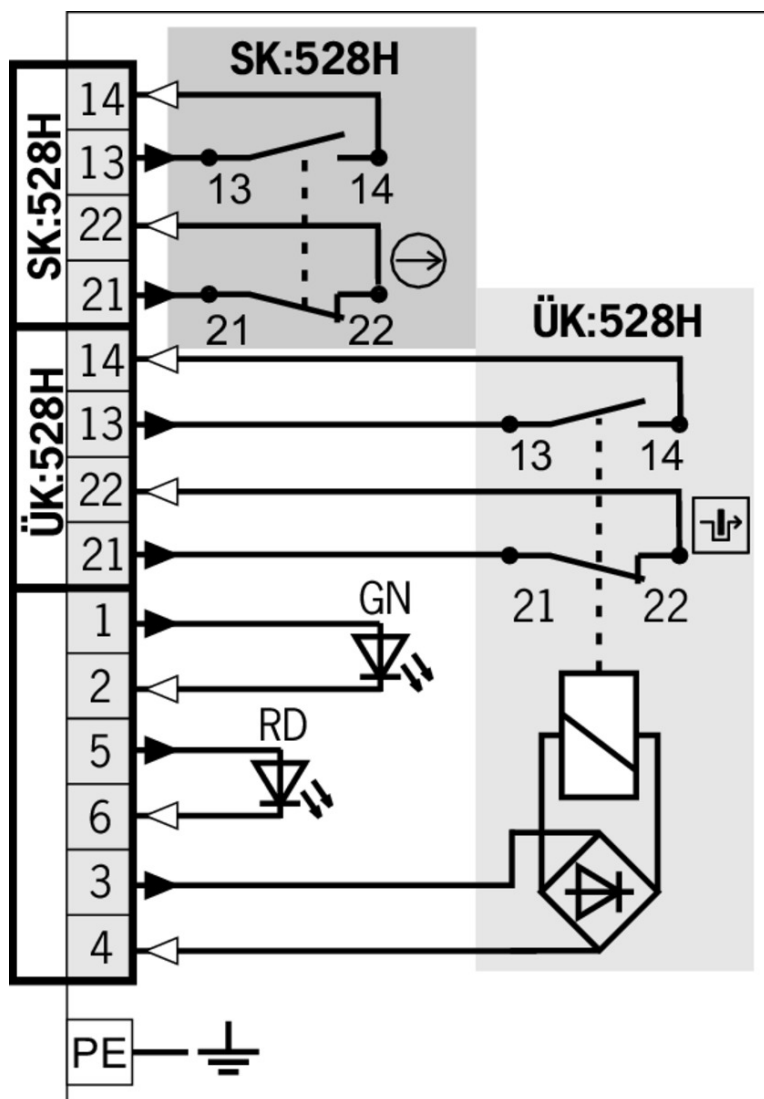
[5] 2 LEDs; green, red

## Dimension drawing



## Legende

1 Auxiliary release



### Legende

- Solenoid monitoring
- Door monitoring

Switching functions

