

DEPA Air Operated Diaphragm Pumps

Series P

Plastic Pumps Type DL15-PM, DL25-PM, DL40-PM

The new pump generation PM is a further development of DEPA's proven and successful polypropylene pumps series.

The development offers a combination of modern industrial design combined with the daily requirements of pumps, like temperature, chemical resistance and high mechanical strength.

The computer-aided design of the injection moulding achieves a constant high quality with excellent surface finish for low flow resistance and good abrasion resistance.

The result of the new design offers a strong and compact type of construction.

These new DEPA pumps have all the advantages of Air Operated Diaphragm pumps, dry running, self-priming, gentle product handling and the ability to stall against closed discharge lines.

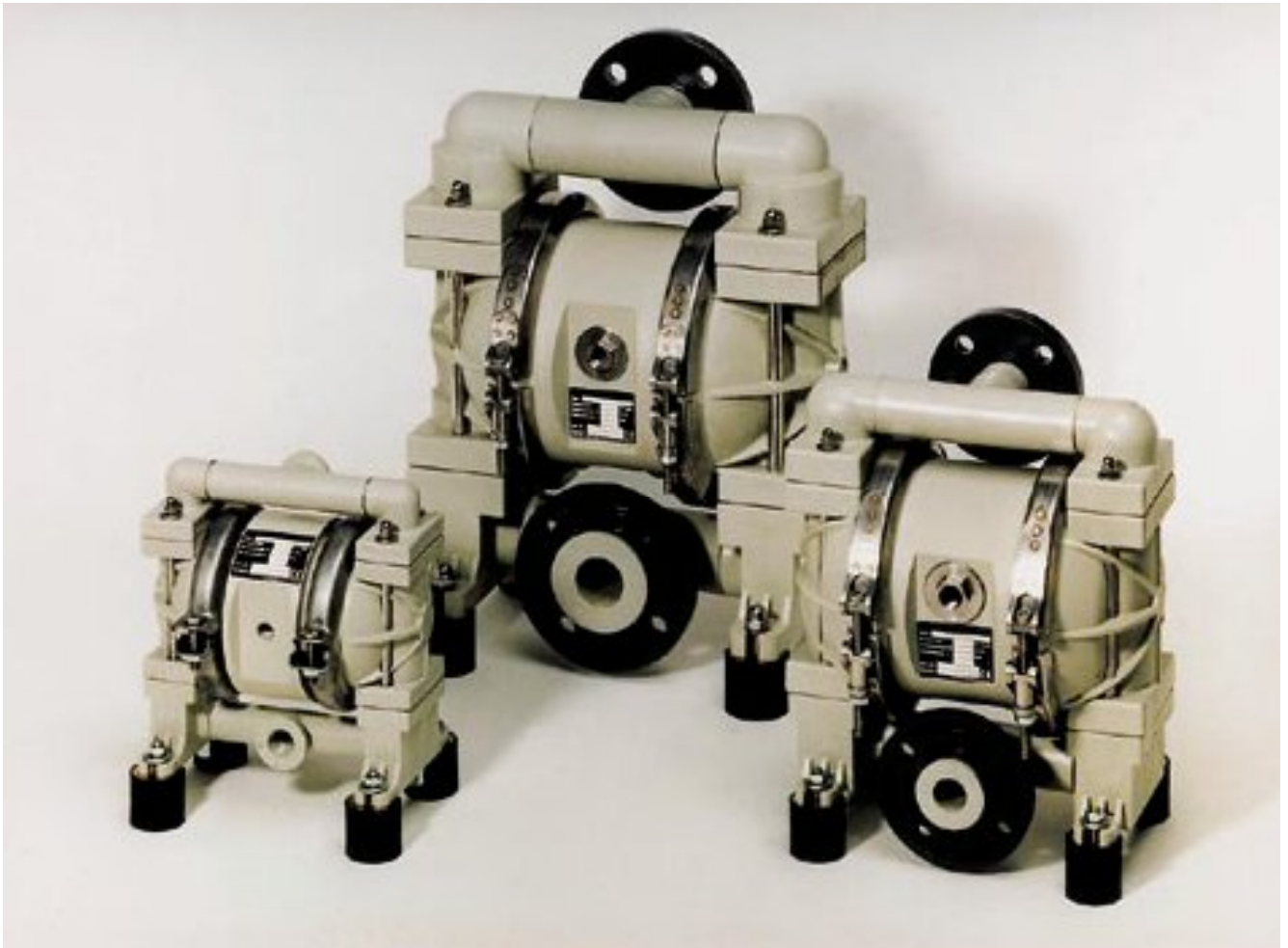
Various options allow a wide variety of applications for the pumps.

Internal and external air valves, ANSI, DIN and JIS flanges and screw connections are available.

For the product wetted parts (diaphragms, valve seats and valve balls) there are several elastomer materials available.

Flow rate max. 9 m³/h at max. 7 bar.

DE/DB-0005-GB / 09.01 / MD



DEPA Air Operated Diaphragm Pumps

Series P

Plastic Pump Type DL25-PM



Technical Specification

Product wetted parts

Housing material:

PPH injection moulded

Elastomer material:

NRS, NBR, EPDM, FKM, PTFE
for diaphragms, valve seats, balls

Suction and discharge
connection:

Standard PVC-Loose flange DN 25
DIN 2653, special options Combined
DIN/ANSI, ANSI-, JIS-Flange or R1" female thread

Non-wetted parts

Centrebloc material:

PP

Air valve internal:

brass, brass nickel plated

Air valve external:

coated

Clamp band:

1.4301

Product temperature max.:

60 °C

Suction lift max.:

4 m

Solid size max.:

Ø 4 mm

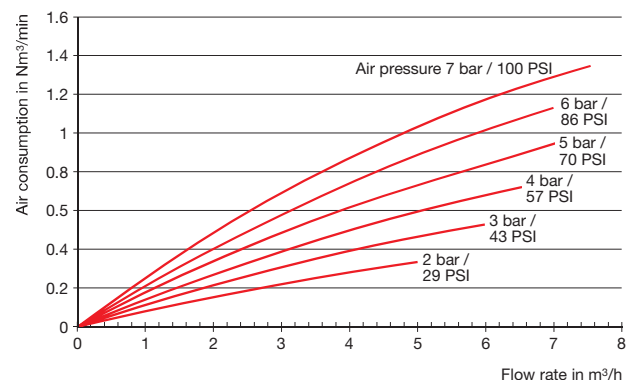
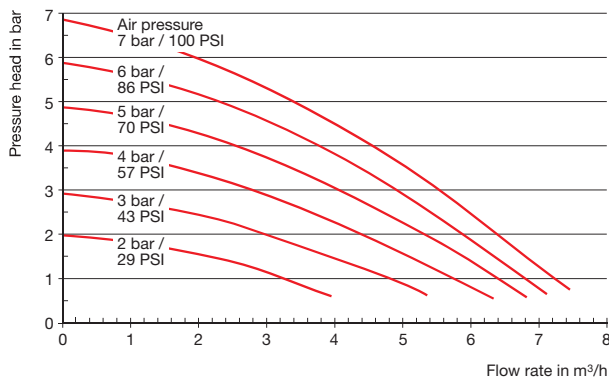
Pump weight:

8.4 kg

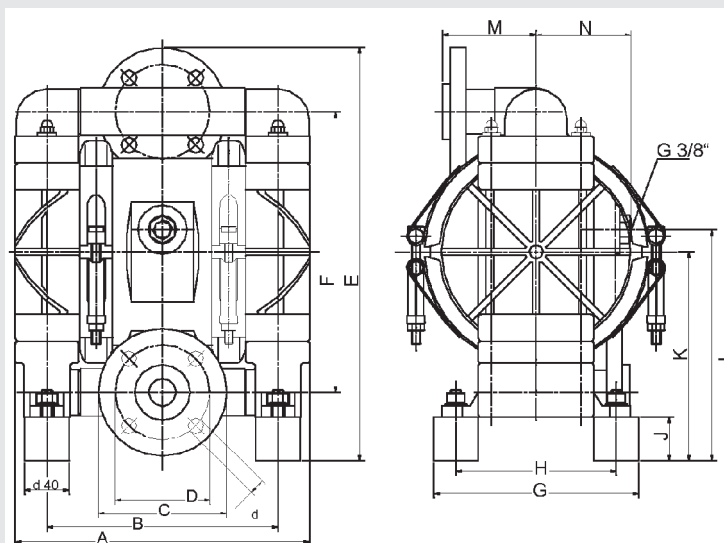
Flow rate:

6,6 m³/h at 7 bar max.

Performance curves



Dimension drawing



(Standard)

Dimensions in mm

A	264
B	287
C	Ø 115
D	Ø 85
E	372
F	252
G	184
H	144
J	40
K	188
L	208
M	84
N	85