

SimpliMet™ 3000

This versatile mounting press is designed for users with high variety in the lab. Create reproducible mounts of different sizes using a variety of protocols.



Reduce Complexity with Programmability

- Ideal for labs with multiple protocols and different mount types.
- Store and recall up to 5 different programs, reduce complexity and eliminate errors
- Flexibility for high variability labs
- Highly varying samples sizes can be optimized by selecting different mold sizes. Save on mounting media and improve mount quality

Part Number	Voltage/Frequency
20-1435	85-264VAC, 50/60Hz

Mold Assemblies

Molds are ordered separately, available in a variety of sizes and inter-changed easily.

Part Number	Size	Part Number	Size
20-2401	1 in	20-2403	1.5in
20-2405	25mm	20-2407	40mm
20-2402	1.25in	20-2404	2in
20-2406	30mm	20-2408	50mm

Dimensions: 16in [406mm]W x 21.5in [546mm]D x 22.5in [571mm]H

Support Clips & Clamps

Support clips are used to support specimens during mounting. The material, size and weight of the clips should be considered when choosing a clip for an application.

SampliKlip Support Clip



For use with all mounting systems.*

Material: Stainless Steel
Weight: 0.575g
Qty: 100
Size: 0.25 H x 0.550 W x 0.350in L
 [6 x 14 x 9mm]
Part Number: 20-4000-100

Specimen Support Clip



Best for castable mount systems.†

Material: Plastic
Weight: 0.145g
Qty: 1000
Size: 0.25 H x 0.290 W x 0.375in L
 [6 x 7 x 9.5mm]
Part Number: 20-4001-000

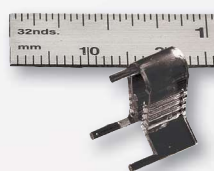
SampliKlip | Support Clip



Best for castable mounting systems.*

Material: Plastic
Weight: 0.230g
Qty: 100
Size: 0.25 H x 0.475 W x 0.3in L
 [~6 x 12 x 8mm]
Part Number: 20-4100-100
Size: 0.25 H x 0.425 W x 0.25in L
 [~6 x 11 x 6mm]
Part Number: 20-4100-100S

UniClip Support Clip



For use with all mounting systems. Orient with "legs" upward for compression mounting.†

Material: Plastic
Weight: 0.290g
Qty: 100
Size: 0.4 H x 0.360 W x 0.500in L
 [10 x 9 x 13mm]
Color: Clear
Part Number: 20-5100-100

Color: Black
Part Number: 113043

* Compatible with specimens up to 0.200in [5mm] thick

† Compatible with specimens between 0.0035 - 0.090in [0.9 - 2.3mm]