

Digital Position Indicator DA04

Lense function, attenuated counters, display in mm or inch – all these service features render this particularly small position indicator an indispensable instrument for small spindle distances.

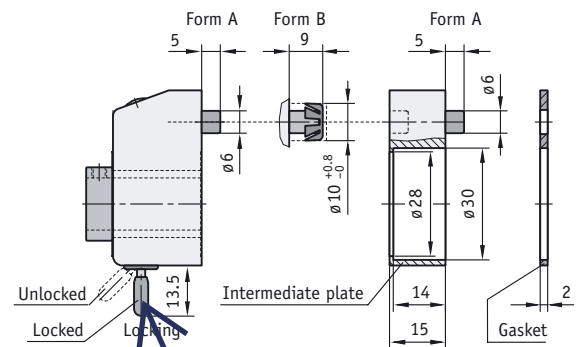
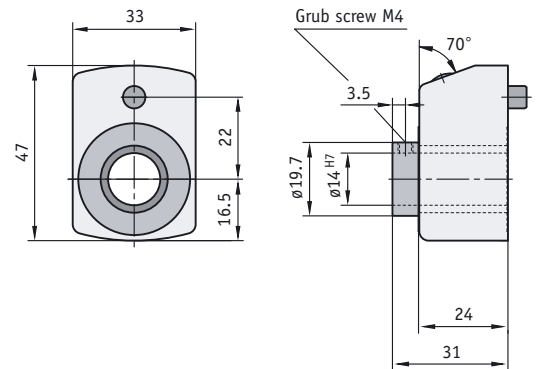


Features:

- intermediate plate for accommodation of adjustment rings and rotary shaft lip seals
- hollow shaft, max. diameter 14 mm
- axial seals (dustproof)
- clamping plate, see Accessories

Option:

- Nirosta driving shaft
- counter cover made of mineral glass, solvent-resistant
- reduction sleeves for various diameters



i not need this part

DA04

Display after the first revolution	max. velocity (min ⁻¹)
0010	500 (1.500)
0015	500 (1.000)
0020	500 (750)
0025	500 (600)
0030	500
0040	375
0050	300
0060	250
0080	180
0100	150

Caution: velocities > 500 min⁻¹ should be operated for a short while only.

Formula for max. velocity = $\frac{15.000}{\text{Display after the first revolution}}$

Display	Mounting position				Counting direction
<p>Fine reading</p>	<p>02</p>	<p>04</p>	<p>06</p>	<p>07</p>	

For the DA04, suitable reduction sleeves, an axial seal, a locking mechanism and intermediate plate are available (see Accessories)