



Constant-pressure regulator

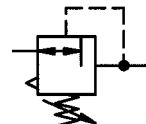
Size 2

737.401 to 737.404

G 3/8 (red.)

737.501 to 737.504

G 1/2



Characteristics

Order No.	737.501	737.502	737.503	737.504
Port	G 1/2			
Order No.	737.401	737.402	737.403	737.404
Port	G 3/8 (reduced)			
Pressure gauge port	G 1/4			
Type of construction	Diaphragm pressure regulator with self-relieving design			
	Special versions on request e.g. - Reverse flow port closed			
Max. input pressure p_1	25 bar			
Control range p_2	0.5 to 3 bar / 0.5 to 6 bar / 0.5 to 10 bar / 0.5 to 16 bar			
Mounting position	Any / note direction of arrow			
Mounting type	Panel mounting, hole Ø20.5 Bracket			
Medium temperature	-10 to 60°C			
Ambient temperature	-10 to 90°C			
Weight [g]	1250 / 1390 with pressure gauge			

Description

- Standard design
- Double nipples (G 1/2) required for block mounting with other devices
- Pressure setting by means of adjusting screw with plastic knob, setting can be locked with lock nut
- Flow direction indicated by arrows
- **Entry in direction of arrow**
- Working pressure remains virtually **constant, regardless** of system pressure fluctuations and air consumption
- Pressure gauge Ø63 included, can be mounted at both ends
- Panel mounting with nut and washer on cover
- Wall mounting with mounting bracket on cover

Materials

Part	Material
Head piece (body)	Zinc - Z 410
Spring bonnet/adjusting screw	Zinc - Z 410/brass
Diaphragm →	NBR-brass
Pressure spring	Galvanised steel
Valve cone →	NBR-brass
Counter-pressure spring	Stainless steel
O-ring 31 x 3 →	NBR

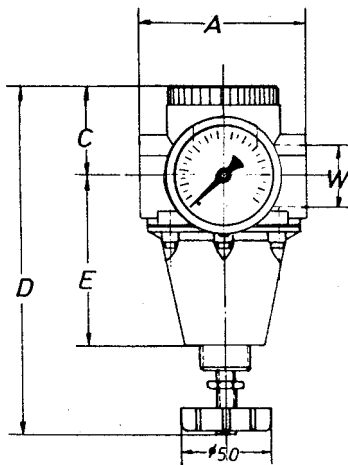
Accessories

Designation	Order No.
Nut M 20 x 1.5 and washer	74/1
Mounting bracket with nut and washer	75/2
Double nipple G 1/2	252.05
(R 1/2 conical) for block mounting with other devices	252.303
Reducing nipple G 3/8 male to G 1/4 female	251.02

Main spare parts

Part	Part No.
→ Set of wearing parts	22.753.4
- Diaphragm, compl.	
- Valve cone, compl.	
- O-ring 31 x 3	
Pr. gauge Ø63, G 1/4	
0 to 4 bar	215-KD
0 to 6 bar	216-KD
0 to 10 bar	217-KD
0 to 16 bar	218-KD

Dimensions



Dimensions [mm]

Port W	Dimensions					Mounting thread	Pr. gauge Ø		
	A	C	D	E	Adj. knob Ø		Ø		
G 1/2	82	32	170	85	50	M 20 x 1.5	G 1/4	63	
G 3/8 (red.)	90	32	170	85	50	M 20 x 1.5	G 1/4	63	

Flow rates

Flow rates at $p_1 > p_2 + 2 \text{ bar}$ / G 1/2 port

Art. No.		737.401 737.501	737.402 737.502	737.403 737.503	737.404 737.504
		QN m³/h	QN m³/h	QN m³/h	QN m³/h
Output pressure $p_2 = 6 \text{ [bar]}$	QN m³/h	210	180	160	120
Nominal flow ($\Delta p = 1 \text{ bar}$)	QN l/min	3500	3000	2670	2000