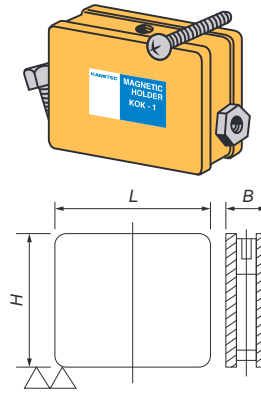


Model KOK ALL-CATCH



[Application]

Versatile holders having four attractive faces to meet various applications. These holders also have threaded holes to enable fixtures to be mounted for coupling of holders.

[mm (in)]

Model	Holding Power	Dimensions			Tapped Hole	Mass
		□	□	□		
KOK-1	200N (20kgf)	17.0 (0.66)	50	40	M5 0.19)× 0.8 0.03)	150g/ 0.33 lb
KOK-2A	300N (30kgf)	27.6 (1.08)			Depth, 5 (0.19)	280g/ 0.61 lb

※ The holding power is based on a test piece of SS400, 10 mm thick, ground surface.

Model KOC CABLE HANGER



↑ indicates the attractive face.

[Application]

Very useful for holding welding cables and for putting jigs and fixtures in order on work sites of shipbuilding, iron and steel manufacturing, bridge building, canneries and similar operations.

[Features]

- Strong holding power capable of destacking stacked thin iron sheets.
- With the lateral sliding resistance of 80N (8kgf), this hanger generates sufficient holding power as a hanger.

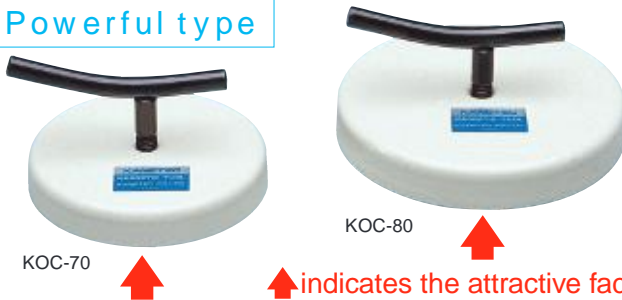
[mm (in)]

Model	Holding Power	Dimensions			Mass
		□	□	□	
KOC-1B	300N 30kgf)	50 1.96)	27.6 1.08)	40 1.57)	400g/0.88 lb

※ The holding power is based on a test piece of SS400, 10 mm thick, ground surface.
※ The hook part is 87 mm high.

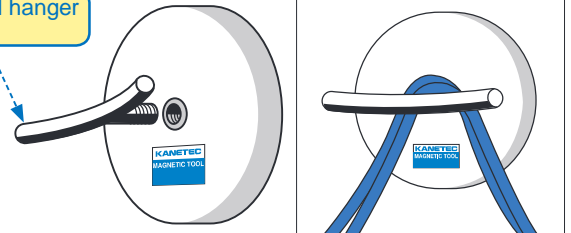
Model KOC MAGHANGER*

Powerful type



↑ indicates the attractive face.

Dedicated hanger included



[Application]

Powerful magnetic hanger holders most suitable for cabling and temporary wiring work on sites. Applicable to a wide range of uses as a hanger, since these hangers powerfully attach to thin steel sheets, steel lockers, refrigerators, etc.

[mm (in)]

Model	Holding Power	Dimensions	Grip Mounting Thread	Mass
KOC-70	130N 13kgf)	φ 66 2.59)× 11 0.43)	M6 0.23)× 1.0 0.03)	210g/0.46 lb
KOC-80	300N 30kgf)	φ 80 3.15)× 13 0.51)	depth 5 0.19)	330g/0.72 lb

※ The holding power is based on a test piece of SS400, 10 mm thick, ground surface.

Model WK POWERFUL MAGNETIC HOLDER



WK-P/TP

↑ indicates the attractive face.

[Application]

Suitable as holding tools for tentative installation and tack welding on such work sites as construction, bridge, shipbuilding and piping.

[Features]

- There are three faces where additional machining (such as drilling) can be done. (Refer to the dimension drawing)
- The exterior is made of aluminum to prevent adhesion of iron powder to the top and side faces.
- Model WK-TP has a construction that is highly resistant to heat.

Model	Heat Resistance	Holding Power	Mass
WK-P	60°C	1000N 100kgf)	0.75kg/1.65 lb
WK-TP	180°C		

※ The holding power is based on a test piece of SS400, 10 mm thick, ground surface.

