

## Operating instructions

### PC opto-adapter PCO 200



## Contents

<b>PC opto-adapter PCO 200</b>	<b>1</b>
<b>Contents</b>	<b>1</b>
<b>Safety</b>	<b>1</b>
<b>Checking the usage</b>	<b>2</b>
Part designations	2
Type label	2
<b>Establishing a connection</b>	<b>2</b>
Driver known	2
Installing the driver	2
<b>Determining the COM port number</b>	<b>3</b>
<b>Technical data</b>	<b>4</b>
<b>Certification</b>	<b>4</b>
Declaration of conformity	4
<b>Logistics</b>	<b>4</b>

## Safety

### Please read and keep in a safe place



Please read through these instructions carefully before installing or operating. Following the installation, pass the instructions on to the operator. This unit must be installed and commissioned in accordance with the regulations and standards in force. These instructions can also be found at [www.docuthek.com](http://www.docuthek.com).

### Explanation of symbols

■, **1**, **2**, **3**... = Action  
▷ = Instruction

### Liability

We will not be held liable for damage resulting from non-observance of the instructions and non-compliant use.

### Safety instructions

Information that is relevant for safety is indicated in the instructions as follows:

#### **DANGER**

Indicates potentially fatal situations.

#### **WARNING**

Indicates possible danger to life and limb.

#### **! CAUTION**

Indicates possible material damage.

All interventions may only be carried out by qualified gas technicians. Electrical interventions may only be carried out by qualified electricians.

### Conversion, spare parts

All technical changes are prohibited. Only use OEM spare parts.

## Changes to edition 08.13

The following chapters have been changed:

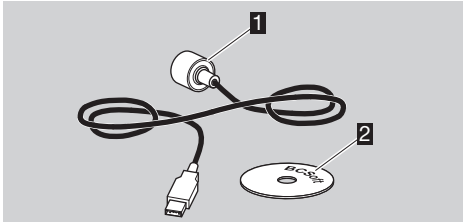
- Establishing a connection
- Determining the COM port number
- Technical data
- Logistics

## Checking the usage

PC opto-adapter PCO 200 for cable-based communication between Kromschöder devices with optical interface and a PC or notebook with USB interface. Preconditions for operation with PC opto-adapter PCO 200: PC software BCSoft from version 3.6.8, PC with USB interface.

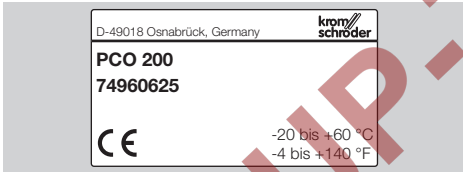
This function is only guaranteed when used within the specified limits – see page 4 (Technical data). Any other use is considered as non-compliant.

### Part designations



- 1 PC opto-adapter PCO 200
- 2 CD: PC software BCSoft/drivers

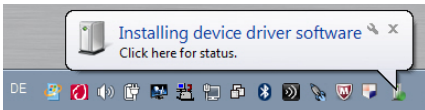
### Type label



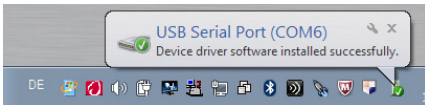
## Establishing a connection

### Driver known

- 1 Connect PCO 200 to an available USB port on the PC or notebook.
- ▷ The required driver is already available in your operating system. The connection between device and PC/notebook will be established automatically.
- ▷ The “Installing device driver software” message appears in the taskbar.
- ▷ The following context message is displayed:



- ▷ The PCO 200 driver is being installed.
- ▷ Once the driver has been successfully installed, the following context message appears:

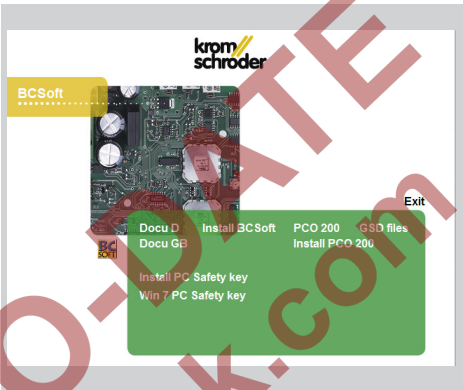


- ▷ The PCO 200 is ready for operation.

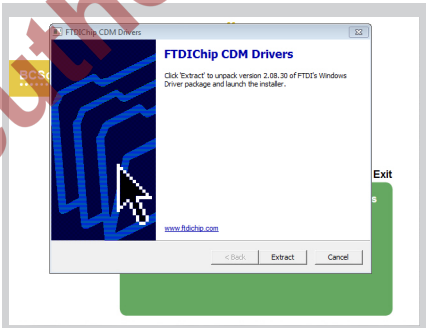
- ▷ When you now try to start BCSoft, you will be asked to enter the COM port number in the interface configuration dialog box.
- 2 See page 3 (Determining the COM port number).

### Installing the driver

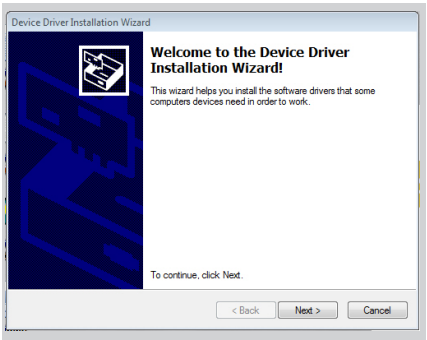
- 1 Insert the “PC software BCSoft/drivers” CD.
- 2 Select “Install PCO 200”.



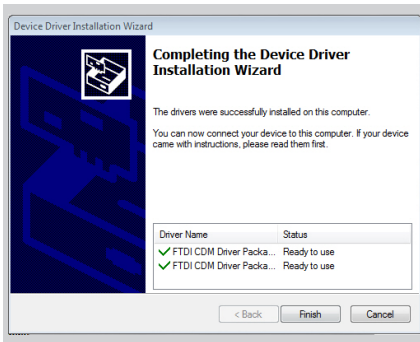
- 3 Click on “Extract” to extract the files and start installation.



- 4 Click on “Next”.



- 5 Click on "Finish" to finish installation.

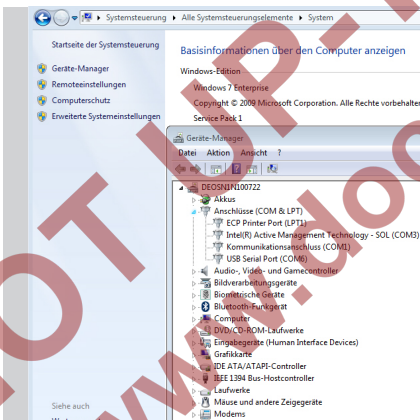


- If the installation procedure has been completed successfully, the PCO 200 can be connected to an available USB port and is ready for use.

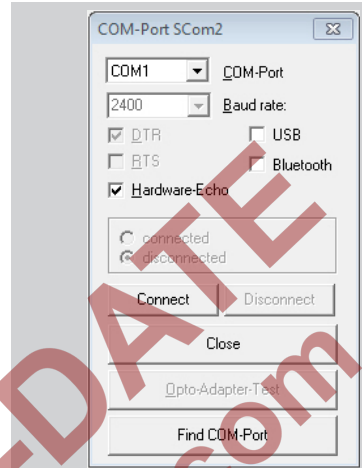
## Determining the COM port number

- The COM port number of the PCO 200 can be found in the Device Manager in the Control Panel.

- 1 Open the interface configuration dialog box by selecting the menu item Scom2 or Chipcom under Extras\Options\Interface in BCSoft.



- 2 Enter the COM port number, in this example "COM 15".



- 3 Click on "Connect" to connect BCSoft to the PCO 200.

## Technical data

Electrical interface: USB V1.1  
Plug connector: USB Type A plug  
Operating voltage: passive 5 V power supply (via USB port)  
FTDI driver (virtual COM port/VCP); current drivers can also be found at [www.ftdichip.com](http://www.ftdichip.com)  
Operating systems: Win9x, Win2000, WinXP, Windows Vista, Windows 8.x  
IR interface: baud rate 2400 baud  
Optical interface retaining force: > 17 N  
Lens: Ø 26 mm  
Cable length: 3 m  
Weight: approx. 90 g  
Housing: anodized aluminium  
Colour: black  
Ambient temperature:  
-20 to +60°C (-4 to +140°F)  
Storage temperature:  
-40 to 70°C (-40 to 158°F)

## Certification

### Declaration of conformity

We, the manufacturer, hereby declare that the product PCO 200 complies with the essential requirements of the following Directives and Standards:

Directives:

– 2004/108/EC

Standards:

– EN 610006-2

– EN 610006-4

The production is subject to a Quality System pursuant to DIN EN ISO 9001.

Elster GmbH

Scan of the Declaration of conformity (D, GB) – see [www.docuthek.com](http://www.docuthek.com)

## Logistics

### Transport

Protect the unit from external forces (blows, shocks, vibration). On receipt of the product, check that the delivery is complete, see page 2 (Part designations). Report any transport damage immediately.

### Storage

Store the product in a dry and clean place.

Storage temperature: see page 4 (Technical data).

Storage time: 6 months in the original packaging before using for the first time. If stored for longer than this, the overall service life will be reduced accordingly (by the corresponding amount of extra storage time).

### Packaging

The packaging material is to be disposed of in accordance with local regulations.

### Disposal

Components are to be disposed of separately in accordance with local regulations.

## Contact

If you have any technical questions, please contact your local branch office/agent. The addresses are available on the Internet or from Elster GmbH.

We reserve the right to make technical modifications in the interests of progress.

**elster**  
Kromschroder

Elster GmbH  
Postfach 28 09, D-49018 Osnabrück  
Strothweg 1, D-49504 Lotte (Büren)

T +49 541 1214-0

F +49 541 1214-370

[info@kromschroeder.com](mailto:info@kromschroeder.com), [www.kromschroeder.com](http://www.kromschroeder.com)