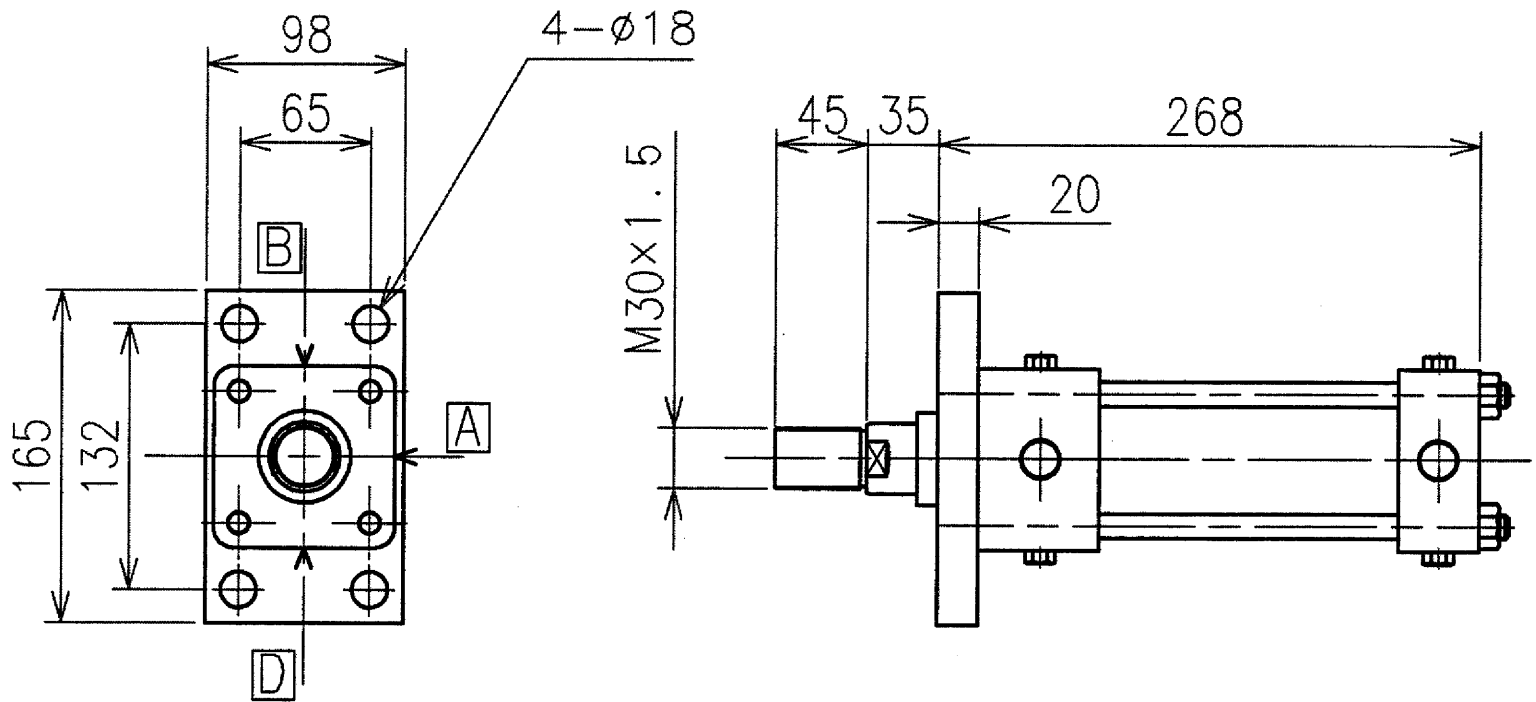


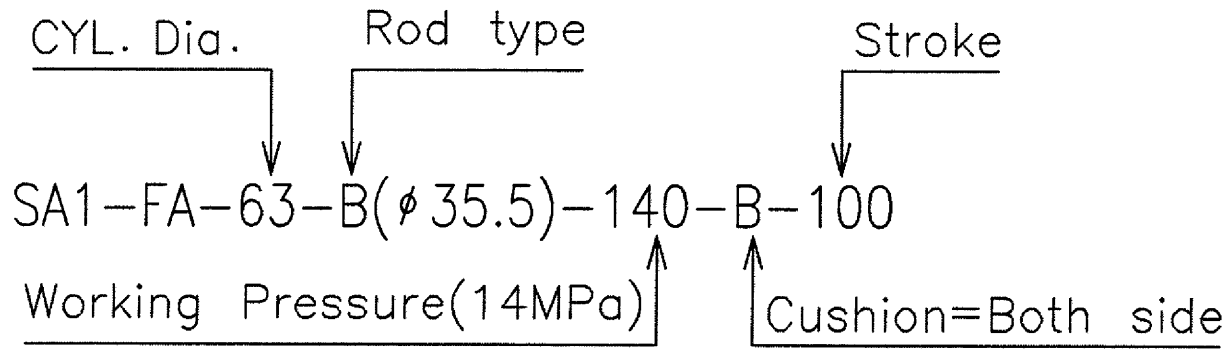
MACHINING TOLERANCE (mm)		SYMBOL OF SURFACE ROUGHNESS:Ra		No.	REVISION	DATE	SIGN
0.5 TO 6	INCL.	± 0.1	CONVERSION TABLE OF SYMBOLS "Ra" & "Rmax"				
OVER 6 TO 30	INCL.	± 0.2	Ra (Am)      Rmax [Ry]	△×		.	
// 30 TO 120	//	± 0.3	12.5      ▽      50S	△×		.	
// 120 TO 315	//	± 0.5	3.2      ▽▽      12.5S	△×		.	
// 315 TO 1000	//	± 0.8	1.6      ▽▽▽      6.3S	△×		.	
// 1000 TO 2500	//	± 1.2	0.2      ▽▽▽▽      0.8S	△×		.	

CAREER      406-29278



Specification

1. Maker: HORIUCHI
2. Model: SA1-FA-63-B(φ 35.5)-140-B-100
3. Used for Slide-locking
4. Working pressure: 14MPa    CYL. Proof pressure: 21MPa
5. Piston speed: 300mm/s
6. Frequency: 50 Stroke/day
7. Environment: Indoor & Ambient-Tem. 0~40°C
8. Port-location=A    Cushion-location=B    Air-vent=D
9. Port-size=Rc1/2



1. C.SCR M16X40 -4

This drawing contains the confidential and proprietary information of AIDA ENGINEERING, LTD. Which should be kept in strict confidence and should be used only for the purpose of maintenance of AIDA's equipment.

MAT.	購入品	QTY	MODEL	DWG. No.
			SL700	
MAT.WT.	DATE	SCALE	NAME	
kg	2002-09	1:5	CYLINDR	406-33407
				PART No.
SG				A-355

AIDA ENGINEERING, LTD.