



  Dal 1970 la ventilazione made in Italy

---

EXPORT CATALOGUE



# VOLCANO



- Fitted with industrial plug of 16A or 32A
- Available in 230V and 400V at 50Hz only

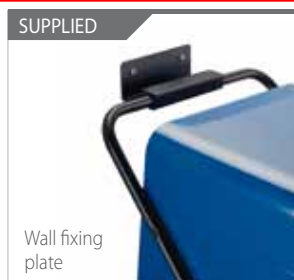
## VERSIONS

- VOLCANO Basic model
- VOLCANO TIMER (Programmable timer up to 24 h)

## HEATING Industrial environments



MODEL	VOLT at 50 Hz	POWER MAX	A		TIMER	DIMENSIONS (cm) p x h x l	WEIGHT (Kg)	SOUND PRESSURE (a 3 mt) dB(A)
			MAX	MIN				
<b>VOLCANO 30 SINGLE-PHASE</b>	<b>230 V</b>	<b>3000 W</b>	<b>13</b>	<b>6,5</b>		<b>27x38x34</b>	<b>7,2</b>	<b>40</b>
VOLCANO 30 SINGLE-PHASE TIMER	230 V	(1500+1500)			•	27x38x34	7,2	40
VOLCANO 30 THREE-PHASE	400 V	3000 W	4,3	3,7		27x38x34	7,2	42
VOLCANO 30 THREE-PHASE TIMER	400 V	(1500+1500)			•	27x38x34	7,2	42
VOLCANO 50 THREE-PHASE	400 V	5000 W				27x38x34	7,2	43
VOLCANO 50 THREE-PHASE TIMER	400 V	(2500+2500)	7,2	6,2	•	27x38x34	7,2	43
VOLCANO 90 THREE-PHASE	400 V	9000 W				36x47x43	11,3	46
VOLCANO 90 THREE-PHASE TIMER	400 V	(4500+4500)	13	11,3	•	36x47x43	11,3	46



## Application :

For factories, warehouses, Garages, stores, shipping rooms power stations, aircraft hangers. Can be used for primary, supplementary, spot, or dual-system heating , Power Generating Stations,Pump Houses

## Specification :

Cabinet - Heavy 18 gauge steel, phosphate undercoated for corrosion resistance and finished in Blue polyester powder coat for long lasting.

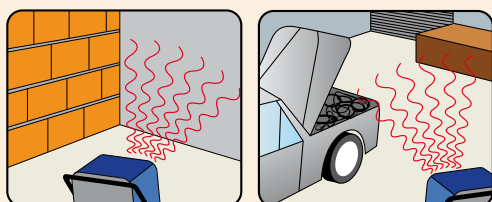
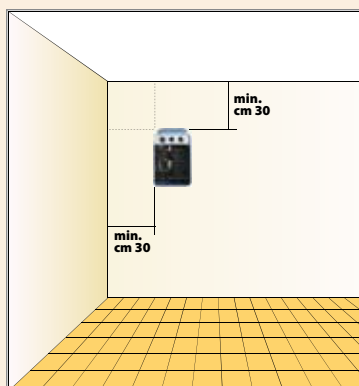
Fan is Almunuim propeller type accurately balanced and correctly pitched to optimize performance.

Advanced pull-through air flow design draws air across heating element for more even air distribution and cooler element operation.

## Elements :

Heating Elements have corrosion resistant steel fins Aluminum-finned, copper clad steel sheath heating element has longer useful life, because of cooler sheath temperature and faster heat dissipation.

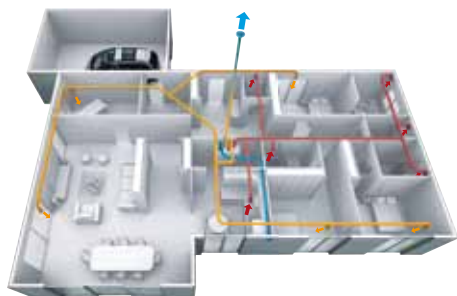
## Installation



Applications

# ENERGY EFFICIENT ELICENT HOME SYSTEMS

## Whole house mechanical ventilation with heat recovery



### High efficiency central heat recovery solutions for air intake/extract:

the hot internal air extracted from the premises goes through a heat exchanger before being expelled outside. The fresh air coming from outside is first filtered and then goes through the exchanger where it recuperates up to **93%** of the heat released by the extracted air.

- High energy and thermal efficiency thanks to EC motors and high performance heat exchangers
- Air quality and humidity control 24 hours
- Maximum comfort

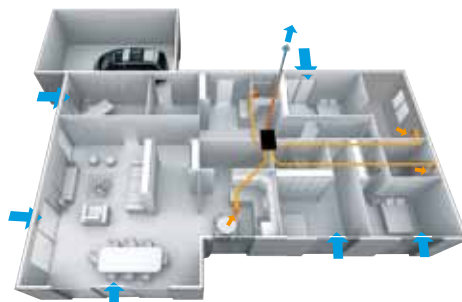


AERA in line



AERA

## Whole house mechanical extract ventilation



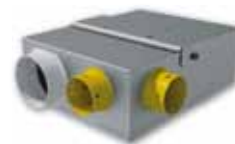
### High efficiency central ventilation solutions for air extract:

the stale air is exhausted from humid rooms (kitchen, bathroom, toilets, laundry). The fresh air is supplied by specific air entrance points.

- High energy efficiency with EC motors.
- Designed for ease of installation and low noise running



E-BOX MICRO

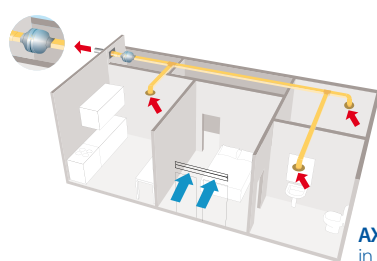


MULTIBOX

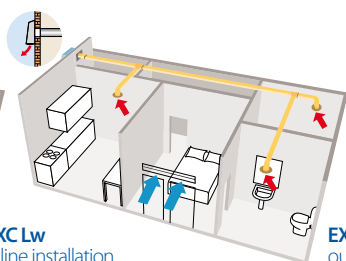
All models available with EC motors.

## Centralised mechanical ventilation - Low watt fans

Powerful low watt centrifugal fans for in line, outdoor or roof application. Ideal and cost-effective solution as small size centralised ventilation system in residential and commercial areas.



AXCLw in line installation



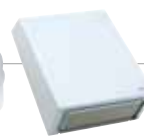
EXTLw outdoor installation



MRF Lw roof installation



AXCLw



EXTLw



MRF Lw



## Decentralised mechanical ventilation - Design and Performance



ELEGANCE  
Wall / Ceiling

Axial fans



CEILING

WALL



ELIX  
ELPREX  
Centrifugal fans



SINGLE DUCT

MULTIPLE DUCT



eSmile  
Powerflow fans



DUCT

CEILING

WALL



**MAICO**  
ITALIA

**Maico Italia S.p.A.**

Via Maestri del Lavoro, 12 - 25017 Lonato del Garda (Brescia) Italia

Tel. +39 030 9913575 - Fax +39 030 9913766

**sales@maico-italia.it - www.elicent.it**



Member of:



We reserve the right to modify any technical data without notice.  
Different voltage and frequency upon request.

*All trademarks are the property of Maico Italia Spa - All rights reserved.*