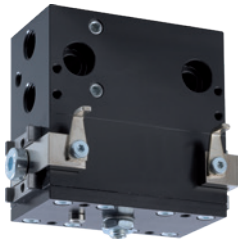


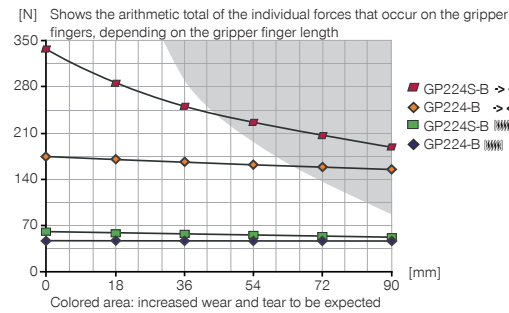
2-JAW PARALLEL GRIPPERS

INSTALLATION SIZE GP224

PRODUCT SPECIFICATIONS

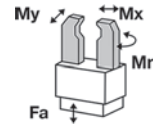


Gripping force diagram



Forces and moments

Displays static forces and moments that can also have an effect, besides the gripping force.



Mr [Nm]	8
Mx [Nm]	15
My [Nm]	8
Fa [N]	250

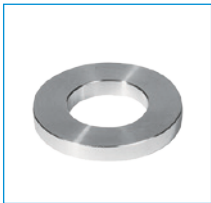
INCLUDED IN DELIVERY



Mounting block

KB8K

RECOMMENDED ACCESSORIES



Centering Disc

ZE15H7X4



Inductive proximity switch
- Connector M8

NJ8-E2S



Magnetic field sensor
Angled Cable 0,3 m -
Connector M8
MFS103SKHC



Magnetic field sensor
Straight Cable 0,3 m -
Connector M8
MFS204SKHC



2-Position-Sensor Cable
0,3 m - Connector M8

MFSP2SKHC-02



Plug-in connector Straight Ca-
ble 5m - Socket M8 (female)

KAG500



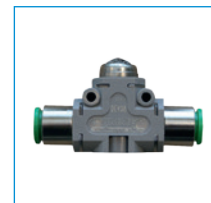
Straight Fittings - Quick
Connect Style

GVM5



Angled Fittings - Quick
Connect Style

WVM5



Quick Exhaust Valve

DEV04



Pressure Safety Valve

DSV1-8

*All data measured at 6 bar



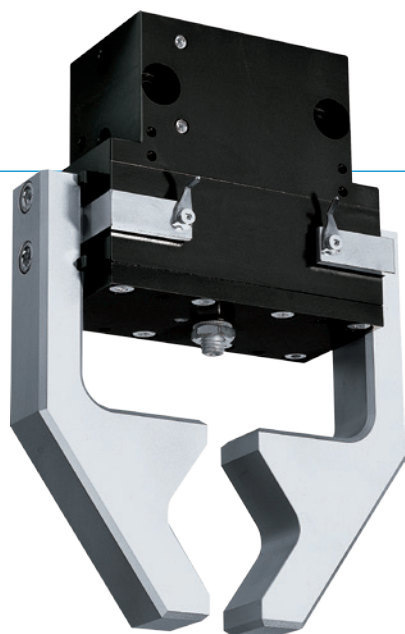
2-JAW PARALLEL GRIPPERS

SERIES GP200

1

Series GP200 / 2-Jaw Parallel Grippers / pneumatic / Grippers

▶ PRODUCT ADVANTAGES



“The variable”

▶ Smooth stroke configuration

An adjusting screw allows you to adjust the stroke to your specific application

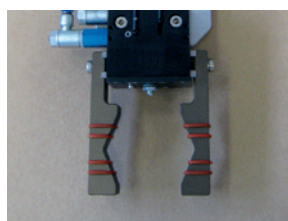
▶ Proven technology

We have more than 20 years of proven reliability, which ensures uninterrupted production for you

▶ Dirt protection

Using the scrapers on the guides, you can reliably use the gripper even under the harshest conditions

▶ THE BEST PRODUCT FOR YOUR APPLICATION



▶ Our products welcome the challenge!

Extreme conditions, all over the world—our tried and tested components and systems give you endless possibilities.

Find the best product for your specific use:

www.zimmer-group.de

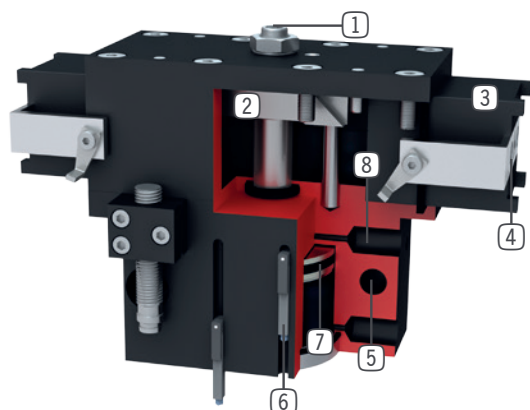
HOW TO ORDER CORRECTLY

- ▶ The product order numbers are arranged according to this diagram:

Order no.	GP280	<input type="checkbox"/>	<input type="checkbox"/>	
High force		S		
Without intergrated spring			-99	



► BENEFITS IN DETAIL



- ① **Stroke adjustment**
 - infinitely adjustable in „open“ movement
 - adjusting screw in delivery
- ② **Wedge hook mechanism**
 - synchronized the movement of the gripper jaws
 - high force transfer
- ③ **Square guide**
 - high forces and moments capacity
- ④ **Gripper jaw**
 - individual gripper finger mounting
- ⑤ **Mounting and positioning**
 - mounting possible from several sides for versatile positioning
- ⑥ **Sensing slot**
 - mounting and positioning of magnetic field sensors
- ⑦ **Drive**
 - double-acting pneumatic cylinder
- ⑧ **Energy supply**
 - possible from several sides

► SERIES CHARACTERISTICS



Number of installation sizes	4
Stroke per jaw	6 mm - 40 mm
Gripping force	160 N - 4500 N
Weight	0,33 kg - 8,3 kg
AP class	3



10 million maintenance-free cycles (max.)



Spring closing C



High-strength S



Inductive sensor



IP40



Magnetic field sensor



Purged air