

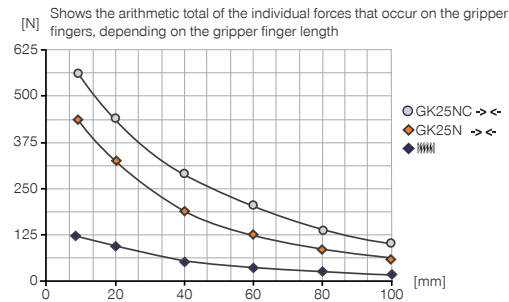
# 2-JAW RADIAL GRIPPER

## INSTALLATION SIZE GK25

### PRODUCT SPECIFICATIONS

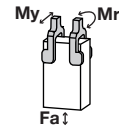


#### Gripping force diagram



#### Forces and moments

Displays static forces and moments that can also have an effect, besides the gripping force.



Mr [Nm]	2.5
My [Nm]	4
Fa [N]	250

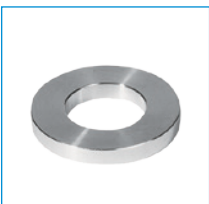
### INCLUDED IN DELIVERY



Mounting block

KB8K

### RECOMMENDED ACCESSORIES



Centering Disc

ZE20H7X4



Buffer stop

PB25N



Inductive proximity switch  
- Cable 5 m

NJ8-E2



Inductive proximity switch  
- Connector M8

NJ8-E2S



Magnetic field sensor  
Angled Cable 0,3 m -  
Connector M8  
MFS103SKHC



Magnetic field sensor Straight  
Cable 0,3 m - Connector M8  
MFS204SKHC



Plug-in connector Straight Ca-  
ble 5m - Socket M8 (female)  
KAG500



Plug-in connector Angled Ca-  
ble 5m - Socket M8 (female)  
KAW500



Straight Fittings - Quick  
Connect Style  
GVM5



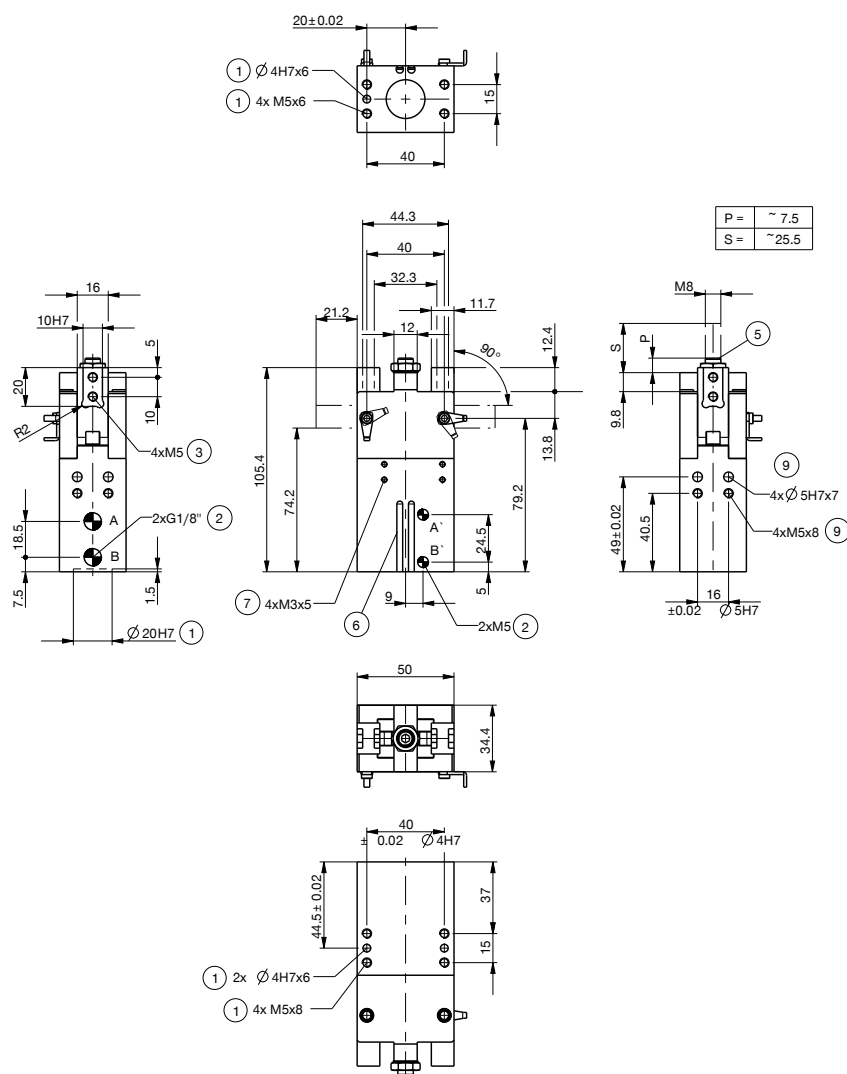
Flow Control Valves - with  
Swivel joint  
DRVM5X4

Order no.	► Technical Data*	
	GK25N-B	GK25NC-B
Stroke per jaw [°]	90	90
Gripping moment in closing [Nm]	10.5	14.5
Gripping moment secured by spring min. [Nm]		4
Gripping force in closing [N] **	440	610
Closing time [s]	0.15	0.25
Opening time [s]	0.15	0.25
Repetition accuracy +/- [mm]	0.05	0.05
Operating pressure min. [bar]	3	5
Operating pressure max. [bar]	8	8
Operating temperature min. [°C]	5	5
Operating temperature max. [°C]	+80	+80
Air volume per cycle [cm³]	18	21
Weight [kg]	0.42	0.58

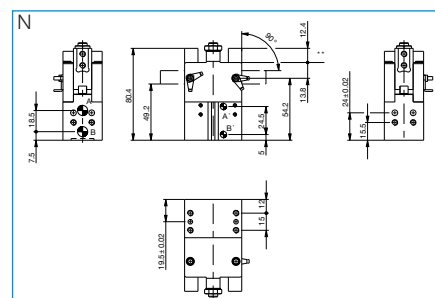
\* All data measured at 6 bar

\*\* Measured from top edge of housing

NC



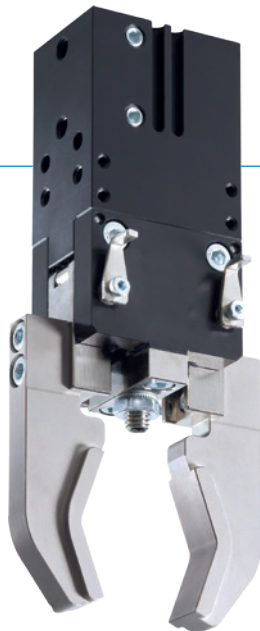
- ① Gripper attachment
- ② Energy supply
- ③ Fixing for gripper finger
- ⑤ Stroke adjustment screw
- ⑥ Integrated slot for magnetic field sensor
- ⑦ Fixing for mounting block
- ⑨ Buffer stop mounting
- A Air connection (close)
- B Air connection (open)
- A Air connection, alternative (close)
- B Air connection, alternative (open)



# 2-JAW RADIAL GRIPPER

## SERIES GK

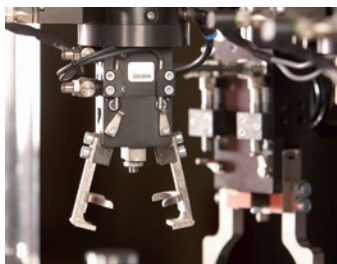
### ▶ PRODUCT ADVANTAGES



#### “The compact”

- ▶ **Proven technology**  
We have more than 20 years of proven reliability, which ensures uninterrupted production for you
- ▶ **Best force/installation space ratio**  
Force transmission using the toggle lever enables high gripping force while optimally utilizing the installation space
- ▶ **Smooth stroke configuration**  
You can adjust the 180° opening angle to be unique to your application using an adjusting screw

### ▶ THE BEST PRODUCT FOR YOUR APPLICATION



- ▶ **Our products welcome the challenge!**  
Extreme conditions, all over the world—our tried and tested components and systems give you endless possibilities.  
Find the best product for your specific use:  
[www.zimmer-group.de](http://www.zimmer-group.de)

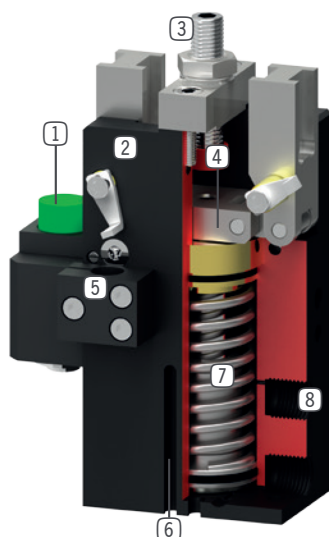
#### HOW TO ORDER CORRECTLY

- ▶ The product order numbers are arranged according to this diagram:

Order no.	GK15N	<input type="checkbox"/>	-B	
External gripping, self locking mechanism at 0° opening angle and spring closing			C	



## ► BENEFITS IN DETAIL



- ① **Buffer stop**
  - absorption of kinetic energy for heavy and long gripper fingers
- ② **Robust, lightweight housing**
  - Hard-coated aluminum alloy
- ③ **Stroke adjustment screw**
  - Infinitely adjustable opening stroke
- ④ **Guided toggle lever mechanism**
  - synchronized the movement of the gripper jaws
  - mechanically self-locking
- ⑤ **Mounting block**
  - mounting for inductive proximity switch
- ⑥ **Sensing slot**
  - mounting and positioning of magnetic field sensors
- ⑦ **Integrated gripping force safety device**
  - spring integrated into cylinder as energy storage
- ⑧ **Energy supply**
  - possible from several sides

## ► SERIES CHARACTERISTICS



Number of installation sizes	6
Stroke per jaw	0° - 90°
Gripping force	70 N - 4250 N
Weight	0,1 kg - 4,1 kg
AP class	2



10 million maintenance-free cycles (max.)



IP20



Spring closing C



Magnetic field sensor



Inductive sensor