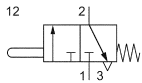


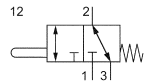
Series E

Stem-operated valves, 3/2- and 5/2-way,
M5 (10/32 UNF) and G1/8 • 80 to 320 NI/min (0.081 – 0.325 Cv)

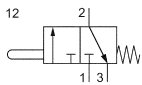
airtec



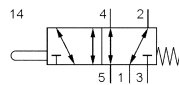
E-25-310



E-18-310, E-18-310-Q



E-28-310



E-18-510, E-18-510-Q



Design, function and technical data

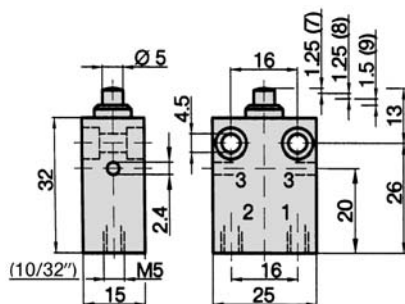
To ensure the maximum life of the valve, the actuating mechanism must contact the stem at an angle $\leq 30^\circ$. If this is not possible, a roller lever valve is recommended.

Types E-25-310 and E-28-310: Port 1 must be used as the pressure inlet.

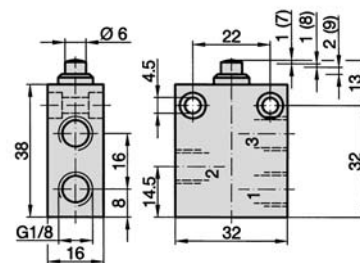
Types E-18-310 and E-18-510: All ports are interchangeable.

Valves E-18-310 and E-18-510 are available for use with vacuum (–0.95 ... 12 bar / –14 ... 175 psi). Order number changes to E-18-310-Q and E-18-510-Q.

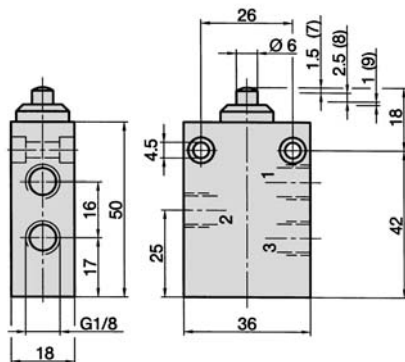
E-25-310



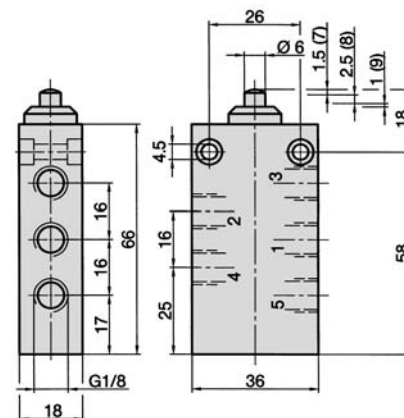
E-28-310



E-18-310, E-18-310-Q



E-18-510, E-18-510-Q



1 = pressure inlet
2, 4 = outlet
3, 5 = exhaust

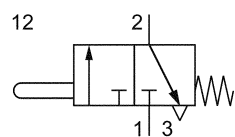
(7) = pre-stroke, valve is not actuated
(8) = working stroke
(9) = end of stroke, bottomed

Order number	E-25-310	E-28-310	E-18-310	E-18-510
Function	3/2-way spring return			5/2-way spring return
Connection	M5 (10/32 UNF)	G 1/8		
Nominal size	2 mm	4 mm		
Flow rate	80 NI/min (0.081 Cv)	210 NI/min (0.213 Cv)	320 NI/min (0.325 Cv)	
Pressure range	0 ... 12 bar (0 ... 175 psi)			
Actuating force at 6 bar	15 N	16 N	27 N	28 N
Temperature range	– 10 °C ... + 70 °C (+ 14 °F ... + 158 °F)			
Materials	Body: Al (anodized), Inner parts: Al, brass, stainless steel, Stem: stainless steel			
	Seals: NBR		Seals: NBR and POM	
Medium	Compressed air in accordance with ISO 8573-1: 2001, Class 7 4 – and free of aggressive additives			
Weight	0.034 kg (0.075 lb.)	0.051 kg (0.112 lb.)	0.092 kg (0.203 lb.)	0.115 kg (0.253 lb.)

Series E

Stem-operated valves, 3/2-way,
M5 (10/32 UNF) • 80 NI/min (0.081 Cv)

airtec



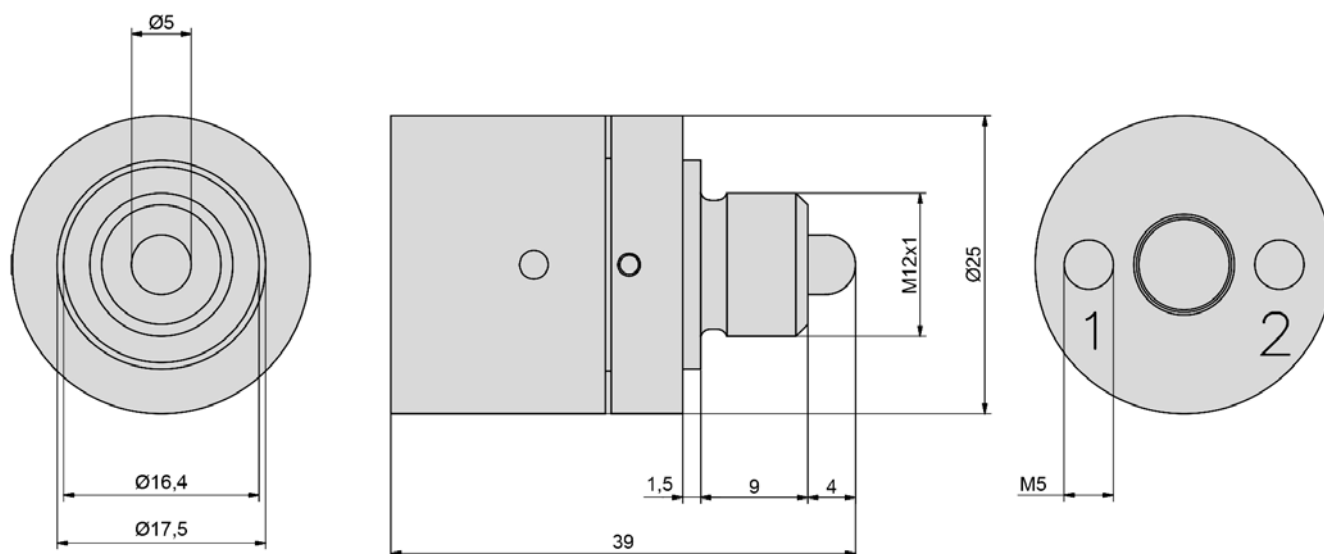
E-30-311-M12



Design and function

The 3/2-way stem-operated valve and its M12x1 male mounting thread (groove for O-Ring mounting is provided) is designed for the direct mounting in technical devices. The air supply port 1 is located at the bottom. Operating the stem opens flow from port 1 to port 2.

E-30-311-M12



Order number	E-30-311-M12
Function	3/2-way spring return
Attachment	M12x1
Connection	M5 (10/32 UNF)
Nominal size	2 mm
Nominal flow	80 NI/min (0.081 Cv)
Working pressure range	to 12 bar (0 ... 175 psi)
Actuating force at 6 bar	25 N
Temperature range	max. - 10 °C ... + 70 °C (+ 14 °F ... + 158 °F)
Materials	Body: Al (anodized) Seals: Viton Inner parts: Al, stainless steel and brass
Weight	0,037 kg (0.082 lb.)