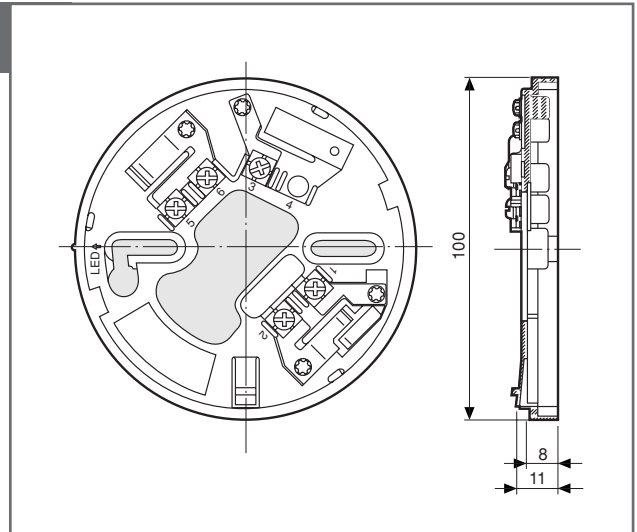
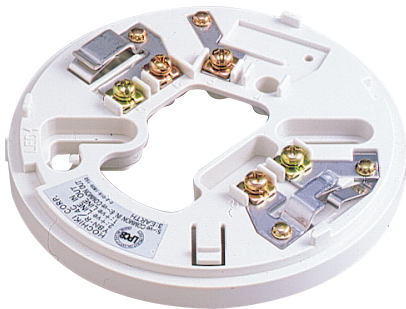


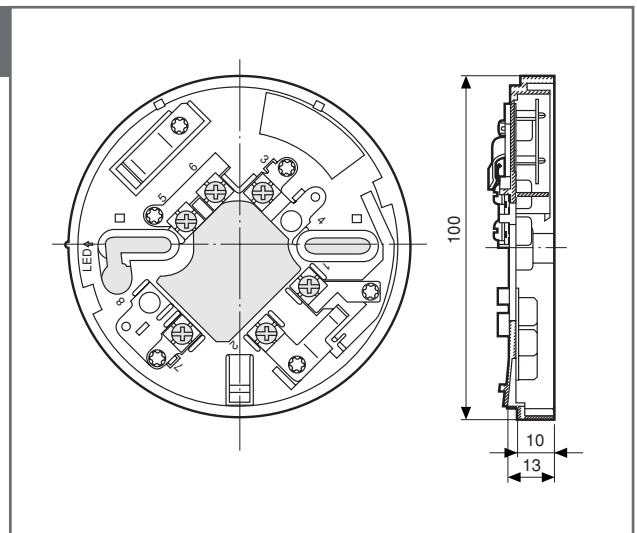
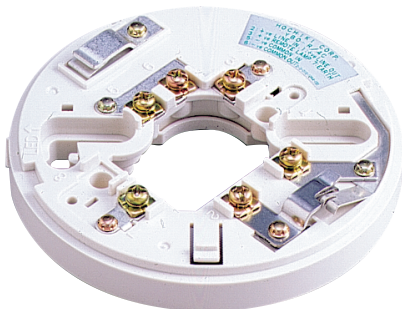
# CONVENTIONAL COMMON MOUNTING BASE : YBN/YBO/YBF/NS

## Detector base

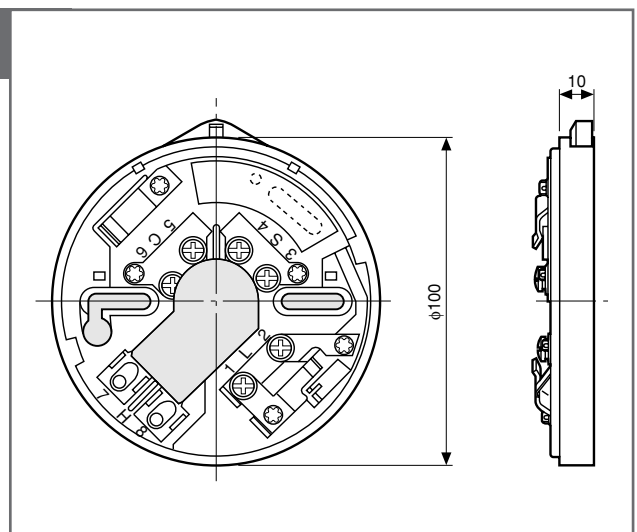
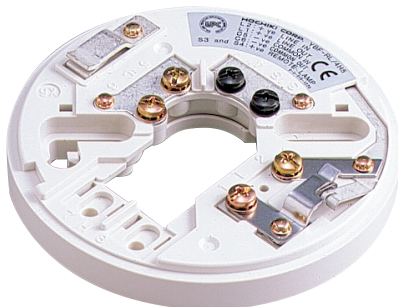
Model YBN-R/\*, NS4-\*



Model YBO-R/\*



Model YBF-RL



## CONVENTIONAL COMMON MOUNTING BASE : YBN/YBO/YBF/NS

### Detector base

Model	Made	Applicable Standard	Remarks
YBN-R/4 *	U.K.	LPCB	Electronics free mounting base
YBN-R/4C *	JAPAN	GB4715, GB4716/LPC	Electronics free mounting base
YBN-R/4SK *	U.K.	LPCB	Electronics free mounting base with schottky line continuity
YBO-R/4A *	JAPAN	AS1603	Mounting base with remote indicator output
YBO-R/4C *	JAPAN	GB4715,GB4716	Mounting base with remote indicator output
YBO-R/5 *	U.K.	LPCB	Mounting base with remote indicator output
YBO-R/5SK *	U.K.	LPCB	Schottky line continuity base (safeline) with remote indicator output
YBO-R/5ZD *	U.K.	LPCB	Zener line continuity base (liveline) with remote indicator output
NS4-100 *	U.S.A.	UL521,UL268	Electronics free mounting base
NS4-220 *	U.S.A.	UL521,UL268	Mounting base with remote indicator output
YBF-RL/4H5	Japan	LPCB	Base with LED and remote indicator output

\* These bases are suitable for use with the NS Series Detector  
Model : SLR, SIJ, DCD and DFJ

### Features

Hochiki advanced technology in the field of smoke and heat detection has solved yet another problem, that is having to change the base every time you wish to change the type of detector head you are using in your detector system layout. The development of these common mounting bases allow complete compatibility of all Hochiki NS series conventional detector heads, thus saving you the time, manpower and cost in whatever changes you wish to make. But this is just one of several outstanding benefits which are listed below.

1. These common mounting bases have a mounting pitch ranging from 48 to 72mm, allowing for easy installation on any kind of outlet box. In addition, they are lightweight and very thin, minimizing their protrusion from the ceiling once installed.
2. The solder-less lugs enables quick and easy wiring, while the bayonet slots permits immediate connection and disconnection of detectors and their bases.
3. The Hochiki NS series conventional bases are designed with features to allow Line Continuity, Relay and Remote Indicator functions.
4. This conventional range also offers two options for Line Continuity; Schottky (Safeline) and Zener (Liveline), to maintain line continuity once a detector has been removed from the base, thus allowing other call points and detectors to continue operations.

#### HOCHIKI CORPORATION

##### SINGAPORE BRANCH OFFICE

629 Aljunied Road #03-16 Cititech Industrial Building  
Singapore 389838  
Tel : 65-6841-9728 Fax : 65-6841-9781  
Email : hochiki@singnet.com.sg

##### HEAD OFFICE

10-43 Kamiosaki 2-Chome. Shinagawa-Ku,  
Tokyo 141-8660, Japan  
Tel : 81-(3)-3444-4116 Fax : 81-(3)-3444-4167  
URL : www.hochiki.co.jp