

Low power single or dual-coil rotary control monitors certified Explosionproof for use in hazardous areas. They are available with a broad range of integrated switching and Falcon solenoid valve options.



Features

- Quantum enclosures integrate position sensors and low power solenoid valves into a single unit.
- Solenoid coils integrated within Quantum housing.
- Choice of factory pre-wired 3 and 4 way Falcon solenoid valves.
- Solenoid valves with a choice of C_v ratings and coil voltage.
- Strong durable Beacon™ offers 360° visual indication available in a choice of styles and colors.
- Touch set cams are hand adjustable, spring loaded and self-locking providing quick calibration of position switches and sensors.
- Terminal strips are pre-wired and numbered with generous working space for ease of use.
- Additional conduit for easy field wiring and mounting accessories as standard.
- Standardized mounting pattern for easy adaptation to common bracketry.
- NAMUR shaft output compliant to VDI/VDE 3845 available.
- Aluminum enclosures with ultra-low copper content (0.2% maximum) ensure robust performance in corrosive environments.
- Rugged stainless steel enclosure.

Technical Data

Agency approvals

Area classification (NEC 500)

Models 777/877	Class I, Division 1, Groups C, D, T6, Ta = 60°C Non-incendive Class I, Division 2, Groups A, B, C, D, T6, Ta = 60°C Class II & III, Division 1, Groups E, F & G
Models 360/366	Class I, Division 1, Groups *A, *B, C, D, T5, Ta = -50°C to 60°C Class II & III Division 1 Groups E, F, G, T5, Ta = -50°C to 60°C Non-incendive Class I, Division 2, Groups A, B, C, D, T5, Ta = -50°C to 60°C * De-rated to Group C and D when used with a solenoid valve

Enclosure standards (ANSI/NEMA 250)

All enclosures	Type 4, 4X, 6P
----------------	----------------

Switches

Mechanical switches, SPDT

Mechanical switches, DPDT

Magnum SPDT (hermetically sealed proximity type) switches

MagPAC bifurcated Switch pack

Enclosures

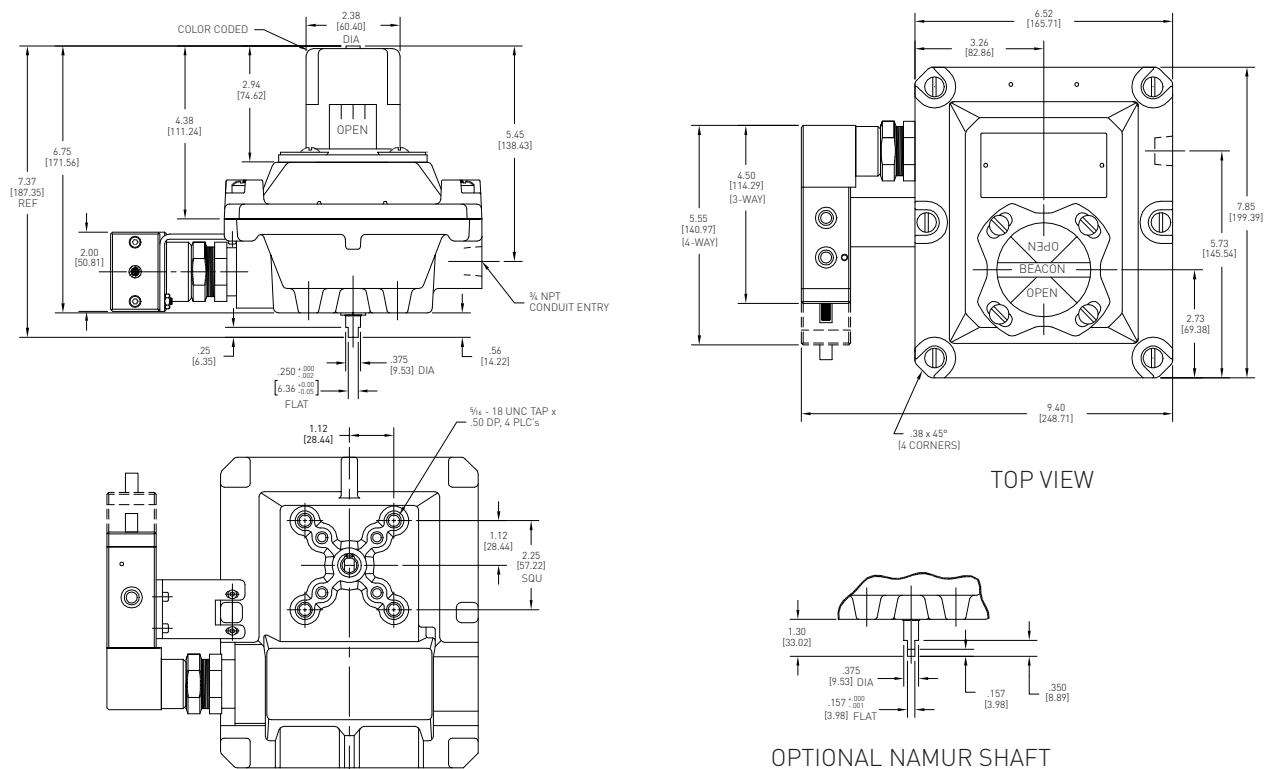
Models 777/877	Aluminum
Model 360	Aluminum
Model 366	Stainless steel

Falcon solenoid valves

C_v	Choice of 0.5, 1.2, 3.5
-------	-------------------------

Materials	Brass, aluminum and stainless steel
-----------	-------------------------------------

Model 777 dimensions



Dimensions in inches, where available metric dimension (mm) in parentheses.

Technical specifications

Materials of construction

Enclosure	Aluminum with powder coat finish
Shaft and hardware	Stainless steel
Bushing	Oil impregnated bronze
Beacon visual indicator	Co-polyester

Drive shaft

Standard	Double-D with 1/4" A/F
Option	NAMUR standard VDI/VDE 3845

Available Switch pack

	V3 mechanical switches, SPDT
	DPDT mechanical switches
	Magnum, SPDT hermetically sealed magnetic proximity switches, with tungsten contacts
	Magnum, SPDT hermetically sealed magnetic proximity switches, with rhodium contacts
	MagPAC Switch pack, SPST normally open bifurcated switches with LED indication

Please consult your sales office for any other requirements

Notes

Conduit entries

Quantum control monitors are available with a choice of conduit entries. Please see the selection guide for standard entries.

Switches and sensors

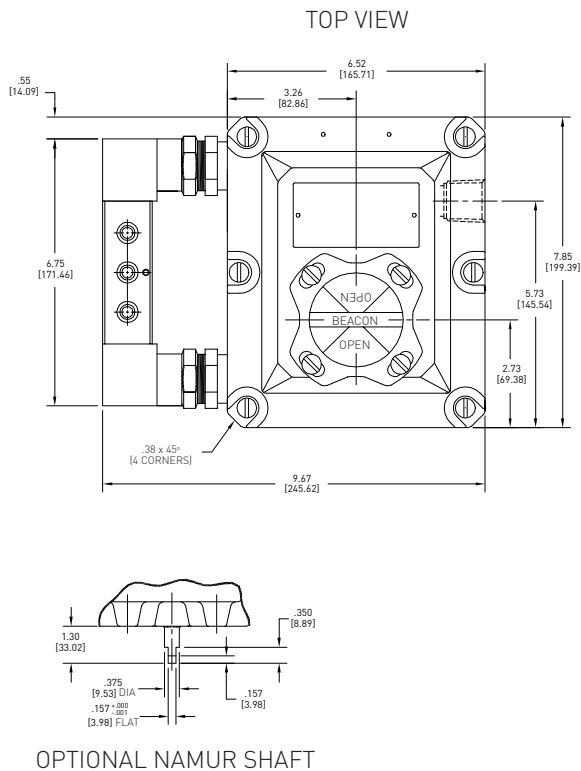
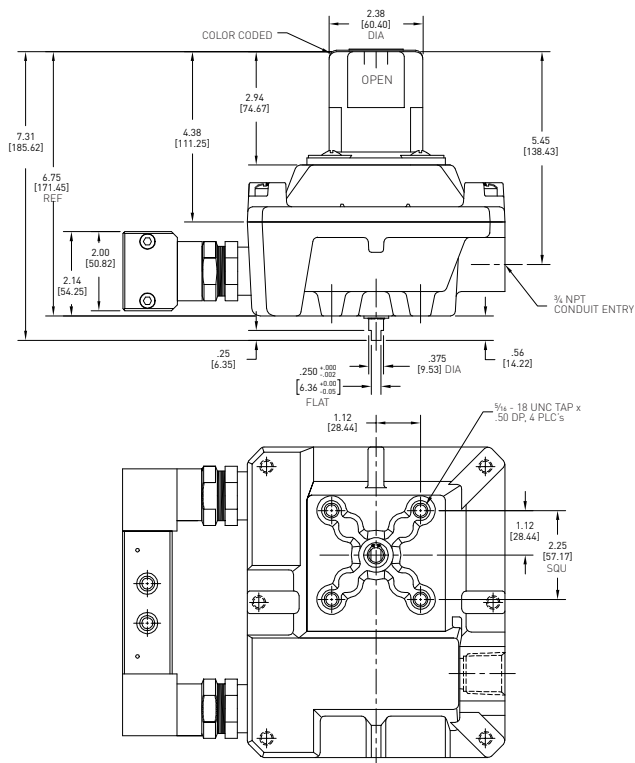
For further information see our switches and sensors data sheet.

Solenoid valves

The Falcon range of solenoid valves allows you to choose the material, voltage, number of ports, number of coils and C_v to best suit your application. See the Falcon data sheet for more information.



Model 877 dimensions



Dimensions in inches, where available metric dimension (mm) in parentheses.

Technical specifications

Materials of construction

Enclosure	Aluminum with powder coat finish
Shaft and hardware	Stainless steel
Bushing	Oil impregnated bronze
Beacon visual indicator	Co-polyester

Drive shaft

Standard	Double-D with 1/4" A/F
Option	NAMUR standard VDI/VDE 3845

Available switches

	V3 mechanical switches, SPDT
	DPDT mechanical switches
	Magnum, SPDT hermetically sealed magnetic proximity switches, with tungsten contacts
	Magnum, SPDT hermetically sealed magnetic proximity switches, with rhodium contacts
	MagPAC Switch pack, SPST normally open bifurcated switches with LED indication

Please consult your sales office for any other requirements

Notes

Conduit entries

Quantum control monitors are available with a choice of conduit entries. Please see the selection guide for standard entries.

Switches and sensors

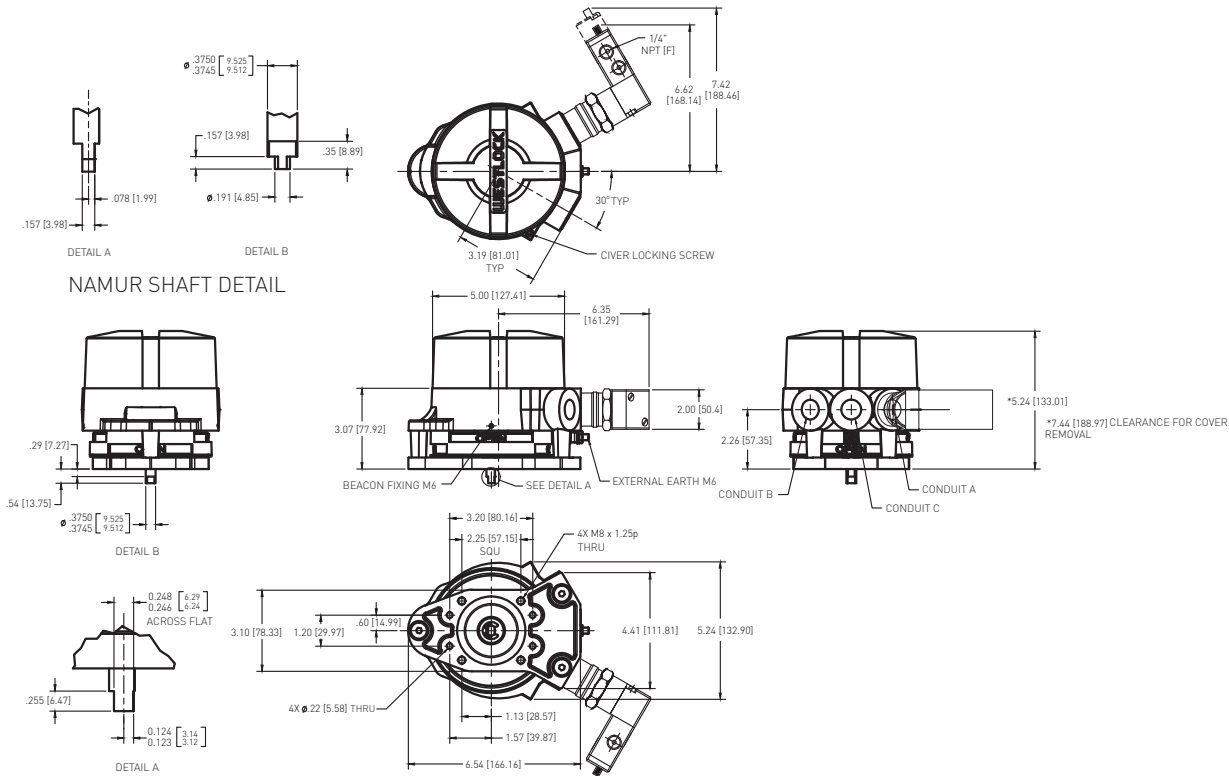
For further information see our switches and sensors data sheet.

Solenoid valves

The Falcon range of solenoid valves allows you to choose the material, voltage, number of ports, number of coils and C_v to best suit your application. See the Falcon data sheet for more information.



Models 360/366 dimensions



Dimensions in inches, where available metric dimension (mm) in parentheses.

Technical specifications	
Materials of construction	
Enclosure	
Model 360	Aluminum with powder coat finish
Model 366	Stainless steel with electropolished finish
Shaft and hardware	Stainless steel
Bushing	Oil impregnated bronze
Beacon visual indicator	Co-polyester
Drive shaft	
Standard	Double-D with 1/4" A/F
Option	NAMUR standard VDI/VDE 3845
Available switches	
V3 mechanical switches, SPDT	
DPDT mechanical switches	
Magnum, SPDT hermetically sealed magnetic proximity switches, with tungsten contacts	
Magnum, SPDT hermetically sealed magnetic proximity switches, with rhodium contacts	

Please consult your sales office for any other requirements

Notes

Conduit entries

Quantum control monitors are available with a choice of conduit entries. Please see the selection guide for standard entries.

Switches and sensors

For further information see our switches and sensors data sheet.

Solenoid valves

The Falcon range of solenoid valves allows you to choose the material, voltage, number of ports, number of coils and Cv to best suit your application. See the Falcon data sheet for more information.



Quantum™ Explosionproof Rotary Control Monitors

Models 777/877 Selection guide

Base model

- 777- Aluminum enclosure
877- Aluminum enclosure for dual coil

Shaft output

- S Standard (double-D with ¼" flats)
N NAMUR

Beacon

- | | | | |
|----|--------------------------------|----|-------|
| BY | BM2-Y (standard) | B1 | BM3-1 |
| RG | BM2-RG (Red Closed/Green Open) | B3 | BM3-3 |
| FE | BM2-Y-FE (French/English) | B5 | BM3-5 |
| AB | BM2-B | B7 | BM3-7 |
| AR | BM2-R | B9 | BM3-9 |
| FC | Flat cover | | |

Conduit

- 1B One ¾" NPT (F)
2B Two ¾" NPT (F)

Position switches

- 2M02 Two SPDT mechanical switches - 8 pt. TS
2M04 Two DPDT mechanical switches - 16 pt. TS
2M06 Two SPDT Magnum switches - 8 pt. TS
2M12 Two SPDT Magnum switches with rhodium contacts - 8 pt. TS
2M13 Two SPST MagPAC module - Two SPST bifurcated switches with LEDs

Analog position transmitter

- 00 Not available

Coil voltage

- X 24 V DC (XP coil)
Y 120 V AC (XP coil)

Falcon valve body

- | | | | |
|----|--|----|--|
| 22 | 0.5 C _v , 3-way, brass | 26 | 0.5 C _v , 4-way, brass |
| 32 | 0.5 C _v , 3-way, aluminum | 36 | 0.5 C _v , 4-way, aluminum |
| 52 | 0.5 C _v , 3-way, 316 SS | 56 | 0.5 C _v , 4-way, 316 SS |
| 23 | 1.2 C _v , 3-way, brass | 27 | 1.2 C _v , 4-way, brass |
| 33 | 1.2 C _v , 3-way, aluminum | 37 | 1.2 C _v , 4-way, aluminum |
| 53 | 1.2 C _v , 3-way, 316 SS | 57 | 1.2 C _v , 4-way, 316 SS |
| 34 | 3.5 C _v , 3-way, aluminum | 38 | 3.5 C _v , 4-way, aluminum |
| 54 | 3.5 C _v , 3-way, 316 SS | 58 | 3.5 C _v , 4-way, 316 SS |
| 20 | 0.5 C _v , dual coil, brass | 30 | 0.5 C _v , dual coil, aluminum |
| 2Y | 1.2 C _v , dual coil, brass | 50 | 0.5 C _v , dual coil, 316 SS |
| 3Z | 3.5 C _v , dual coil, aluminum | 3Y | 1.2 C _v , dual coil, aluminum |
| | | 5Y | 1.2 C _v , dual coil, 316 SS |

Special valve features

- 0 None
V Non-venting (available in 1.2 C_v only)
I Non-venting, no indicator (available in 1.2 C_v only)

Override option

- 0 None
M Momentary (not available in 3.5 C_v 316SS)
L Locking (not available in 3.5 C_v 316SS)
R No-voltage release, non-latching (available in 1.2 C_v only)
N No-voltage release, latching (available in 1.2 C_v only)
E External pilot (not available in 3.5 C_v 316SS)

777- N BY 1B 2M13 00 X 53 0 0 = Model number **777-NBY1B2M1300X5300**

Notes

Specifying your control monitor

Specifying a control monitor is a complex process as there are many variables that affect each individual application. To ensure that you receive the best possible combination for your control and monitoring requirement, please contact your local sales office for advice and guidance from one of our experts.

Hazardous area classification

Please see our data sheet for further information on the global standards affecting the specification and installation of equipment in hazardous areas.

Quantum™ Explosionproof Rotary Control Monitors

Models 360/366 Selection guide

Base model									
360-	Aluminum enclosure								
366-	Stainless steel enclosure								
Shaft output									
S	Standard (double-D with ¼" flats)								
N	NAMUR								
Beacon									
BY	BM2-Y (standard)								
RG	BM2-RG (Red Closed/Green Open)								
Conduit									
1B	One ¾" NPT (F)								
2B	Two ¾" NPT (F)								
Position switches									
2M02	Two SPDT mechanical switches - 8 pt. TS								
2M04	Two DPDT mechanical switches - 16 pt. TS								
2M06	Two SPDT Magnum switches - 8 pt. TS								
2M12	Two SPDT Magnum switches with rhodium contacts - 8 pt. TS								
Analog position transmitter									
00	Not available								
Coil voltage									
X	24 V DC (XP coil)								
Y	120 V AC (XP coil)								
Falcon valve body									
22	0.5 C _v , 3-way, brass				32	3.5 C _v , dual coil, aluminum			
32	0.5 C _v , 3-way, aluminum				26	0.5 C _v , 4-way, brass			
52	0.5 C _v , 3-way, 316 SS				36	0.5 C _v , 4-way, aluminum			
23	1.2 C _v , 3-way, brass				56	0.5 C _v , 4-way, 316 SS			
33	1.2 C _v , 3-way, aluminum				27	1.2 C _v , 4-way, brass			
53	1.2 C _v , 3-way, 316 SS				37	1.2 C _v , 4-way, aluminum			
34	3.5 C _v , 3-way, aluminum				57	1.2 C _v , 4-way, 316 SS			
54	3.5 C _v , 3-way, 316 SS				38	3.5 C _v , 4-way, aluminum			
					58	3.5 C _v , 4-way, 316 SS			
Special valve features									
0	None								
V	Non-venting (available in 1.2 C _v only)								
I	Non-venting, no indicator (available in 1.2 C _v only)								
Override option									
0	None								
M	Momentary (not available in 3.5 C _v 316SS)								
L	Locking (not available in 3.5 C _v 316SS)								
R	No-voltage release, non-latching (available in 1.2 C _v only)								
N	No-voltage release, latching (available in 1.2 C _v only)								
E	External pilot (not available in 3.5 C _v 316SS)								
360-	N	BY	1B	2M06	00	X	53	0	0 = Model number 360-NBY1B2M0600X5300

Notes

Specifying your control monitor

Specifying a control monitor is a complex process as there are many variables that affect each individual application. To ensure that you receive the best possible combination for your control and monitoring requirement, please contact your local sales office for advice and guidance from one of our experts.

Hazardous area classification

Please see our data sheet for further information on the global standards affecting the specification and installation of equipment in hazardous areas.

US/Canada: Saddle Brook, NJ

Ph: +1 201 794 7650

Fax: +1 201 794 0913

E-mail: westlockinfo@westlockcontrols.com

South America: Sao Paulo, Brazil

Ph: +55 11 2588 1400

Fax: +55 11 2588 1410

E-mail: comercial@westlock.com.br

Europe: Kent, England

Ph: +44 1892 516277

Fax: +44 1892 707620

E-mail: sales@westlockuk.com

Asia: Singapore

Ph: +65 6768 5850

E-mail: sales@westlockuk.com