

The AccuTrak 3479 combines the functionality of an explosionproof junction housing and position sensors to provide cost-effective monitoring of linear control and knife gate valves.



Technical Data

Agency approvals

Area classification (NEC 500)

Without eliminator conduit option Class I, Division 1, Groups B, C & D
Class II, Division 1, Groups E, F & G

With eliminator conduit option Class I, Division 1, Groups C & D
Class II, Division 1, Groups E, F & G

Enclosure standards (ANSI/NEMA 250) Type 4, 4X

Switches

Model 3479 MOD3 Magnum (hermetically sealed proximity type) switches

Enclosure

Model 3479 MOD3 Aluminum

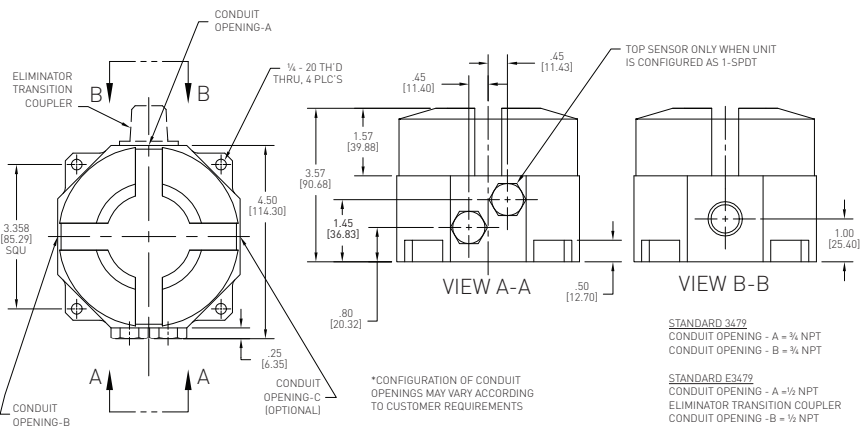
Features

- Magnum limit switches with rhodium contacts recommended for use with low power I/O's for longer contact life.
- Factory pre-wired Magnums provide labor savings for position sensing of smaller valves.
- Aluminum enclosures with ultra-low copper content (0.2% maximum) ensure robust performance in corrosive environments.
- Conduit entries and numbered terminal strip for convenient integration of a solenoid valve.
- Easy back-wiring of 316 Silver Bullet sensors to accommodate position sensing of large valves.
- Triggering bolts included.
- Optional OSHA compliant, adjustable triggering system available in Delrin® or stainless steel.



**OSHA Acceptable
Triggering System**

Model 3479 MOD3 dimensions



Dimensions in inches, where available metric dimension (mm) in parentheses.

Technical specifications

Materials of construction	
Enclosure	Aluminum with powder coat finish
Hermetic Seal	Glass (vacuum)
Temp. range	-40°F to +220°F
Operational Life	600,000 cycles (full rated load)
Sensor Actuation	Ferromagnetic (stainless steel encapsulated)
Sensor Distance	0.100" end sensing
Operating Time	3.0 ms
Repeatability	0.005 inch
Hysteresis	0.030 inch
Available switches	
Magnum, SPDT hermetically sealed switches with tungsten contacts	
Magnum, SPDT hermetically sealed switches with rhodium contacts	

Please consult your sales office for any other requirements

Model 3479 Selection Guide

Base model			
3479	Aluminum enclosure		
	Conduit entry		
	3B	Three ¾" NPT (F)	
	3E	Two ¾" NPT (F) and one ½" NPT (M) eliminator fitting	
	Position switches		
	1M06	One SPDT Magnum switch with tungsten contacts - 10 pt. TS	
	2M06	Two SPDT Magnum switches with tungsten contacts - 10 pt. TS	
	1M12	One SPDT Magnum switch with rhodium contacts - 10 pt. TS	
	2M12	Two SPDT Magnum switches with rhodium contacts - 10 pt. TS	
	3479	3B	2M12

Notes

Conduit entries
 AccuTrak position monitors are available with a choice of conduit entries. Please see the selection guide for standard entries.

Eliminator fitting
 A specialist eliminator fitting is available for the purpose of mounting an aftermarket solenoid valve.

Switches and sensors
 For further information see our switches and sensors data sheet.

Specifying your position monitor
 Specifying a position monitor is a complex process as there are many variables which affect each individual application. To ensure that you receive the best possible combination for your monitoring requirement, please contact your local sales office for advice and guidance from one of our experts.

Hazardous area classification
 Please see our data sheet for further information on the global standards affecting the specification and installation of equipment in hazardous areas.