

230V

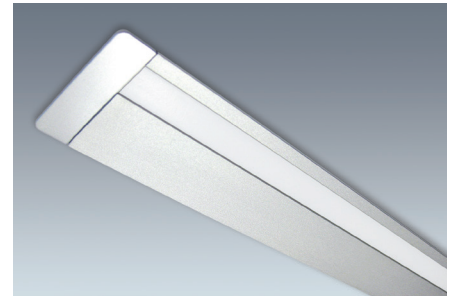
**LED-Einbauleuchte  
230V 50/60Hz**

- mit COB LED
- Aluminiumprofil
- sichtbare Höhe nur 2mm
- geeignet zum Einbau in 19mm Plattenmaterial
- integrierter LED-Treiber
- 2500mm Zuleitung mit Ministecker für Bohrung Ø 8mm
- dimmbar Plug & Play (TRIAC Phasen-/abschnittdimmer)
- Klemmbefestigung
- Schutzklasse II

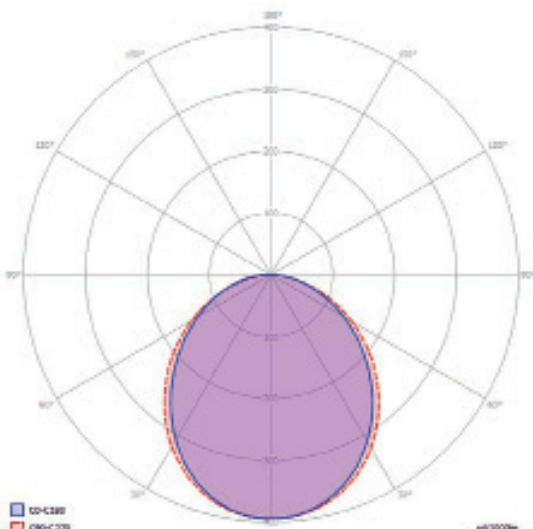
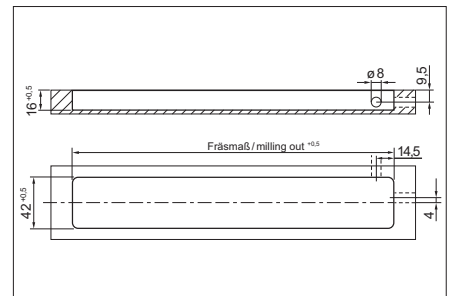
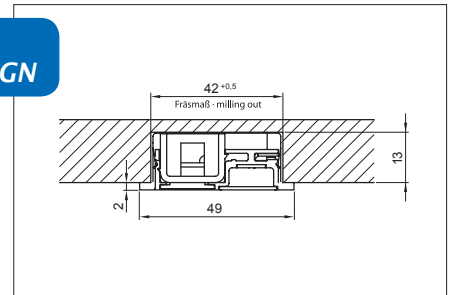


**Recessed LED light  
230V 50/60Hz**

- with COB LED
- aluminium profile
- visible height 2mm only
- suitable for 19mm boards
- integrated LED driver
- 2500mm lead with mini male plug for Ø 8mm
- dimmable Plug & Play (TRIAC leading or trailing edge dimmer)
- push-fit installation
- protection class II



**NEUES DESIGN  
NEW DESIGN**



LD 8010 EF - 16W 4000K 1073lm

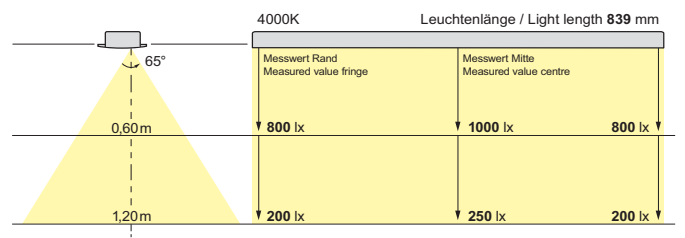




Foto: woehlike-gmbh.de

Art.-Nr. Art. No.	Lichtfarbe Light colour	Spannung Voltage	Leistung Wattage	Länge Length	Fräsmaß Milling out	Gewicht Weight	VK/Stck. Price/pc.
539 343 01	3000K	230V	6,0W	334mm	327mm	306g	
539 343 02	3000K	230V	7,5W	434mm	427mm	352g	
539 343 03	3000K	230V	9,5W	535mm	528mm	420g	
539 343 04	3000K	230V	14,5W	839mm	832mm	571g	
539 343 05	3000K	230V	16,0W	939mm	932mm	610g	
539 344 01	4000K	230V	6,0W	334mm	327mm	306g	
539 344 02	4000K	230V	7,5W	434mm	427mm	352g	
539 344 03	4000K	230V	9,5W	535mm	528mm	420g	
539 344 04	4000K	230V	14,5W	839mm	832mm	571g	
539 344 05	4000K	230V	16,0W	939mm	932mm	610g	

#### Zubehör Accessories

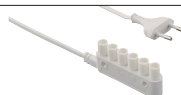
Zuleitung mit Minibuchse | Supply lead with mini female socket  
531 115 01 3000mm



116g

Weitere Längen erhältlich.  
Other lengths available.

Zuleitung mit Verteiler 6-fach | Supply lead with 6-way distributor  
531 116 01 3000mm



141g

Weitere Längen erhältlich.  
Other lengths available.

Einbau-Dimmerschalter DS350 | Built-in dimmer switch DS350  
539 381 01 10-350W



116g