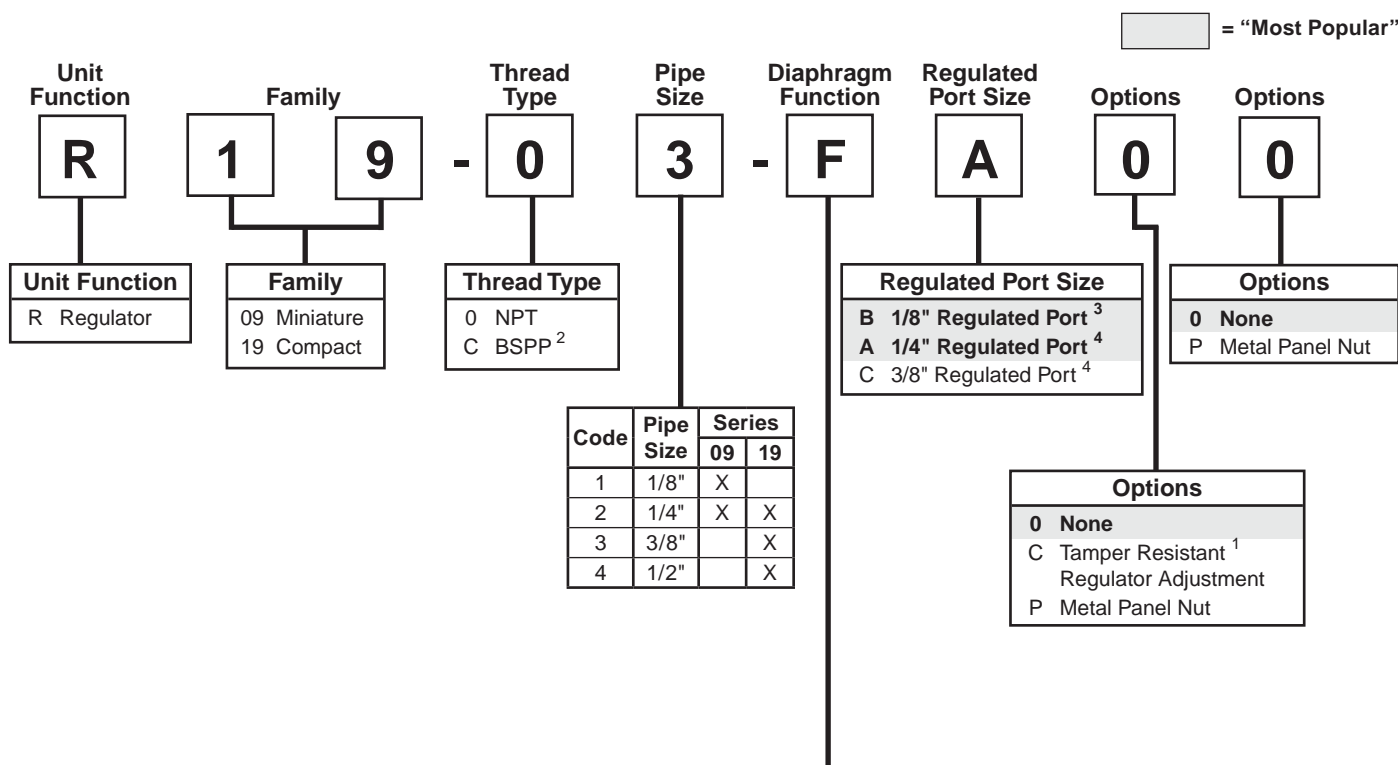


Common-P1 Regulator Numbering System



B

Filters, Regulators, Lubricators

Diaphragm Function	Fluorocarbon	Spring Range			
		0 to 30 PSIG (0 to 2.1 bar)	0 to 60 PSIG (0 to 4.1 bar)	0 to 125 PSIG (0 to 8.6 bar)	0 to 250 PSIG ⁴ (0 to 17.2 bar)
Relieving	No	C	D	F	G
	Yes	J	K	L	M
Non-relieving	No	P	W	R	S
	Yes	V	X	Y	Z

¹ Tamper kit not installed. Kit is shipped loose in carton.

² ISO, R228 (G Series).

³ Not available on R19.

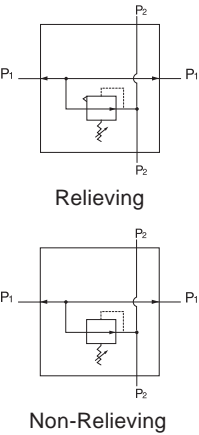
⁴ Not available on R09.

Note: When selecting from the options columns, please enter letters in alphabetical order, for example:

R 1 9 - 0 3 - F A 0 0.

Common-P1 Regulator

R09

 = "Most Popular"

R09-02-FB00

Features

- Balanced Valve Design
- 2 Regulated Ports
- Ease of Maintenance or Serviceability
- Light Weight
- Modern Design and Appearance

Specifications

Flow Capacity*	1/8	27.0 SCFM (12.7 dm ³ /s)
	1/4	28.5 SCFM (13.4 dm ³ /s)
Adjusting Range Pressure		0 to 30 PSIG (0 to 2.1 bar)
		0 to 60 PSIG (0 to 4.1 bar)
		0 to 125 PSIG (0 to 8.6 bar)
Maximum Supply Pressure		300 PSIG (20.7 bar)
Operating Temperature		-4° to 150°F (-20° to 65.5°C)
P1 Port Size (Inlet / Outlet)	NPT / BSPP-G	1/8, 1/4
P2 Regulated Ports (2 ea.)	NPT / BSPT-Rc	1/8
Weight	lb. (kg)	.66 (0.3)

* Inlet pressure 100 PSIG (6.9 bar). Secondary pressure 90 PSIG (6.2 bar).

Materials of Construction

Adjustment Knob	Acetal
Body	Zinc
Body Cap	ABS
Bonnet	33% Glass-filled PBT
Bottom Plug	33% Glass-filled Nylon
Diaphragm Assembly	Brass / Nitrile
Valve Assembly	Brass / Nitrile

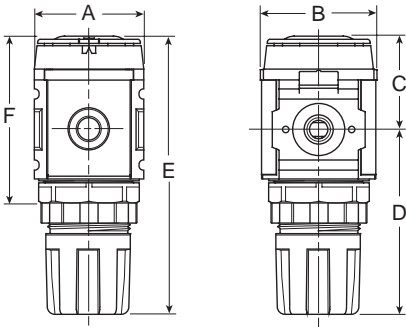
WARNING

Product rupture can cause serious injury.
Do not connect regulator to bottled gas.
Do not exceed maximum primary pressure rating.

CAUTION:

REGULATOR PRESSURE ADJUSTMENT – The working range of knob adjustment is designed to permit outlet pressures within their full range. Pressure adjustment beyond this range is also possible because the knob is not a limiting device. This is a common characteristic of most industrial regulators, and limiting devices may be obtained only by special design.

For best performance, regulated pressure should always be set by increasing the pressure up to the desired setting.



NOTE: 1.25" Dia. (31.8 mm) hole required for panel nut mounting.

Dimensions

Models	Inches (mm)	A	B	C	D	E	F
Standard Common-P1 Unit R09-XX-FB00		1.58 (40)	1.58 (40)	1.34 (34)	2.60 (66)	3.94 (100)	2.40 (61)

= "Most Popular"

Replacement Kits

Diaphragm Assembly –

Non-relieving	GRP-96-726
Relieving	GRP-96-725

Spring, Regulating –

0 to 30 PSIG (0 to 2.1 bar)	GRP-95-111
0 to 60 PSIG (0 to 4.1 bar)	GRP-96-718
0 to 125 PSIG (0 to 8.6 bar)	GRP-96-717

Valve Assembly.....RRP-96-727

Valve Spring.....RRP-96-728

Accessories

Gauge, Pressure, 0 to 60 PSIG (0 to 4.1 bar),

1.25" Dial Face, 1/8 NPT, CBM..... K4513N18060

Gauge, Pressure, 0 to 160 PSIG (0 to 11.0 bar),

1.25" Dial Face, 1/8 NPT, CBM..... K4513N18160

Panel Mount Nut –

Aluminum.....	RPA-96-733
Plastic	RPA-96-734

Tamper Resistant Kit..... RPA-96-735

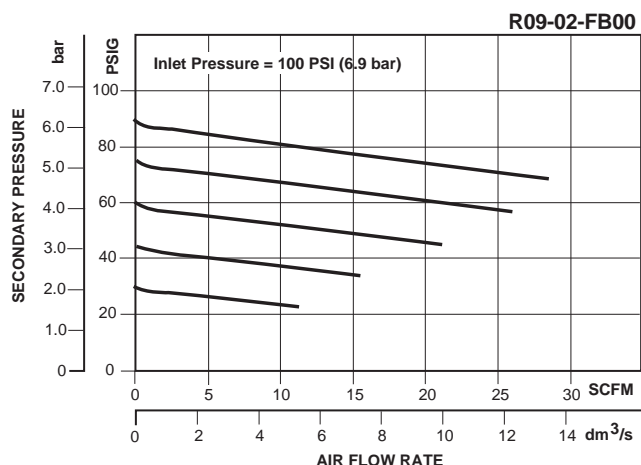
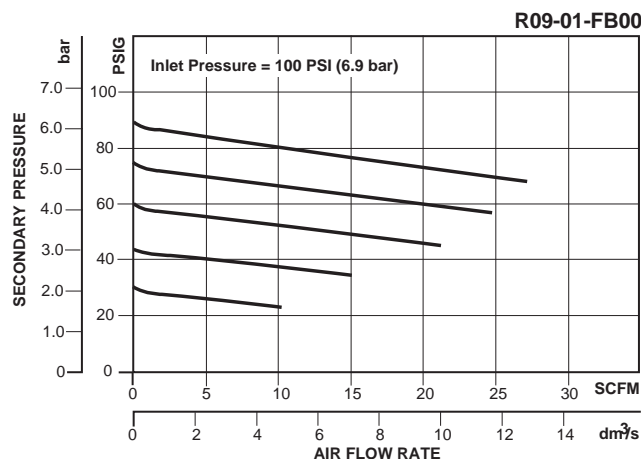
Wall Mounting Bracket –

C-Type	GPA-97-010
L-Type	GRP-96-739
T-Type	GPA-96-737

NOTE: Gauge not included, order separately by accessory number.



Typical Application



Ordering Information

All P2 Regulated Ports are 1/8"

Model Type	P1 Port Size	Without Gauge 0 to 125 PSIG 0 to 8.6 bar)	Without Gauge 0 to 30 PSIG (0 to 2.1 bar)	Without Gauge 0 to 60 PSIG (0 to 4.1 bar)
Relieving	1/8	R09-01-FB00	R09-01-CB00	R09-01-DB00
	1/4	R09-02-FB00	R09-02-CB00	R09-02-DB00
Non-relieving	1/8	R09-01-RB00	R09-01-PB00	R09-01-WB00
	1/4	R09-02-RB00	R09-02-PB00	R09-02-WB00

Options - To order an option supplied with the unit model, add the appropriate coded suffix letter in the designated position of the model number.

Common-P1 Regulator

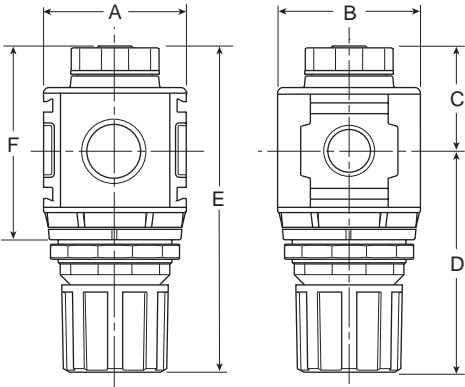
R19

 = “Most Popular”

R19-03-FA00

Features

- Balanced Valve Design
- Spring-loaded Diaphragm
- 4 Adjusting Pressure Ranges Available
- 1/2" NPT / BSPP-G Over-port
- 2 Regulated Ports



NOTE: 2" Dia. (51 mm) hole required for panel nut mounting.

Dimensions

Models	Inches (mm)	A	B	C	D	E	F	G
Standard Common-P1 Unit R19-XX-FA00		2.36 (60)	2.36 (60)	1.74 (44)	3.66 (93)	5.40 (136)	3.10 (78.7)	3.74 (94)

Specifications

Flow Capacity*	3/8	62.0 SCFM (29.2 dm³/s)
Adjusting Range Pressure	0 to 30 PSIG (0 to 2.1 bar) 0 to 60 PSIG (0 to 4.1 bar) 0 to 125 PSIG (0 to 8.6 bar) 0 to 250 PSIG (0 to 17.2 bar)	
Maximum Supply Pressure	300 PSIG (20.7 bar)	
Operating Temperature	-13° to 150°F (-25° to 65.5°C)	
P1 Port Size (Inlet / Outlet)	NPT / BSPP-G	1/4, 3/8, 1/2
P2 Regulated Ports (2 ea.)	NPT / BSPP-G	1/4 or 3/8
Weight	lb. (kg)	1.16 (0.5)

* Inlet pressure 100 PSIG (6.9 bar). Secondary pressure 90 PSIG (6.2 bar).

Materials of Construction

Adjustment Knob	Acetal
Body	Zinc
Body Cap	ABS
Bonnet	33% Glass-filled Nylon
Bottom Plug	33% Glass-filled Nylon
Diaphragm Assembly	Nitrile / Zinc
Panel Nut	Acetal
Seals	Nitrile
Springs	Main Regulating Valve: Steel Stainless Steel
Valve Assembly	Brass / Nitrile

⚠ WARNING

Product rupture can cause serious injury.
Do not connect regulator to bottled gas.
Do not exceed maximum primary pressure rating.

CAUTION:

REGULATOR PRESSURE ADJUSTMENT – The working range of knob adjustment is designed to permit outlet pressures within their full range. Pressure adjustment beyond this range is also possible because the knob is not a limiting device. This is a common characteristic of most industrial regulators, and limiting devices may be obtained only by special design.

For best performance, regulated pressure should always be set by increasing the pressure up to the desired setting.

= "Most Popular"

Replacement Kits

Diaphragm Assembly –

Non-relieving	RRP-96-761
Relieving	RRP-96-760

Spring, Regulating–

0 to 30 PSIG (0 to 2.1 bar)	RRP-96-659
0 to 60 PSIG (0 to 4.1 bar)	RRP-96-660
0 to 125 PSIG (0 to 8.6 bar)	RRP-96-661
0 to 250 PSIG (0 to 17.2 bar)	RRP-96-662

Valve Assembly	RRP-96-658
----------------------	------------

Accessories

Gauge, Pressure, 0 to 30 PSIG (0 to 2.1 bar), 1-1/2" Dial Face, 1/4 NPT, CBM	K4515N14030
---	-------------

Gauge, Pressure, 0 to 60 PSIG (0 to 4.1 bar), 1-1/2" Dial Face, 1/4 NPT, CBM	K4515N14060
---	-------------

Gauge, Pressure, 0 to 160 PSIG (0 to 11.0 bar), 1-1/2" Dial Face, 1/4 NPT, CBM	K4515N14160
---	-------------

Gauge, Pressure, 0 to 300 PSIG (0 to 20.7 bar), 1-1/2" Dial Face, 1/4 NPT, CBM	K4515N14300
---	-------------

Panel Mount Nut –

Aluminum	RRP-96-673
Plastic	RRP-96-675

Tamper Resistant Kit	RRP-96-671
----------------------------	------------

Wall Mounting Bracket –

L-Type	GPA-96-606
T-Type	GPA-96-603

NOTE: Gauge not included, order separately by accessory number.



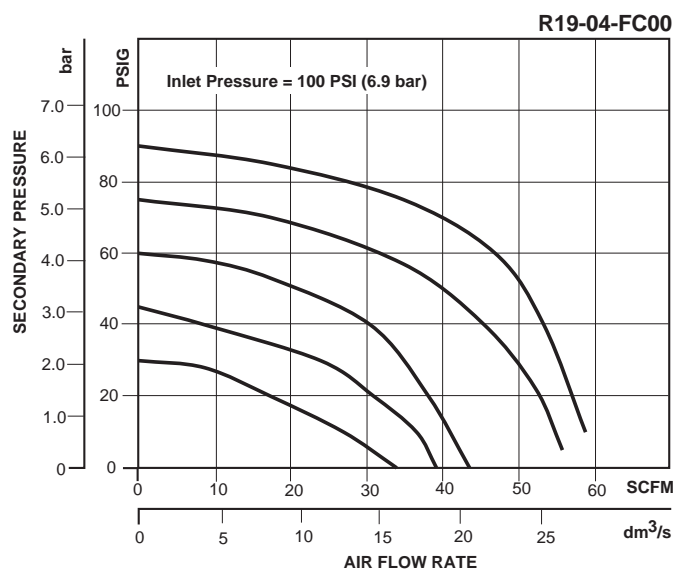
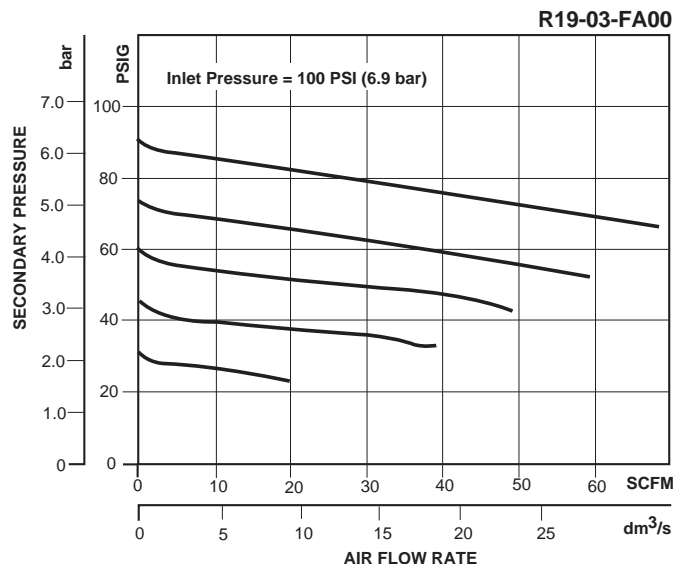
Typical Application

Ordering Information

All units shown with 1/4" regulated ports. For 3/8" ports, place letter C in position 7.

Model Type	P1 Port Size	5-125 PSIG (0.4 to 8.6 bar)	10-250 PSIG (0.7 to 7.2 bar)	3-60 PSIG (0.2 to 4.1 bar)
Relieving	1/4	R19-02-FA00	R19-02-GA00	R19-02-DA00
	3/8	R19-03-FA00	R19-03-GA00	R19-03-DA00
	1/2	R19-04-FA00	R19-04-GA00	R19-04-DA00
Non-relieving	1/4	R19-02-RA00	R19-02-SA00	R19-02-WA00
	3/8	R19-03-RA00	R19-03-SA00	R19-03-WA00
	1/2	R19-04-RA00	R19-04-SA00	R19-04-WA00

Options - To order an option supplied with the unit model, add the appropriate coded suffix letter in the designated position of the model number.



B

Filters, Regulators, Lubricators