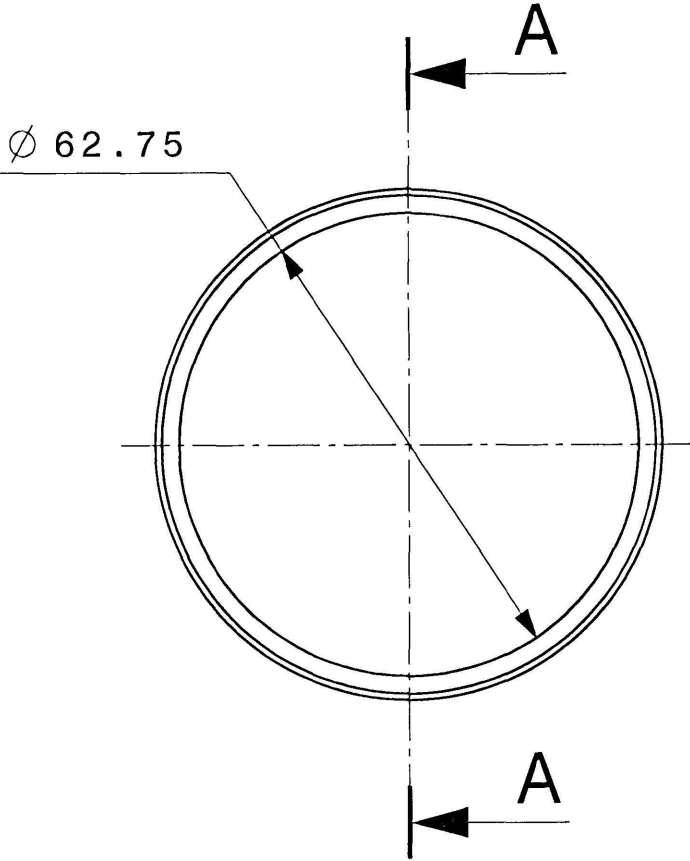
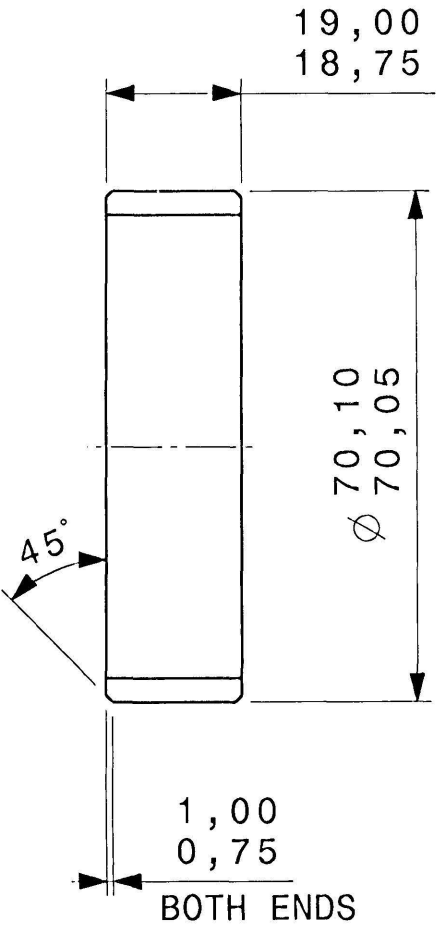


- 1 BAG AND TAG IDENTIFY. TAG TO RECORD IDENTIFICATION DETAILS AS PER APPH SPEC. KLA861 SECTION 2.
- 2 ITEM MAY BE PURCHASED FROM TRELLEBORG SEALING SOLUTIONS.



SECTION A-A

SECONDARY PART
IN ACCORDANCE WITH EC SPECIFICATION QAE-04-06

apph

MODIFICATION HISTORY

ISSUE No	MOD No & DATE	DETAILS	CHK'D	APPR'D
1	ERN328 16.4.08	FIRST ISSUE		
2	DA13538 24.3.10	DIM Ø62.75 WAS Ø63,50/63,45 (E5).	GPC	GPC BH

MATERIAL & SPECIFICATION(S) (FINAL CONDITION)

LUYTEX C380

APPROVALS	DRAWN	S.ELLIS
	CHECKED	C.MANVELL
	SENIOR DESIGN ENG.	G.COMPLIN
	STRESS	B.HUTCHISON
	FINAL APPROVAL	<i>[Signature]</i>

DESCRIPTION

BEARING

PART No
AIR143114

PROJECT	EC175 - Z15
SHEET No	1
TOTAL SHEETS	1

GENERAL REQUIREMENTS	
A3	DO NOT SCALE
BS8888	
FIRST ANGLE PROJECTION	
ALL DIMENSIONS IN MILLIMETRES	
ALL DIMENSIONS ARE AFTER TREATMENT	
UNLESS OTHERWISE STATED ALL BURRS AND SHARP EDGES MUST BE REMOVED USING 0,25mm MAX RADIUS OR CHAMFER.	
SURFACE FINISH UNLESS OTHERWISE STATED	
✓ = um (Ra) MAX (ANY METHOD)	
✓ = 1,6 um (Ra) MAX (MACHINED)	
✓ = um (Ra) MAX (NO MTL REMOVAL)	
GENERAL TOLERANCES:-	
LINEAR ±0,25.	
ANGULAR ±1°.	
CO-AXIAL DIAMETERS CONCENTRIC TO 0,1 TOTAL INDICATOR READING.	
POSITIONAL TOLERANCE OF HOLES ON PITCH CIRCLES 0,1 DIAMETER.	
FOR ALT. SPECIFICATIONS / PARTS SEE MDO1 1000 (LATEST ISSUE)	
THIS DRAWING IS CONFIDENTIAL AND IS SUPPLIED ON THE EXPRESS CONDITION THAT IT SHALL NOT BE LENT OR COPIED OR DISCLOSED TO ANY OTHER PERSON WITHOUT THE WRITTEN CONSENT OF APPH Ltd. ©	
TEST	EST. WEIGHT
	0.018 Kg