



THIS DRAWING IS THE PROPERTY OF QUALITROL COMPANY, LLC AND IS LOANED ONLY ON THE CONDITION THAT IT BE USED FOR THE PROJECT AND NOT BE REPRODUCED, COPIED OR OTHERWISE DISPOSED OF, AND IS NOT TO BE USED IN WHOLE OR IN PART FOR FURNISHING INFORMATION RELATIVE TO THE MAKING OF DRAWINGS, PARTS OR APPARATUS OR FOR ANY OTHER PURPOSES, EXCEPT BY WRITTEN ORDER FROM QUALITROL COMPANY, LLC.

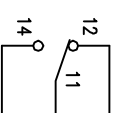
# NOTICE

MODEL NO.

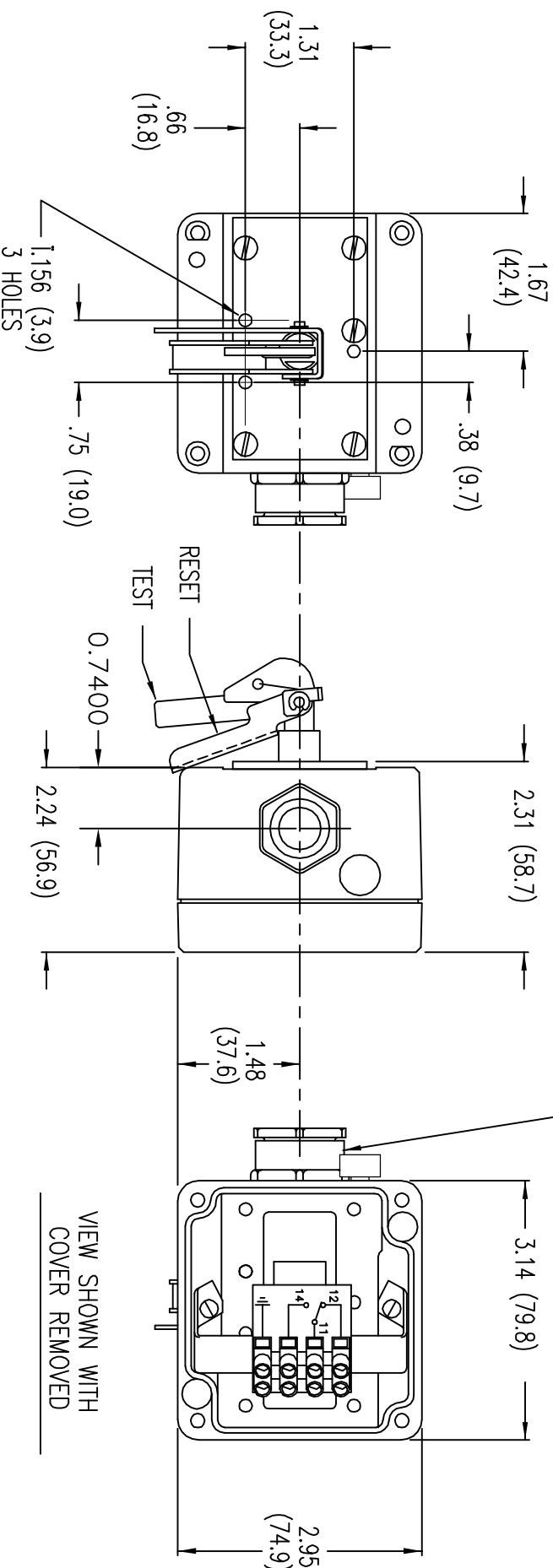
SWT-679-1

## NOTES:

1. WHEN ALARM SWITCH IS MOUNTED ON A PRESSURE RELIEF DEVICE, 11 AND 12 ARE CLOSED, 11 AND 14 ARE OPEN.
2. WHEN DEVICE OPERATES, 11 AND 12 OPEN, AND 11 AND 14 CLOSE.
3. 11 AND 12 WILL REMAIN OPEN, 11 AND 14 WILL REMAIN CLOSED UNTIL SWITCH RESET LEVER IS MANUALLY DEPRESSED.
4. SWITCH RATING: 10 A, 125 VDC
5. FOR MAXIMUM PRESSURE RELIEF DEVICE MOUNTING BOLT CLEARANCE, INSTALL SWITCH AFTER INSTALLING DEVICE.
6. EACH SWITCH ASSEMBLY IS SUPPLIED WITH:  
THREE SEALING SCREWS, NO. 6-32 UNC-2A X .50 (12.7) LONG.
7. INSULATION CLASS: 2,000 VAC, 50/60 Hz, 1 MIN.
8. ENCLOSURE IS FREE BREATHING AND CONFORMS TO THE REQUIREMENTS OF IP65. IT MUST BE INSTALLED AT THE 3 O'CLOCK POSITION (WITH THE CABLE ENTRY TOWARDS THE GROUND) ON VERTICALLY MOUNTED PRD'S.



WIRING DIAGRAM (4002)



DIMENSIONS ARE IN INCHES (mm)

VIEW SHOWN WITH  
COVER REMOVED

—	1/21/14	REPLACE ENC-021-1 W/ ENC-023-3, ADD WFT-013-1	32130
—	7-31-12	ADDED WIRING DIAGRAM REFERENCE NO.	30422
—	1-8-01	ADD ADP-152-1 & CHANGE CALLOUT	21808
LET	DATE	ALTERATION	C.N.

**QUALITROL®**

DIMENSIONS AND TOLERANCES IN  
ACCORDANCE WITH ASME Y14.5M-1994

TITLE: ALARM SWITCH-DIRECT WIRING,

1 POLE HIGH DC

MODEL NO. SWT-679-1