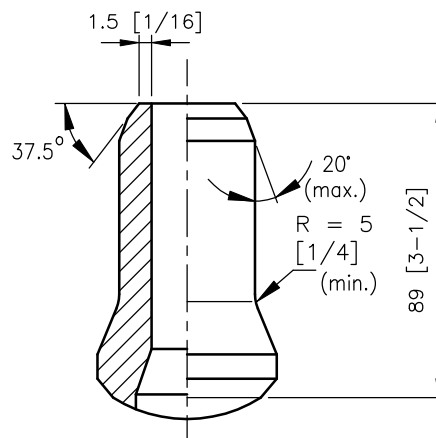
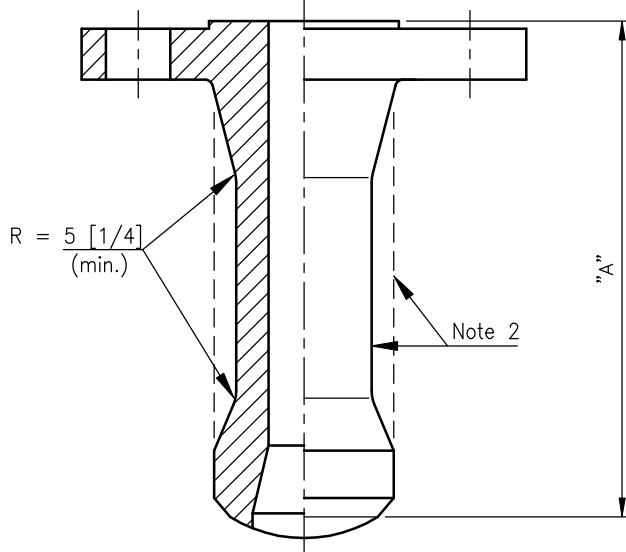
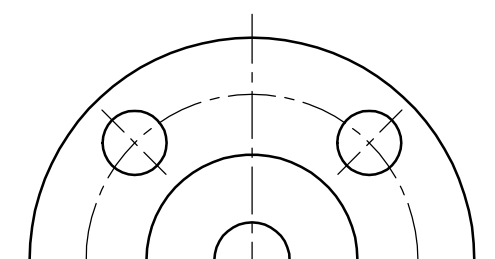


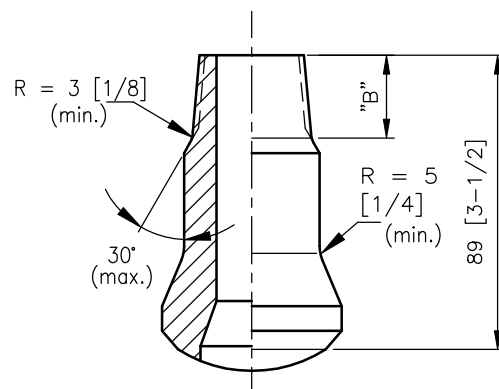
**PLAIN-END OUTLET**



**BUTT WELD-END OUTLET**



**FLANGED-END OUTLET**



**THREADED-END OUTLET**

Nominal size		"A" (Face of flange to crotch) Class					"B" min.
DN	NPS	150	300	600	1500	2500	mm [in]
15	1/2	150 [6]	150 [6]	150 [6]	150 [6]	150 [6]	25 [1]
20	3/4						
25	1						
40	1-1/2						30 [1-1/8]
50	2					165 [6-1/2]	

**Notes:**

- Dimensions in millimetres [inches].
- Shape only indicative, other shapes are also acceptable.

D	Mar. '12	PTE/EMMI		PTE/EMMI		US Customary units added
C	Nov. '06	GSEMH/1		GSEMH/1		Dimensions added
B	August '05	GSEM/1		GSEM/1		Reaffirmed
A	July '95	MFE0/514		MFE0/5		Converted to CAD updated
ISSUE	DATE	Ref.Ind. Designer	Sign/init.	Ref.Ind. Custodian	Sign/init.	DESCRIPTION
APPROVED BY						

This document is restricted. Neither the whole nor any part of this document may be disclosed to any third party without the prior written consent of Shell Global Solutions International B.V., The Hague, The Netherlands. The copyright of this document is vested in this company. All rights reserved. Neither the whole nor any part of this document may be reproduced, stored in any retrieval system or transmitted in any form or by any means (electronic, mechanical, reprographic, recording or otherwise) without the prior written consent of the copyright owner.



STANDARD DRAWING

BRANCH FITTINGS

SHLL GLOBAL SOLUTIONS INTERNATIONAL B.V. This document has been supplied under license by Shell to: PUSBBRNEI

Sheet No. of  
DRG No. S38.090 - D