

## Models B/D

8-Watt Solenoid Valve Coil

**PA, PE**

Molding Materials

**DIN (NEMA 4)**

Electrical Connection

**DC +10% -5%**

Nominal Voltage

**AC +10% -15%**

Tolerances

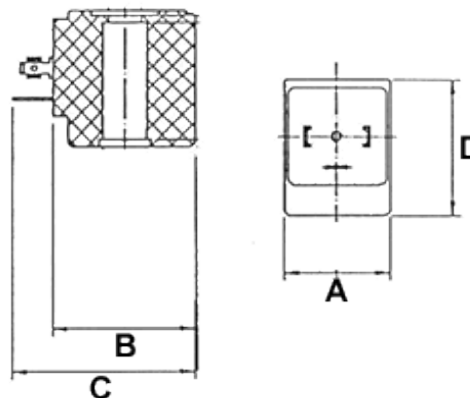


### Coil Dimensions

Coil Width (A):	1 3/16"
Coil Length (B):	1 21/32"
Coil Length (C):	2 1/8"
Coil Height (D):	1 17/32"

### Electrical Connection

Inrush VA (AC only):	25
Holding VA (AC only):	14.0
Electrical Connection:	DIN (NEMA 4)



**Note:** Additional voltages are available upon request.

## COIL SPECIFICATIONS

**Nominal Voltage:** DC +10% -5%

**Tolerances:** AC +10% -15%

Code	Power (Watts)	Voltages	ED	Approvals
B1	8	110-120V/50-60Hz	100%	CE, UL, CSA
B2	11	24V DC	100%	CE, UL, CSA
B3	8	24V/60Hz	100%	CE, UL, CSA
B4	11	12V DC	100%	CE, UL, CSA
B5	8	220-240V/50-60Hz	100%	CE, UL, CSA
D2	8	24V DC	100%	CE
D4	8	12V DC	100%	CE

## MOLDING MATERIALS

Code	Material	Description	Class	Temperature
B	PE	Black polyethylene	H	360°F
D	PA	Black polyamide	F	310°F

For more information about our solenoid valve coils, visit  
<http://www.granzow.com/valves/coils/>