



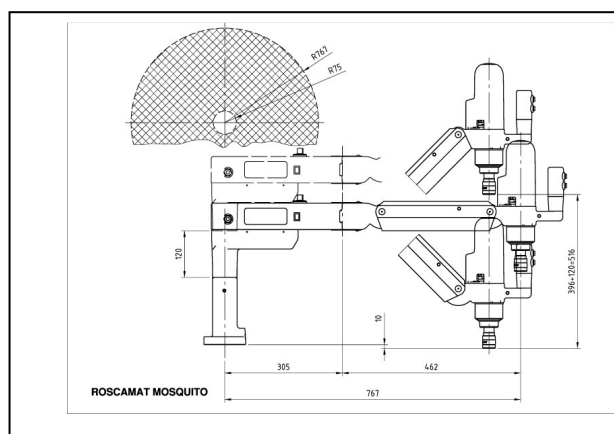
The machine itself consists of a radial arm joint to a tilting arm balanced by means of a pneumatic spring. The head member and the electric motor find themselves at the end of the tilting arm and is adapt to always move at right angle with respect to its working area.

The High Frequency is regulated by means a variator board located in the “electronic box casing”. The turning motor speed is adjustable by means of the buttons being located over the “radial arm”. Also the optional tool lubrication system is available. The speed can be thus adapted to every thread type.

The tapholders are fixed to the motor by means of a quick change, and taps fixes directly to the tapholders. With this simple method, we reduce the time of change of tooling with the consequent save of time, and increase of the productivity in all threading operations.

The **MOSQUITO** can be supplied with:
two motors, each one with a different speed but the same power of 500 W or **one motor with both speeds**.

Motor	Speed (rpm)	Max. Torque (Nm)	Ø Coupl..	Max. Thread Aluminium	Max. Thread Steel <100 Kg
AF220301	300	36	Ø19	M16	M14
AF220201	600	17	Ø19	M12	M10
AF220101	300 / 600	36	Ø19	M16	M14

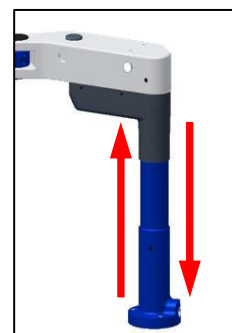
**WORKING AREA:**

Radius: 767 mm

High: 396 + 120 mm

TAPPING OF HIGH PIECES:

For working in high positions, lift the machine till reaching the top

**ROSCAMAT-MOSQUITO VH**

The **MOSQUITO** can be supplied with an articulated headmember of easy handling that can be set in four different positions 90° apart.

- 1-Handle
- 2-Milled nut

**AUTOMATIC LUBRICATION (Optional):**

For working in high positions, lift the machine till reaching the top

WORKING AREA:

Radius: 885 mm

High: 396 + 120 mm

**ROSCAMAT**

P.I. Pla dels Vinyats, B
08250 St. Joan de Vilatorrada
Barcelona – Spain
Tel: +34 93 8764359
Fax: +34 93 8767738
E-mail: roscamat@roscamat.com
Website : www.roscamat.com