



# BALL VALVES FOR REGULATION PURPOSES

## Fig. 465 KC PE

### GENERAL FEATURES:

This ball sector control valve is specially designed for control applications of different media such as liquids, pulps and steam.

- Reduced bore
- V-port ball, gives an excellent control characteristic intermediate between linear and equal percentage
- Easy maintenance without special tools

### MATERIAL:

Body in stainless steel

V - Ball in stainless steel hard chromed

Stellited metal seat

Packing in graphite

Gaskets in carbon fibre

### CONNECTION:

For mounting between flanges drilled according to DIN - PN 16

### PRESSURE:

40 bar for DN 25 ~ DN 40

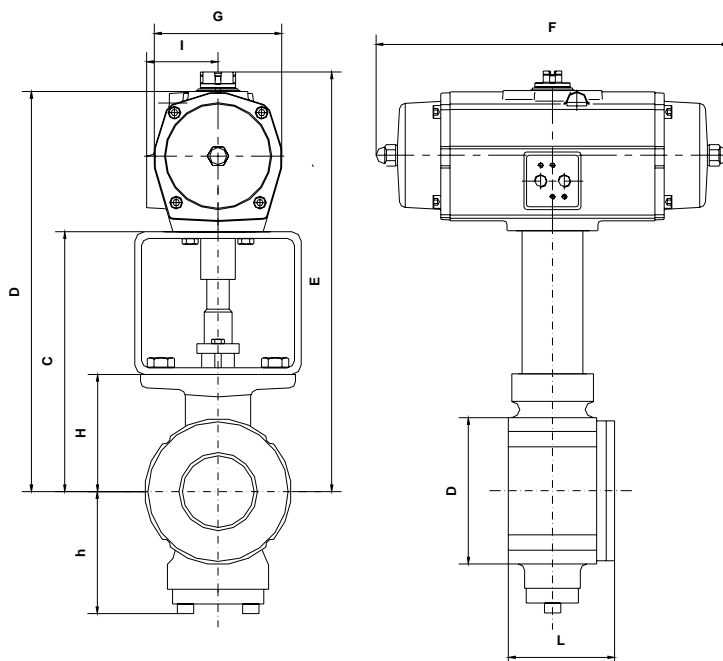
25 bar for DN 50 ~ DN 80

16 bar for DN 100 ~ DN 200

Closing differential pressure: 16 bar

### OPERATION:

Pneumatic actuator type ES/PE, spring return, normally closed, calculated for a pressure supply of 5 bar, with a safety factor of 30% and a differential pressure of 16 bar



### DIMENSIONS: (in mm)

DN	ES/PE	L	Ø D	h	H	C	D	E	I	G	F	Kg.
25	65	50	65	58	58	178	283	303	58,0	98	249	5,9
40	100	60	90	79	70	190	308	328	63,0	108	267	9,0
50	200	75	105	83	74	214	357	377	73,0	128	360	14,8
80	200	100	140	97	103	253	396	416	73,0	128	360	19,5
100	350	115	160	126	118	268	449	469	95,0	173	387	31,3
150	950	160	216	135	148	328	587	617	126,0	231	517	69,0
200	1.600	200	273	194	192	392	689	719	142,0	265	637	109,8

# SODECO

[www.sodeco-valves.com](http://www.sodeco-valves.com)  
[www.sodecovalves.eu](http://www.sodecovalves.eu)  
[www.inoxline.com](http://www.inoxline.com)

465KCPE