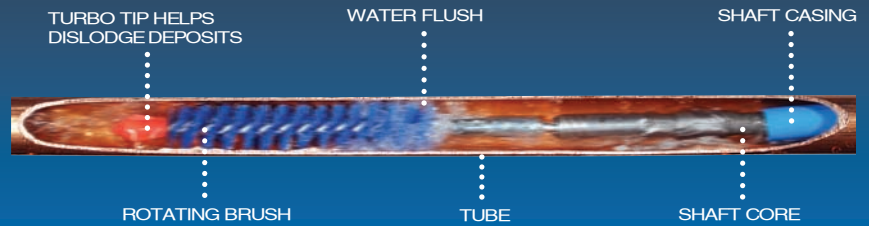


The Newest Generation Of The Original Tube Cleaner

Discover the quick-cleaning power of advanced rotary tube-cleaning technology.

RAM-4 – The Original Rotary Tube Cleaner

With a Goodway tube cleaner in your arsenal, you're backed by 33 years of proven tube-cleaning performance. The fourth generation RAM-4 includes an array of interchangeable cleaning tools designed for a variety of situations. It's never been this simple to restore tubes to optimal performance. The cleaning tool safely and effectively scours debris away without damaging tube walls. A casing around the shaft feeds water to the rotating tool, flushing out deposits as they are loosened. The RAM-4 is one of the most effective weapons you can use to optimize your system's power requirements.



FEATURES

- > Stainless steel construction
- > Interchangeable cleaning tools
- > Integrated dolly
- > Simultaneous water flush
- > Foot switch activation

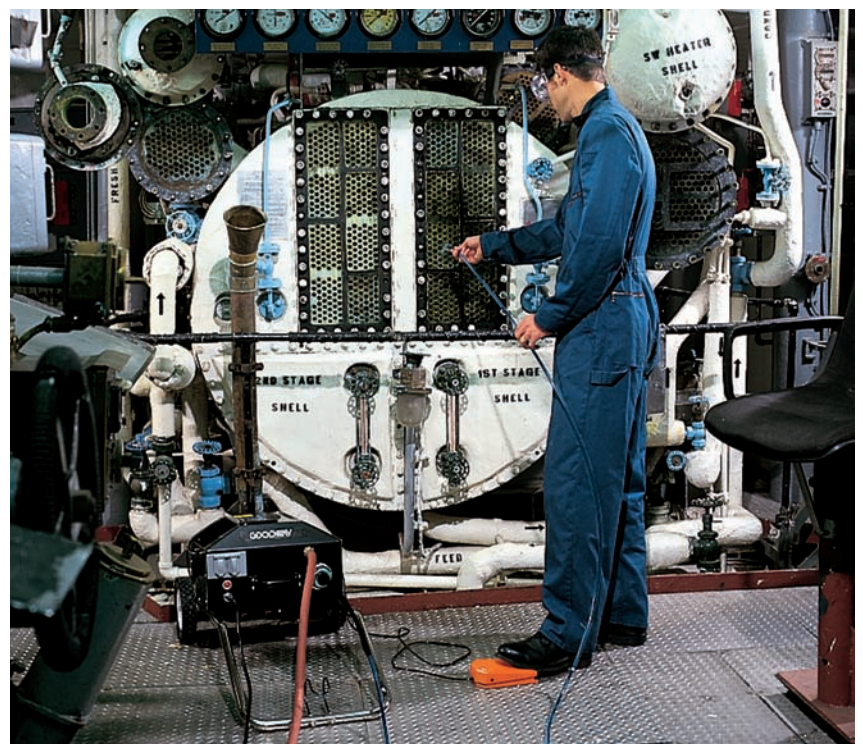
RAM-4-60-R

Tube Cleaner, including mobile dolly, tool storage box and two-direction foot switch

RAM-4-60

Tube Cleaner, including mobile dolly, tool storage box and single-direction foot switch

Note: Call for shafts and accessories.



+1.203.359.4708

WWW.GOODWAY.COM



Specifications	RAM-4
Motor Power	0.5 HP
Input Power	Standard: 9 amps, 115 V, 60 Hz AC Optional: 9 amps, 115 V, 50 Hz; 4.5 amps, 230 V, 60 Hz; or 4.5 amps, 230 V, 50 Hz
Power Supply Cord	21', 14-3 GFCI
Flexible Shaft Speed	862.5 rpm
Water Requirements	Minimum 30 PSI at 2 GPM
Dimensions	37" high x 20" wide x 17" deep
Weight	49 lbs net dry



Contractor Dolly:

This durable, ergonomic dolly with storage rack and accessory bin is ideal for off-site job locations.

RAM-DOLLY-C

Heavy-Duty Contractor Dolly (upgrade)



RAM-DOLLY-C

Fouling Factors & Chiller Performance

In a 400-ton chiller, operating 500 hrs/yr @ 50% average load with power cost \$0.1 per kWhr, the fouling factors affect performance as follows:

Fouling Factor	% of Efficiency	Money Wasted	% of Electrical Power Required Above Clean Tube Condition
0.0005	100%	\$0	0%
0.0015	94%	\$6,546	11%
0.0025	80%	\$13,093	22%
0.0036	58%	\$19,639	33%
0.0045	36%	\$27,588	44%

Chiller Tube Cleaning System:

This is our most commonly used package for cleaning Trane, Carrier, York, McQuay and other units. It has everything you need for cleaner, more efficient chiller performance.

R4R-25Q

Chiller Tube Cleaning System with quick connect fittings:

- 1 – RAM-4-60-R Ream-A-Matic Tube Cleaner
- 2 – GTC-703Q-25 Flexible Shafts
- 1 – 9401 Chiller Bib Bag
- 1 – 9402 Chiller Bib Frame
- 25 – GTC-211Q Blue Nylon Brushes (specify size)
- 15 – SGBQ Spin-Grit Brushes (specify size)
- 2 – GTC-205Q or GTC-206Q Buffing Tools (specify size)
- 8 – Replacement Blades for Buffing Tools (not shown)
- 1 – REP-703Q-KIT Repair Kit for GTC-703Q Flexible Shafts

CHILLER
BIB



REPAIR KIT



BLUE NYLON BRUSH



SPIN GRIT BRUSH



BUFFING TOOL

R4R-25

Same as R4R-25Q except with threaded fittings

Note: Call for complete item descriptions.

FOR MORE INFORMATION CONTACT

Goodway Technologies Corporation
420 West Avenue, Stamford, CT 06902-6384 U.S.A.
Tel: +1-203-359-4708 • Fax: +1-203-359-9601
E-Mail: goodway@goodway.com
www.goodway.com