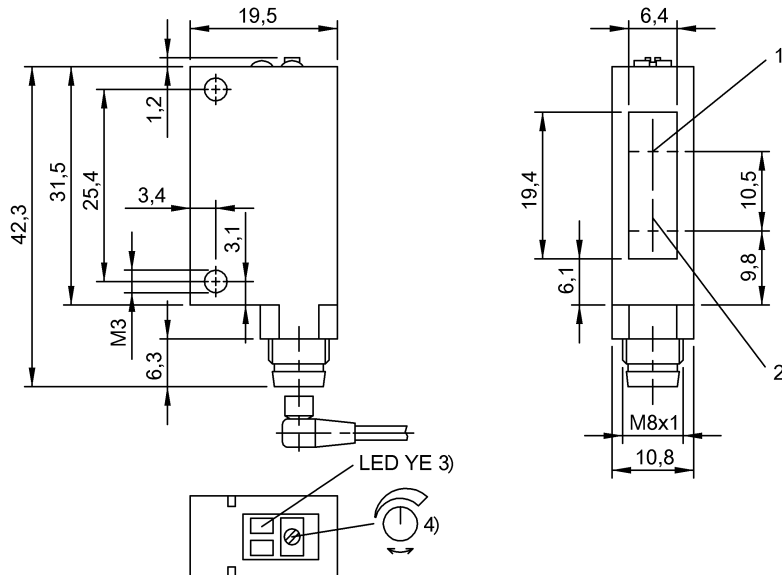
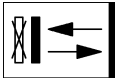


BOS 5K-PS-RH12-S75
Ordering code: BOS012A

Diffuse sensor
 Series 5K
 Working Range: 40...200 mm

PNP (1x), NO (pin 4)
 LED, red light
 DC, direct current

BALLUFF
sensors worldwide



1) Optical axis receiver, 2) Optical axis emitter, 3) Output function, 4) Sn

Characteristic data

Operating voltage	10...30 V DC
Connection	Connector, M8x1-S75
Switching freq. f max.	500 Hz
Indicator	Output function - LED YE
Setting	Switching distance (Sn)
Adjuster	Potentiometer 270° (1x)/Potentiometer 6-turn (1x)
Short-circuit protected	yes
Protected against polarity reversal	yes
Enclosure Type per IEC 60529	IP67

Optical data

Principle of optical operation	Light scanner, triangulation
Switching function, optical	NO: light-on
Light type	LED, red light
Wavelength	660 nm
Ambient light max.	5,000 Lux
Optical special feature	Background suppression

Electrical data

Rated operating voltage U _e DC	24 V
Effective operating current I _e	100 mA
Ripple max. (% of U _e)	8
Switching output	PNP (1x)
Switching function	NO (pin 4)
Turn-off delay toff max.	1 ms

Turn-on delay ton max.	1 ms
No-load current max. I _o at U _e	30 mA
Voltage drop U _d max. (at I _e)	2 V

Mechanical data

Eff. switching distance S _r	200 mm
Capture range S _d	40...200 mm
Range S _n	S _n = 200 mm, adjustable
Minimum operating distance	40 mm
Connector type	M8x1-S75
Sensing surface material	PC
Housing material	PC, PBT
Mounting type	Screw M3
Design	Block, 90° connection
Ambient temperature	-25...55 °C

Basic data

Basic standard IEC 60947-5-2
 The sensor is functional again after the overload has been eliminated.
 Reference object (target): Gray card, 100 x 100 90 % remission, axial approach.
 Only for NFPA 79 applications (machines with a supply voltage of maximum 600 volts). Device shall be connected only by using any R/C (CYJV2) cord, having suitable ratings.
 For additional information, refer to user's guide.
 Order accessories separately.

BOS 5K-PS-RH12-S75
Ordering code: BOS012A

Diffuse sensor
Series 5K
Working Range: 40...200 mm

PNP (1x), NO (pin 4)
LED, red light
DC, direct current

BALLUFF
sensors worldwide

